

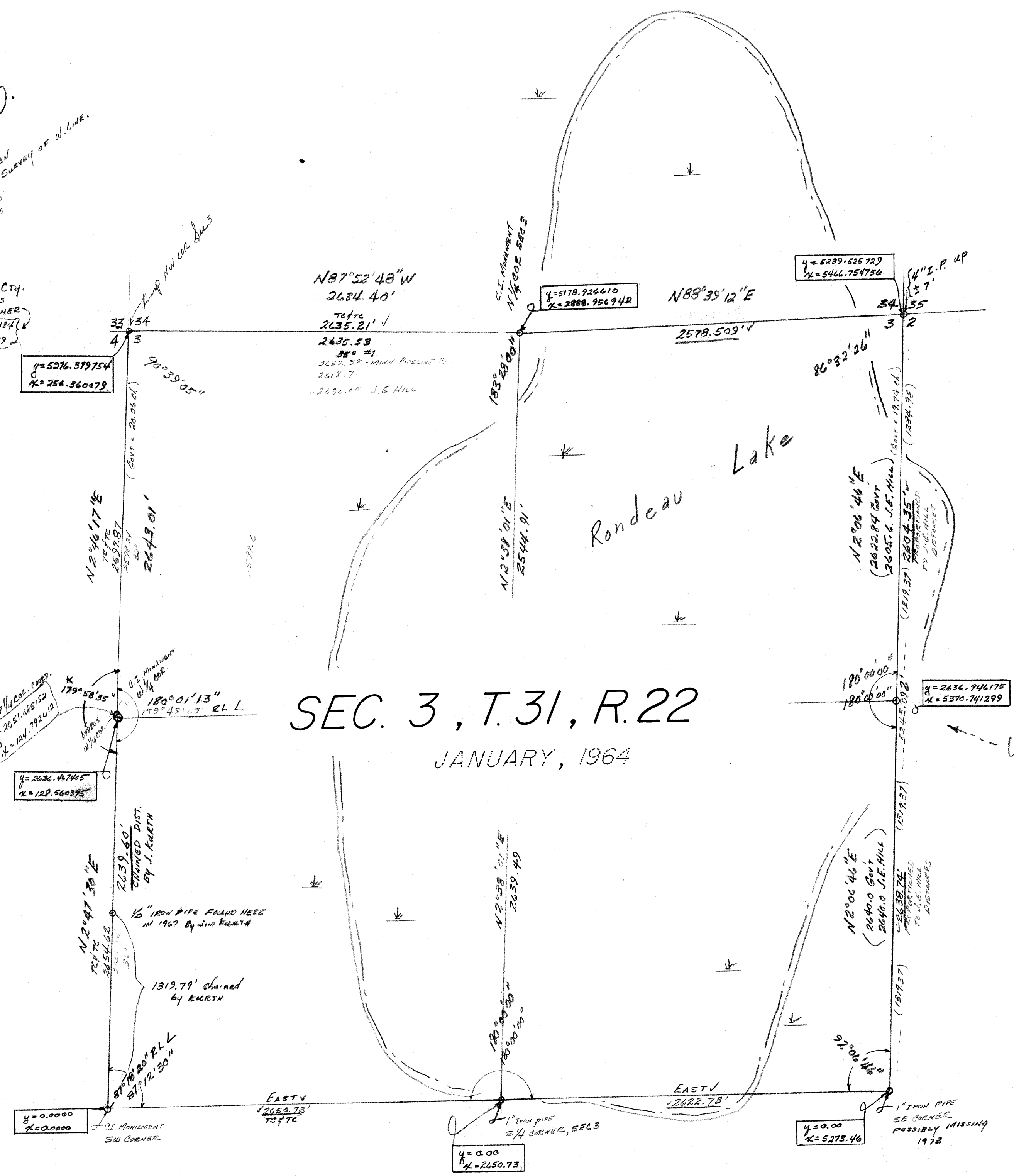
SEC 3, T 31, R 22

I-15

KURTZ COORDINATES  
 F.M. N.W. COR. SEC. 3  
 Y = 5276.37754  
 X = 254.26079

TOUGHRIDGE BETWEEN  
 CITY & KURTZ SURVEY OF W. LINE  
 N/S = 0.1825  
 E/W = 0.1825

ACCORDING TO CITY  
 COORDINATES  
 OF TOWN CORNER  
 Y = 5276.37754  
 X = 254.26079



SEC. 3, T.31, R.22  
 JANUARY, 1964

Note:  
 See I-159  
 for Theo. E 1/4 Cor.

A COMPILATION OF A SURVEY OF SEC 3 BY JAMES KURTZ, 1967;  
 RANDOM LINES RUN BY COUNTY SURVEYOR OF THE SOUTH AND WEST LINES 1964  
 AND BEODIMETER DISTANCES OF EAST AND NORTH LINES 1967.  
 TO SET THE EAST 1/4 CORNER