

Did not close
 George Watch Lake
 SEC. 16, T.31, R.22
 FEBRUARY, 1964

Marshan Lake

Centerville Lake

SEC. 19, T.31, R.22
 MARCH, 1966

SEC. 20, T.31, R.22
 DECEMBER 1967

SEC. 21, T.31, R.22
 JANUARY, 1968

Rice Lake

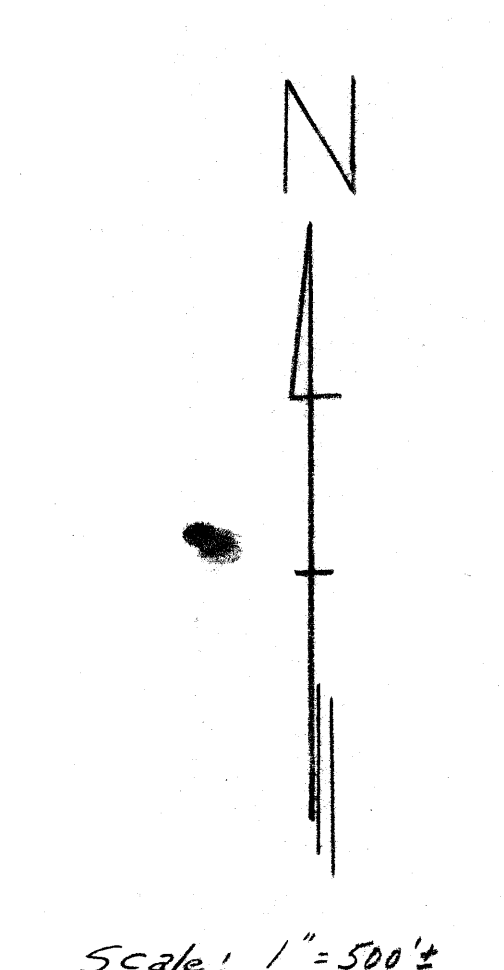
Reshanau Lake

Wards Lake

SURVEYS FOR
 REPLACEMENT OF CORNERS
 IN SECTIONS 19, 20, 21, 28, 29
 T.31, R.22

SEC. 29, T.31, R.22
 NOVEMBER 1967

SEC. 28, T.31, R.22
 JANUARY, 1968



SHEET 142