

# ABERDEEN OAKS

KNOWN ALL MEN BY THESE PRESENTS: That James Lund Construction, Inc., a Minnesota corporation and Monarch Custom Homes, Inc., a Minnesota corporation, owners of the following described property situated in the County of Anoka, State of Minnesota, to wit:

Tracts C and D, Registered Land Survey No. 16

have caused the same to be surveyed and platted as ABERDEEN OAKS and do hereby donate and dedicate to the public for public use forever the drive, the street, and the easements for drainage and utility purposes only.

In witness whereof said James Lund Construction, Inc., a Minnesota corporation, has caused these presents to be signed by its proper officer this 25<sup>th</sup> day of MARCH, 1993.

In witness whereof said Monarch Custom Homes, Inc., a Minnesota corporation, has caused these presents to be signed by its proper officer this 29<sup>th</sup> day of MARCH, 1993.

JAMES LUND CONSTRUCTION, INC.

MONARCH CUSTOM HOMES, INC.

*James R. Lund*  
James R. Lund, President

*Jeffrey S. Thomas*  
Jeffrey S. Thomas, PRESIDENT

STATE OF MINNESOTA  
COUNTY OF ANOKA

The foregoing instrument was acknowledged before me this 25<sup>th</sup> day of March, 1993, by James R. Lund, as President of James Lund Construction, Inc., a Minnesota corporation, on behalf of the corporation.

*Joyce C. Holm*  
JOYCE C. HOLM  
NOTARY PUBLIC - MINNESOTA  
HENNEPIN COUNTY  
MY COMMISSION EXPIRES 2-2-97

*Joyce C. Holm*  
Notary Public, Hennepin County, Minnesota  
My Commission Expires 2-2-97

STATE OF MINNESOTA  
COUNTY OF HENNEPIN

The foregoing instrument was acknowledged before me this 29<sup>th</sup> day of March, 1993, by Jeffrey S. Thomas, as President of Monarch Custom Homes, Inc., a Minnesota corporation, on behalf of the corporation.

*Donell R. Dotjic*  
DONELL R. DOTJIC  
NOTARY PUBLIC - MINNESOTA  
ANOKA COUNTY  
MY COMMISSION EXPIRES 11-19-98

*Donell R. Dotjic*  
Notary Public, Anoka County, Minnesota  
My Commission Expires 11-19-98

I hereby certify that I have surveyed and platted the property described on this plat as ABERDEEN OAKS; that this plat is a correct representation of said survey; that all distances are correctly shown on the plat in feet and hundredths of a foot; that all monuments have been correctly placed in the ground as shown on said plat or will be placed as required by the local governmental unit; that the outside boundary lines are correctly designated on the plat and that there are no wetlands or public highways to be designated on said plat other than as shown.

*Walter J. Gregory*  
Walter J. Gregory, Land Surveyor  
Minnesota License No. 14889

STATE OF MINNESOTA  
COUNTY OF HENNEPIN

The foregoing Surveyor's Certificate was acknowledged before me this 25<sup>th</sup> day of March, 1993, by Walter J. Gregory, Land Surveyor.

*Joyce C. Holm*  
JOYCE C. HOLM  
NOTARY PUBLIC - MINNESOTA  
HENNEPIN COUNTY  
MY COMMISSION EXPIRES 2-2-97

*Joyce C. Holm*  
Notary Public, Hennepin County, Minnesota  
My Commission Expires 2-2-97

BLAINE, MINNESOTA

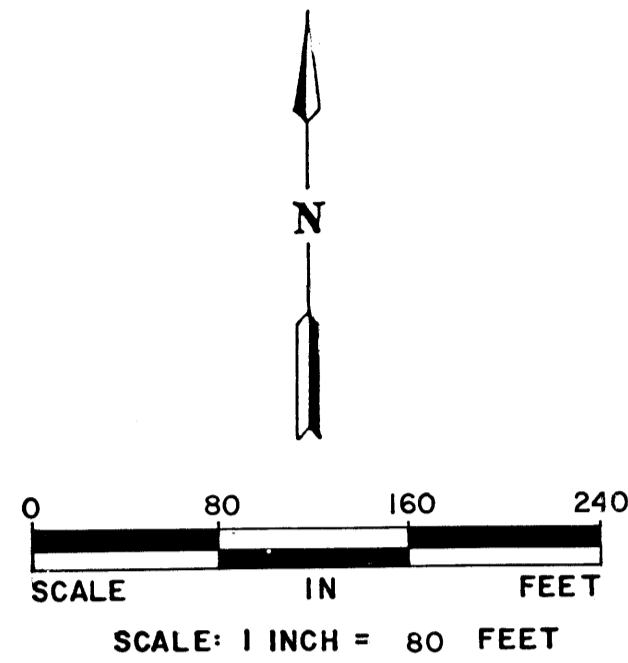
This plat of ABERDEEN OAKS was approved and accepted by the City Council of Blaine, Minnesota, at a regular meeting thereof held this 7<sup>th</sup> day of JANUARY, A.D., 1993. If applicable, the written comments and recommendations of the Commissioner of Transportation and the County Highway Engineer have been received by the City or the prescribed 30 day period has elapsed without receipt of such comments and recommendations, as provided by Minnesota Statutes, Section 505.03, Subd. 2.

CITY COUNCIL OF BLAINE, MINNESOTA  
By *Mayor* Mayor By *City Manager* City Manager

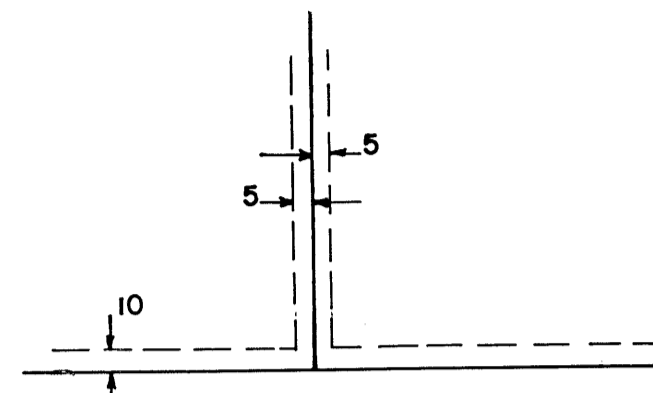
This plat has been checked and approved this 29<sup>th</sup> day of March, 1993.

*Merlyn D. Anderson*  
Merlyn D. Anderson  
Anoka County Surveyor

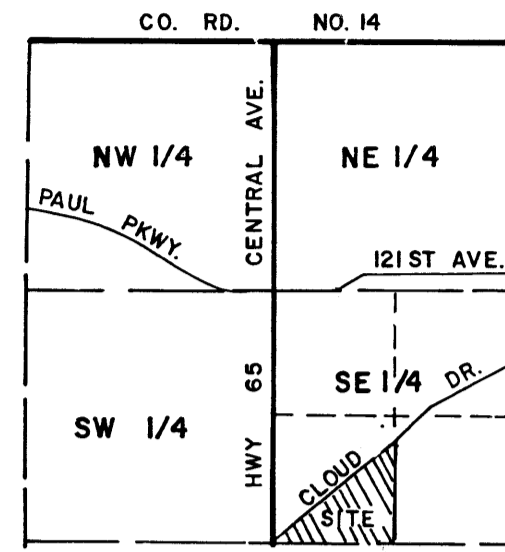
**MERILA & ASSOCIATES**  
ENGINEERING SURVEYING PLANNING



DRAINAGE AND UTILITY EASEMENTS ARE SHOWN THUS:



BEING 5 FEET IN WIDTH AND ADJOINING LOT LINES, AND BEING 10 FEET IN WIDTH AND ADJOINING RIGHT-OF-WAY LINES, UNLESS OTHERWISE SHOWN ON THE PLAT.

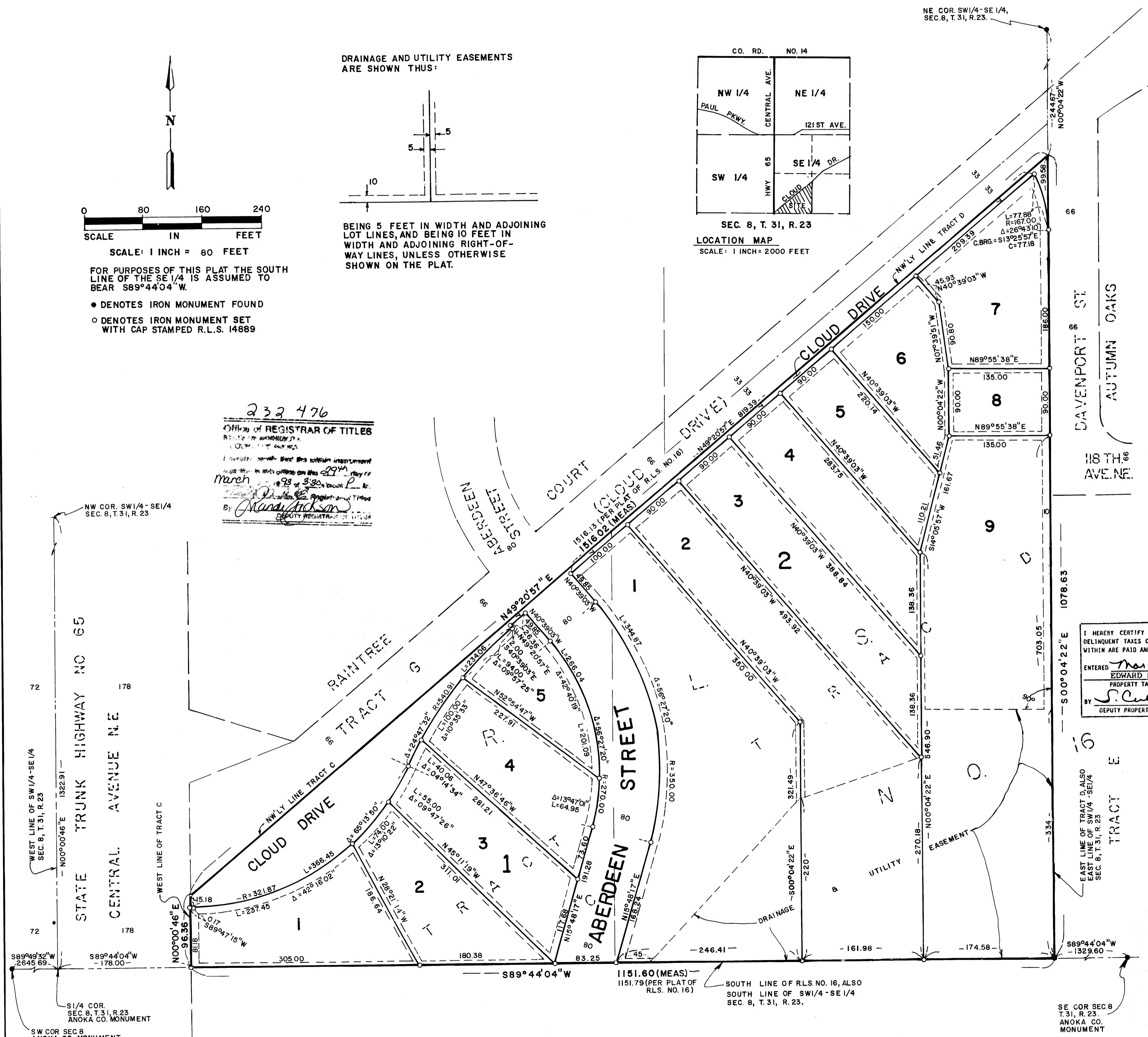


SEC. 8, T. 31, R. 23  
LOCATION MAP  
SCALE: 1 INCH = 2000 FEET

FOR PURPOSES OF THIS PLAT THE SOUTH LINE OF THE SE 1/4 IS ASSUMED TO BEAR S89°44'04"W.

- DENOTES IRON MONUMENT FOUND
- DENOTES IRON MONUMENT SET WITH CAP STAMPED R.L.S. 14889

232 476  
Office of REGISTRAR OF TITLES  
STATE OF MINNESOTA  
COUNTY OF ANOKA  
I hereby certify that the within instrument was recorded in my office on this 29<sup>th</sup> day of March, 1993 at 3:30 P.M.  
By *Mandy Jackson*  
COUNTY REGISTRAR OF TITLES



I HEREBY CERTIFY THAT THE CURRENT AND DELINQUENT TAXES ON THE LANDS DESCRIBED WITHIN ARE PAID AND THE TRANSFER IS ENTERED  
Mar 29 1993  
EDWARD H. TRESKA  
PROPERTY TAX ADMINISTRATOR  
BY *S. Culver*  
DEPUTY PROPERTY TAX ADMINISTRATOR

CITY OF BLAINE  
ANOKA CO. MINN.