

# AFFINITY AT THE COR

KNOW ALL PERSONS BY THESE PRESENTS: That the City of Ramsey, a Minnesota municipal corporation, owner of the following described property:

Outlots P, Q, and R, RAMSEY TOWN CENTER ADDITION, Anoka County, Minnesota;

AND

Tracts A, B, C, D, and E, REGISTERED LAND SURVEY NO. 241, Anoka County, Minnesota;

AND

That part of vacated West Town Center Drive, as dedicated in the plat of RAMSEY TOWN CENTER ADDITION, Anoka County, Minnesota, which lies south of the westerly extension of the north line of Outlot Q, said plat, and which lies northerly of the northwesterly extension of the most southwesterly line of said Outlot Q.

Has caused the same to be surveyed and platted as AFFINITY AT THE COR and does hereby dedicate to the public for public use the public ways as shown on this plat.

In witness whereof said City of Ramsey, a Minnesota municipal corporation, has caused these presents to be signed by its proper officer this \_\_\_\_\_ day of \_\_\_\_\_, 20\_\_\_\_.

Signed: City of Ramsey

By: [Signature] as ACTING MAYOR

JOHN LETOURNEAU  
(printed name)

BY: [Signature]  
KURT ULRICH, CITY ADMINISTRATOR

STATE OF Minnesota

COUNTY OF Anoka

This instrument was acknowledged before me on this 24<sup>th</sup> day of JULY, 2018 by JOHN LETOURNEAU & KURT ULRICH, as ACTING MAYOR & CITY ADMINISTRATOR of the City of Ramsey, a Minnesota municipal corporation, on behalf of the corporation.

[Signature]

Katie Schmidt  
(printed name)

Notary Public, Anoka County, Minnesota

My Commission Expires 01/31/2022

I Dennis B. Olmstead do hereby certify that this plat was prepared by me or under my direct supervision; that I am a duly Licensed Land Surveyor in the State of Minnesota; that this plat is a correct representation of the boundary survey; that all mathematical data and labels are correctly designated on this plat; that all monuments depicted on this plat have been, or will be correctly set within one year; that all water boundaries and wet lands, as defined in Minnesota Statutes, Section 505.01, Subd. 3, as of the date of this certificate are shown and labeled on this plat; and all public ways are shown and labeled on this plat.

Dated this 18<sup>th</sup> day of July, 2018.

[Signature]

Dennis B. Olmstead, Licensed Land Surveyor  
Minnesota License No. 18425

STATE OF MINNESOTA

COUNTY OF HENNEPIN

This instrument was acknowledged before me this 18<sup>th</sup> day of July, 2018 by Dennis B. Olmstead.

[Signature]

Daniel P. Ekrem  
(printed name)

Notary Public, Dakota County, Minnesota

My Commission Expires 1-31-19

City Council, City of Ramsey, Minnesota

This plat of AFFINITY AT THE COR was approved and accepted by the City Council of the City of Ramsey, Minnesota at a regular meeting thereof held this 24<sup>th</sup> day of APRIL, 2018, and said plat is in compliance with the provisions of Minnesota Statutes, Section 505.03, Subd. 2.

City Council, City of Ramsey, Minnesota

By: [Signature]  
John LeTourneau, Acting Mayor

By: [Signature]  
Jo Thieling, City Clerk

County Surveyor

I hereby certify that in accordance with Minnesota Statutes, Section 505.021, Subd. 11, this plat has been reviewed and approved this 7<sup>th</sup> day of August, 2018.

By: [Signature]  
Charles F. Gitzen  
Anoka County Surveyor

County Auditor/Treasurer

Pursuant to Minnesota Statutes, Section 505.021, Subd. 9, taxes payable in the year 2018 on the land hereinbefore described have been paid. Also, pursuant to Minnesota Statutes, Section 272.12, there are no delinquent taxes and transfer entered this 10<sup>th</sup> day of Aug, 2018.

[Signature]  
Jonell M. Sawyer  
Property Tax Administrator

By: [Signature], Deputy

County Recorder/Registrar of Titles  
County of Anoka, State of Minnesota

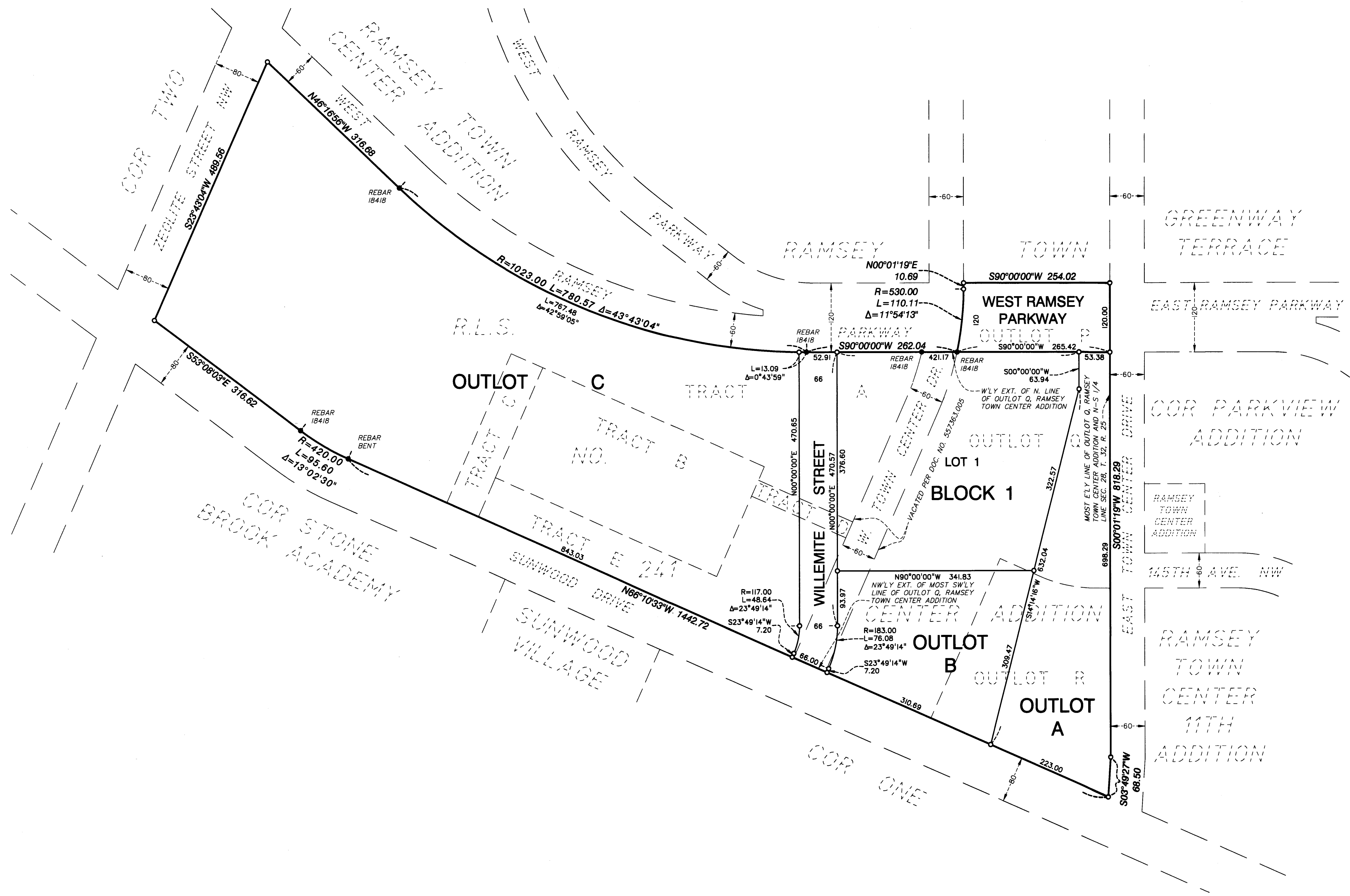
I hereby certify that this plat of AFFINITY AT THE COR was filed in the office of the County Recorder/Registrar of Titles for public record on this 10<sup>th</sup> day of Aug, 2018, at 11:20 o'clock A.M. and was duly recorded as Document Number 558797.004.

[Signature]  
Jonell M. Sawyer  
County Recorder/Registrar of Titles

By: [Signature], Deputy

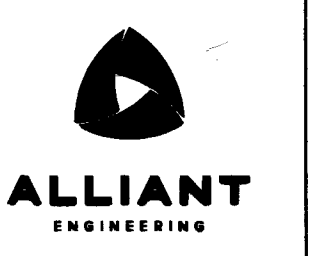
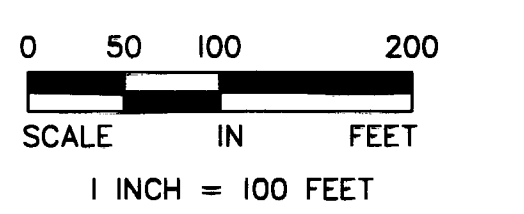


# AFFINITY AT THE COR



THE MOST EASTERLY LINE OF OUTLOT Q, RAMSEY TOWN CENTER ADDITION, ANOKA COUNTY, MINNESOTA IS ASSUMED TO HAVE A BEARING OF S00°01'19\"/>

- Denotes monument found 1/2 inch iron pipe
- Denotes 1/2 inch x 18 inch iron monument set marked by license no. 18425 unless otherwise shown



19.00