

# ALEXANDRAS COVE FOURTH ADDITION

CITY OF COON RAPIDS  
COUNTY OF ANOKA  
SEC. 4, T. 31, R. 24.  
BK 74 of ABST pg 30

KNOW ALL PERSONS BY THESE PRESENTS: That Shamrock Development, Inc., a Minnesota corporation, fee owner of the following described property situated in the State of Minnesota, County of Anoka, to wit:

Lots 1, 2, 3, 4, 5, 6, 7, 8, 9, 10, 11, 12, 13, 14, 15, 16, 17, 18, 19, 20, 21, 22, 23, 24, 25, and 26, Block 1, ALEXANDRAS COVE THIRD ADDITION, Anoka County, Minnesota.

Has caused the same to be surveyed and platted as ALEXANDRAS COVE FOURTH ADDITION and does hereby dedicate to the public for public use forever the easements, as shown on this plat, for drainage and drainage and utility purposes only. Also dedicating to the County of Anoka the right to restrict access onto County State Aid Highway No. 14 as shown on this plat.

In witness whereof said Shamrock Development, Inc. has caused these presents to be signed by its proper officer this 28<sup>th</sup> day of November, 2007.

SHAMROCK DEVELOPMENT, INC.

By: James M. Stanton  
James M. Stanton, President

State of Minnesota, County of Anoka

The foregoing instrument was acknowledged before me this 28<sup>th</sup> day of November, 2007, by James M. Stanton, as President of Shamrock Development, Inc., a Minnesota corporation, on behalf of the corporation.

Angela Bejan Notary Public  
Anoka County, Minnesota  
My Commission expires: January 31, 2010

I hereby certify that this plat of ALEXANDRAS COVE FOURTH ADDITION is a correct representation of the boundary survey; that all mathematical data and labels are correctly designated on the plat; that all monuments depicted on the plat have been or will be correctly set within one year as indicated on the plat; that all water boundaries and wet lands as of the date of the surveyor's certification are shown and labeled on the plat; that all public ways are shown and labeled on the plat. I further certify that this plat was prepared by me or under my direct supervision and that I am a duly licensed land surveyor under the laws of the State of Minnesota.

Lynn P. Caswell  
Lynn P. Caswell, Land Surveyor  
Minnesota License No. 13057

State of Minnesota, County of Sherburne

The foregoing instrument was acknowledged before me this 21<sup>st</sup> day of November, 2007, by Lynn P. Caswell, Land Surveyor, Minnesota License No. 13057.

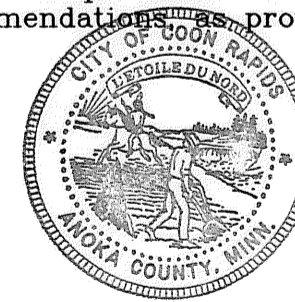
Elizabeth G. Haglund Notary Public  
Sherburne County, Minnesota  
My Commission expires: January 31, 2010

Annexed plat of ALEXANDRAS COVE FOURTH ADDITION was approved by the Planning Commission of the City of Coon Rapids, Minnesota this 19<sup>th</sup> day of November, 2006.

By: Donna M. Nadeau Chairman

Annexed plat of ALEXANDRAS COVE FOURTH ADDITION was approved by the City Council of Coon Rapids, Minnesota at a regular meeting thereof held this 6<sup>th</sup> day of November, 2006. If applicable, the written comments and recommendations of the Commissioner of Transportation and the County Highway Engineer have been received by the City or the prescribed 30 day period has elapsed without receipt of such comments and recommendations as provided by Minnesota Statutes Section 505.03, Subdivision 2.

By: [Signature] Mayor  
Attest: Joan R. Anderson Clerk



This plat has been checked and approved this 11<sup>th</sup> day of December, 2007.

Larry O. Hoium Anoka County Surveyor  
by Charles F. Setzen, Deputy

1997621.001  
OFFICE OF COUNTY RECORDER  
STATE OF MINNESOTA, COUNTY OF ANOKA  
I hereby certify that the within instrument was filed in this office for record on the 11 Dec AD, 2007  
at 2:38 o'clock P.M., and was duly recorded in book 74 ABST page 30  
Maureen J. Devine  
County Recorder  
By: MDT  
Deputy

I HEREBY CERTIFY THAT THE CURRENT AND DELINQUENT TAXES ON THE LANDS DESCRIBED WITHIN ARE PAID AND THE TRANSFER IS ENTITLED  
Dec 11, 2007  
MAUREEN J. DEVINE  
PROPERTY TAX ADMINISTRATOR  
BY: S. Culver  
DEPUTY PROPERTY TAX ADMINISTRATOR

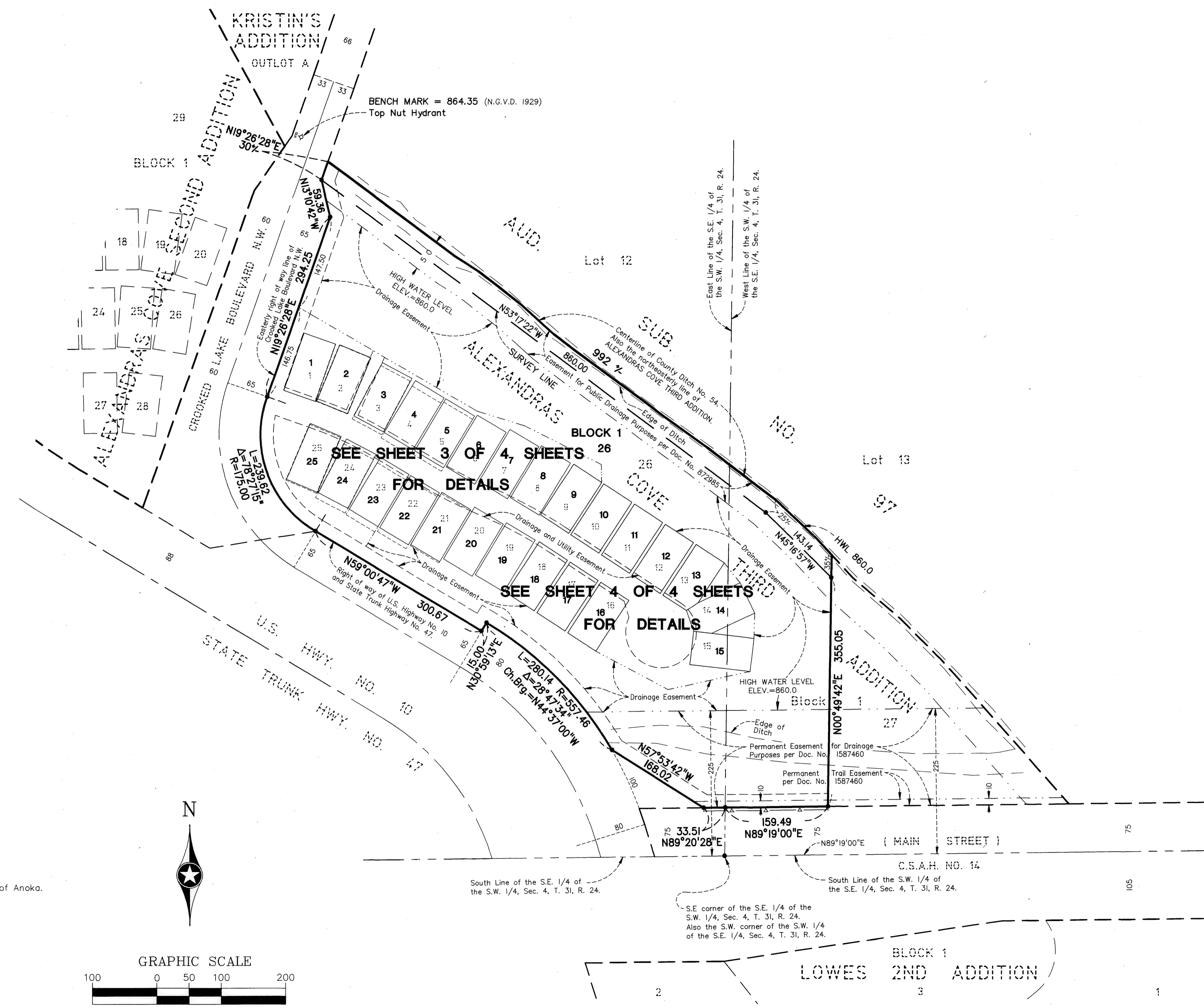
\$516.00

John Oliver & Associates

# ALEXANDRAS COVE FOURTH ADDITION

CITY OF COON RAPIDS  
COUNTY OF ANOKA  
SEC. 4, T. 31, R. 24.

BK74 of ABST pg 30

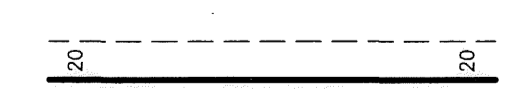


For the purposes of this plat, the South line of the S.W. 1/4 of the S.E. 1/4, Sec. 4, Twp. 31, Rng. 24, is assumed to bear N 89°19'00" E.

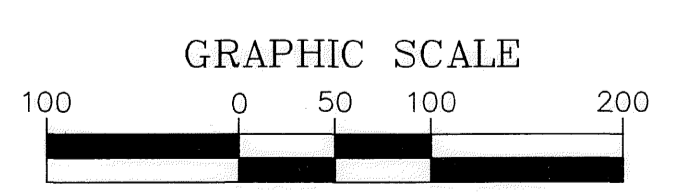
• Denotes iron monument found.

—▲—▲— Denotes access dedicated to the County of Anoka.

Drainage and Utility Easements are shown thus:



Being 20 feet in width and adjoining right-of-way lines, unless otherwise shown on the plat.



Scale: 1 inch = 100 feet

# ALEXANDRAS COVE FOURTH ADDITION

CITY OF COON RAPIDS  
COUNTY OF ANOKA  
SEC. 4, T. 31, R. 24.

Bk 74 of ABST pg 30

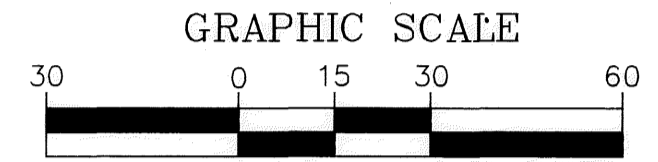
For the purposes of this plat, the South line of the S.W. 1/4 of the S.E. 1/4, Sec. 4, Twp. 31, Rng. 24, is assumed to bear N. 89°19'00" E.

- Denotes iron pipe set with a plastic plug stamped R.L.S. 13057.
- Denotes iron monument found.

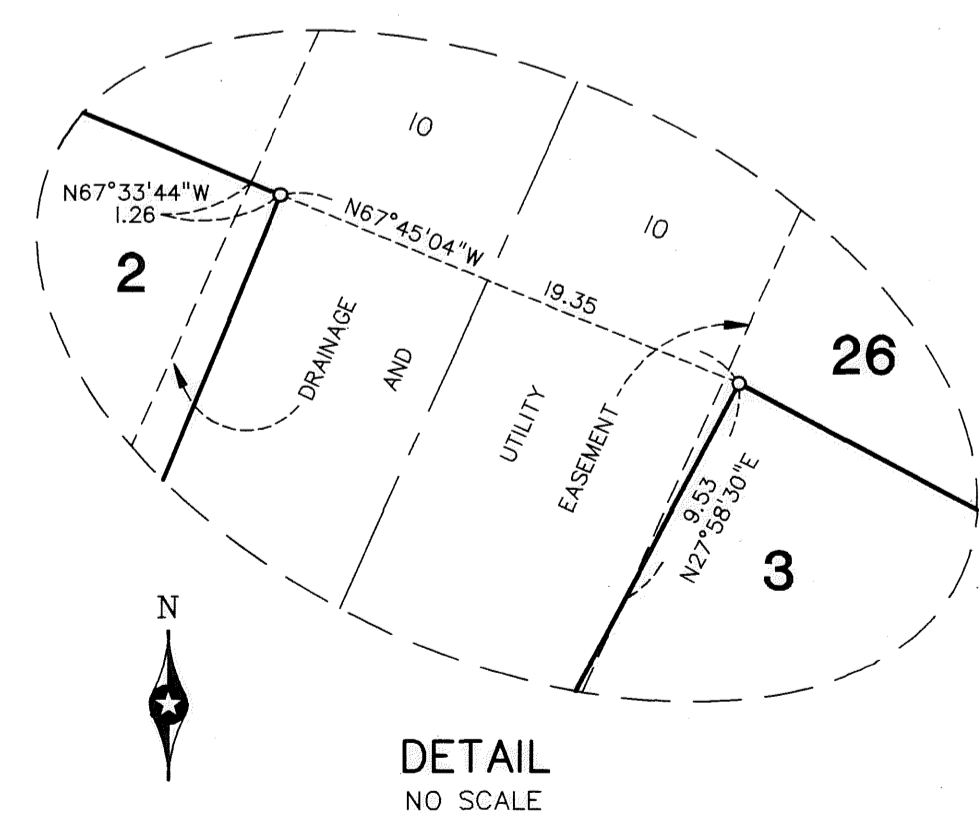
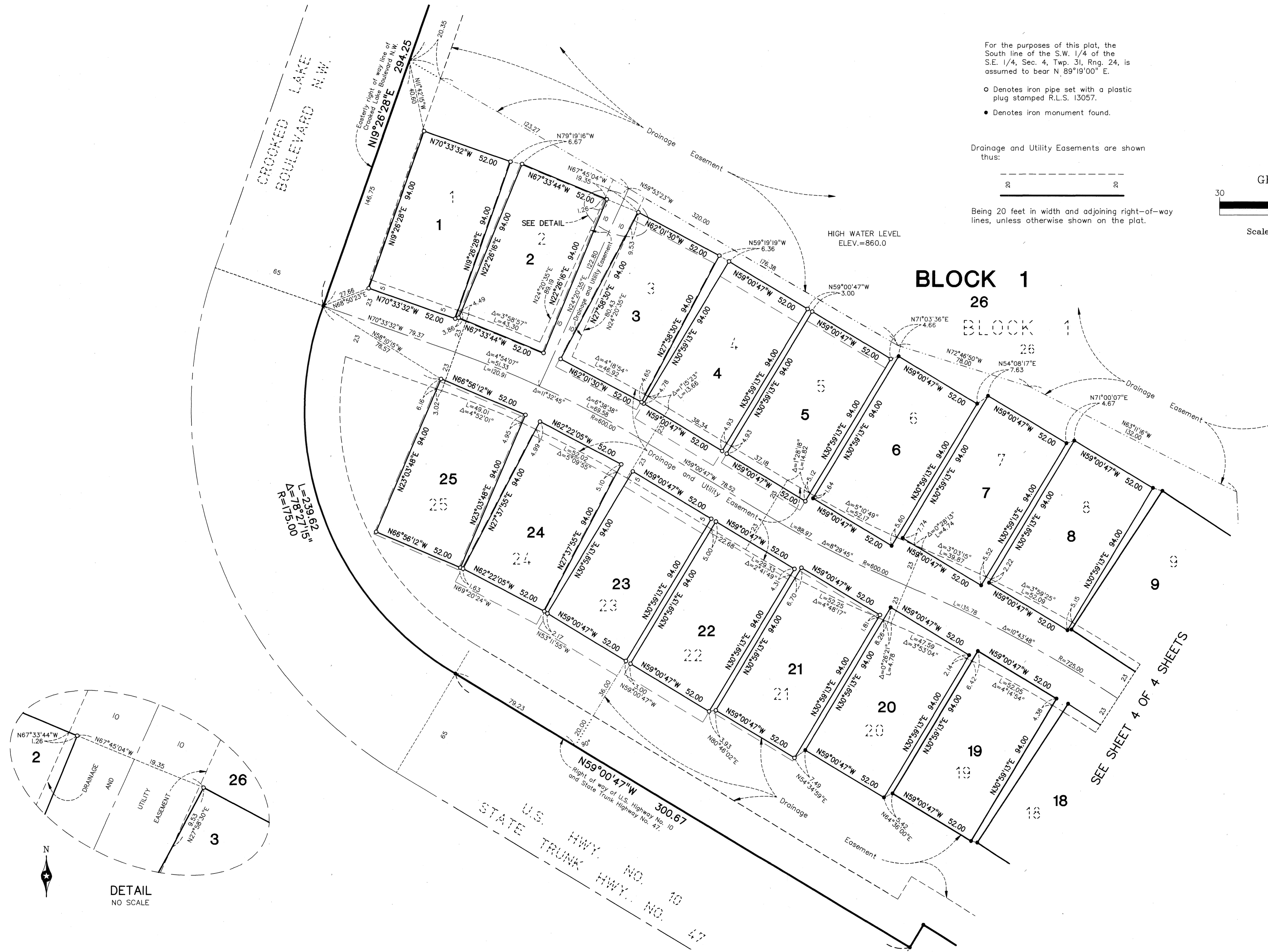
Drainage and Utility Easements are shown thus:



Being 20 feet in width and adjoining right-of-way lines, unless otherwise shown on the plat.



Scale: 1 inch = 30 feet



DETAIL  
NO SCALE

SEE SHEET 4 OF 4 SHEETS

# ALEXANDRAS COVE FOURTH ADDITION

CITY OF COON RAPIDS  
COUNTY OF ANOKA  
SEC. 4, T. 31, R. 24.

BK74 of ABST pg 30

For the purposes of this plat, the South line of the S.W. 1/4 of the S.E. 1/4, Sec. 4, Twp. 31, Rng. 24, is assumed to bear N 89°19'00" E.

• Denotes iron monument found.

Drainage and Utility Easements are shown thus:

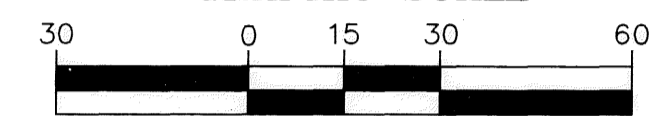


Being 20 feet in width and adjoining right-of-way lines, unless otherwise shown on the plat.

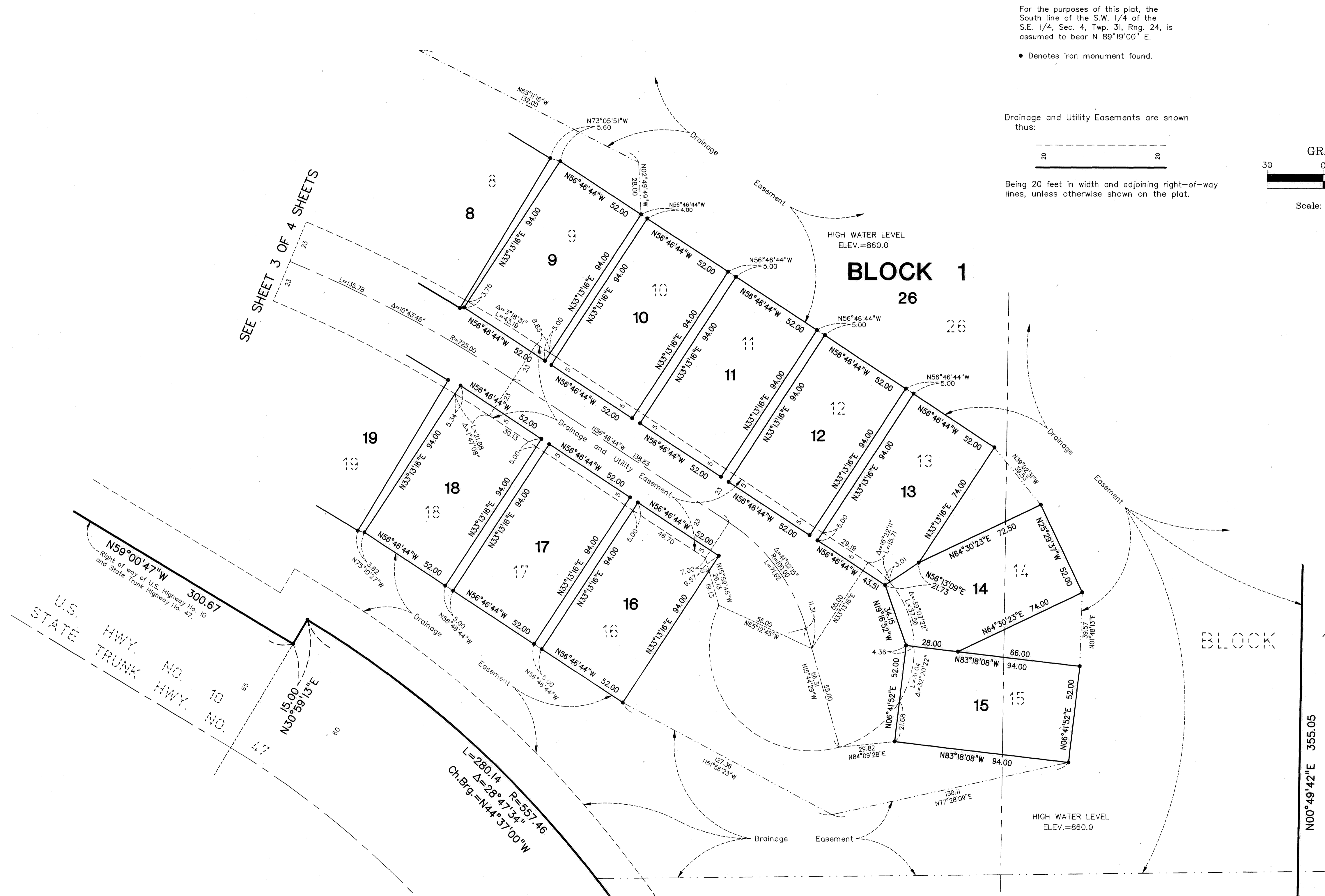
N



GRAPHIC SCALE



Scale: 1 inch = 30 feet



SEE SHEET 3 OF 4 SHEETS

BLOCK 1

27