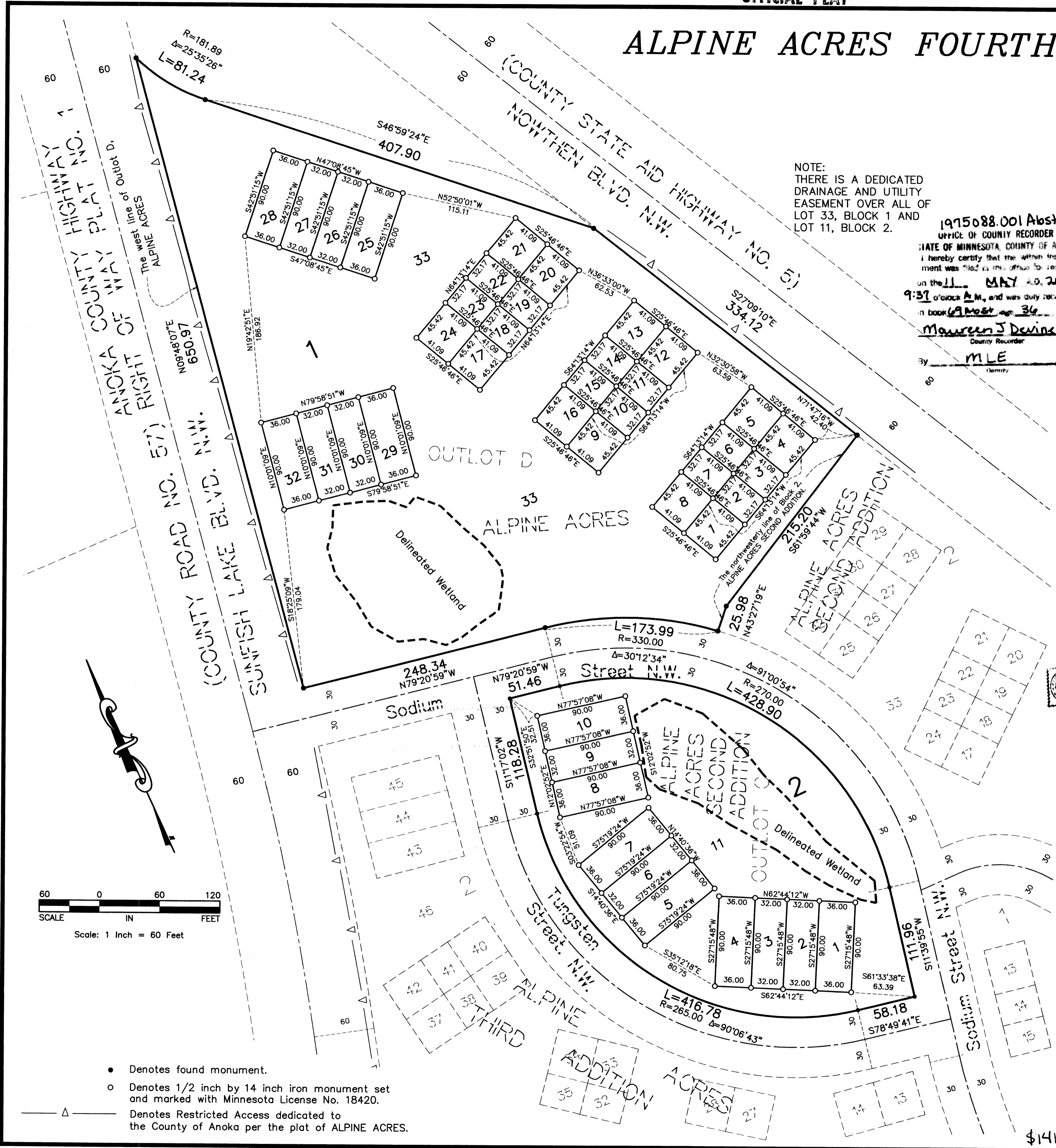


# ALPINE ACRES FOURTH ADDITION

Bk 1A of A66+P336

CITY OF RAMSEY  
COUNTY OF ANOKA  
Sec. 23, Twp. 32, Rge. 25



NOTE:  
THERE IS A DEDICATED  
DRAINAGE AND UTILITY  
EASEMENT OVER ALL OF  
LOT 33, BLOCK 1 AND  
LOT 11, BLOCK 2.

1915088.001 Abstract  
OFFICE OF COUNTY RECORDER  
STATE OF MINNESOTA, COUNTY OF ANOKA  
I hereby certify that the within instru-  
ment was filed in this office for record  
on the 11 MAY A.D. 2005  
at 9:31 o'clock A.M., and was duly recorded  
in book 69 Most pg 36  
Maureen J Devine  
County Recorder  
By MLE  
Deputy

KNOW ALL PERSONS BY THESE PRESENTS: That Oak Creek Builders, Inc., a Minnesota Corporation, fee owner, of the following described property situated in the County of Anoka, State of Minnesota to wit:

Outlot C, ALPINE ACRES SECOND ADDITION, Anoka County, Minnesota, and that part of Outlot D, ALPINE ACRES, Anoka County, Minnesota, lying northwesterly of Block 2, ALPINE ACRES SECOND ADDITION, Anoka County, Minnesota

Has caused the same to be surveyed, platted and known as ALPINE ACRES FOURTH ADDITION and does hereby donate and dedicate to the public for public use forever the drainage and utility easements as shown on this plat. In witness whereof said Oak Creek Builders, Inc., a Minnesota Corporation, has caused these presents to be signed by its proper officer this 26<sup>th</sup> day of August, 2004.

Oak Creek Builders, Inc.

Timothy Pomerleau, as president

STATE OF MINNESOTA  
COUNTY OF

The foregoing instrument was acknowledged before me this 25<sup>th</sup> day of August, 2004, by Timothy Pomerleau, as president of Oak Creek Builders, Inc., a Minnesota Corporation, on behalf of the corporation.

SUE A. WEIDEMA  
Notary Public-Minnesota  
Anoka County  
My Commission Expires Jan. 31, 2005

My Commission Expires Jan. 31, 2005

I hereby certify that I have surveyed and platted the property on this plat as ALPINE ACRES FOURTH ADDITION; that this plat is a correct representation of said survey; that all distances are correctly shown on said plat in feet and hundredths of a foot; that all monuments have been correctly placed in the ground as shown on said plat or will be placed as required by the local governmental unit as designated on said plat; that the outside boundary lines are correctly designated on said plat; and that there are no wetlands as defined in MS 505.02, subd. 1, or public highways to be designated other than as shown.

Charles R. Christopherson, Land Surveyor  
Minnesota License No. 18420

STATE OF MINNESOTA  
COUNTY OF ANOKA

The foregoing instrument was acknowledged before me this 24<sup>th</sup> day of August, 2004, by Charles R. Christopherson, Land Surveyor.

MICHELLE L. HOWLAND  
NOTARY PUBLIC - MINNESOTA  
MY COMM. EXP. 01/31/2005

My Commission Expires January 31, 2005

CITY OF RAMSEY, MINNESOTA

This plat of ALPINE ACRES FOURTH ADDITION was approved and accepted by the City Council of Ramsey, Minnesota, at a regular meeting thereof held this 10<sup>th</sup> day of August, 2004. If applicable, the written comments and recommendations of the Commissioner of Transportation and the County Highway Engineer have been received by the City or the prescribed 30 day period has elapsed without receipt of such comments and recommendations, as provided by Minn. Statutes Section 505.03, Subd. 2.

CITY COUNCIL OF THE CITY OF RAMSEY, MINNESOTA

Thomas Gamec, Mayor

JoAnn M. Thieling, City Clerk

ANOKA COUNTY SURVEYOR

This plat was checked and approved on this 11<sup>th</sup> day of MAY, 2005.

Anoka County Surveyor

I HEREBY CERTIFY THAT THE CURRENT AND DELINEATED LINES ON THE LANDS DESCRIBED WITHIN ARE TRUE AND THE TRANSFER IS VALID.  
May 11, 2005  
S. Culver

For the purposes of this plat the west line of Outlot D, ALPINE ACRES is assumed to bear N 09°48'07"E.

\$1415.00

- Denotes found monument.
- Denotes 1/2 inch by 14 inch iron monument set and marked with Minnesota License No. 18420.
- △ Denotes Restricted Access dedicated to the County of Anoka per the plat of ALPINE ACRES.