

OFFICIAL PLAT

1925861

ALPINE ACRES SECOND ADDITION Bk. 67 pg 28

CITY OF RAMSEY
COUNTY OF ANOKA
Sec. 23, Twp. 32, Rge. 25

I HEREBY CERTIFY THAT THE CURRENT AND DELINQUENT TAXES ON THE LANDS DESCRIBED WITHIN ARE PAID AND THE TRANSFER IS ENTERED
MAY 25, 2004
MAUREND J. DEVINE
PROPERTY TAX ADMINISTRATOR
BY: *[Signature]*
DEPUTY PROPERTY TAX ADMINISTRATOR

OFFICE OF COUNTY RECORDER
STATE OF MINNESOTA, COUNTY OF ANOKA
I hereby certify that the within instrument was filed in this office for record on the 25 May A.D., 2004
at 10:10 o'clock A.M., and was duly recorded in book 67 page 28
Maurend Devine
County Recorder
By SLZ

KNOW ALL PERSONS BY THESE PRESENTS: That Oak Creek Builders, Inc., a Minnesota Corporation, fee owner, of the following described property situated in the County of Anoka, State of Minnesota to wit:

Outlots A, B, C, ALPINE ACRES, Anoka County, Minnesota, and that part of Outlot D, said ALPINE ACRES lying southeasterly of the following described line:

Commencing at the most westerly corner of said Outlot D; thence South 79 degrees 20 minutes 59 seconds East, along the southwesterly line of said Outlot D, 248.34 feet; thence southeasterly along said southwesterly line and along a tangential curve concave to the southwest 173.99 feet to the point of beginning of the line to be described, said curve having a radius of 330.00 feet and a central angle of 30 degrees 12 minutes 34 seconds; thence North 43 degrees 27 minutes 19 seconds East a distance of 25.98 feet; thence North 61 degrees 59 minutes 44 seconds East a distance of 215.20 feet, more or less, to the westerly line of County State Aid Highway No. 5 and said line there terminating.

Has caused the same to be surveyed, platted and known as ALPINE ACRES SECOND ADDITION and does hereby donate and dedicate to the public for public use forever the streets and avenue and the drainage and utility easements as shown on this plat. In witness whereof said Oak Creek Builders, Inc., a Minnesota Corporation, has caused these presents to be signed by its proper officer this 19 day of May, 2004.

Oak Creek Builders, Inc.

[Signature]
Timothy Pomerleau, as president

STATE OF MINNESOTA
COUNTY OF Anoka

The foregoing instrument was acknowledged before me this 19 day of May, 2004, by Timothy Pomerleau, as president of Oak Creek Builders, Inc., a Minnesota Corporation, on behalf of the corporation.

SUE A. WEIDEMA
Notary Public-Minnesota
Anoka County
My Commission Expires Jan. 31, 2005

[Signature]
Notary Public, Minnesota
My Commission Expires Jan 31, 2005

I hereby certify that I have surveyed and platted the property on this plat as ALPINE ACRES SECOND ADDITION; that this plat is a correct representation of said survey; that all distances are correctly shown on said plat in feet and hundredths of a foot; that all monuments have been correctly placed in the ground as shown on said plat or will be placed as required by the local governmental unit as designated on said plat; that the outside boundary lines are correctly designated on said plat; and that there are no wetlands as defined in MS 505.02, sub. 1, or public highways to be designated other than as shown.

[Signature]
Charles R. Christopherson, Land Surveyor
Minnesota License No. 18420

STATE OF MINNESOTA
COUNTY OF ANOKA

The foregoing instrument was acknowledged before me this 19 day of May, 2004, by Charles R. Christopherson, Land Surveyor.

MICHELLE L. HOWLAND
NOTARY PUBLIC - MINNESOTA
MY COMM. EXP. 01/31/2005

[Signature]
Notary Public, Minnesota
My Commission Expires January 31, 2005

CITY OF RAMSEY, MINNESOTA

This plat of ALPINE ACRES SECOND ADDITION was approved and accepted by the City Council of Ramsey, Minnesota, at a regular meeting thereof held this day of April, 2004. If applicable, the written comments and recommendations of the Commissioner of Transportation and the County Highway Engineer have been received by the City or the prescribed 30 day period has elapsed without receipt of such comments and recommendations, as provided by Minn. Statutes Section 505.03, Subd. 2.

CITY COUNCIL OF THE CITY OF RAMSEY, MINNESOTA

[Signature]
Thomas Gamec, Mayor

[Signature]
James E. Norman, City Administrator

ANOKA COUNTY SURVEYOR

This plat was checked and approved on this 25 day of MAY, 2004.

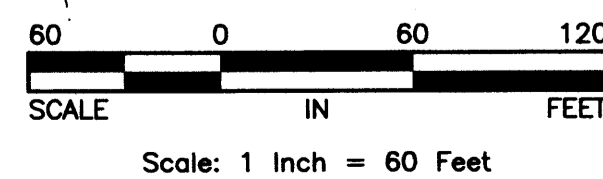
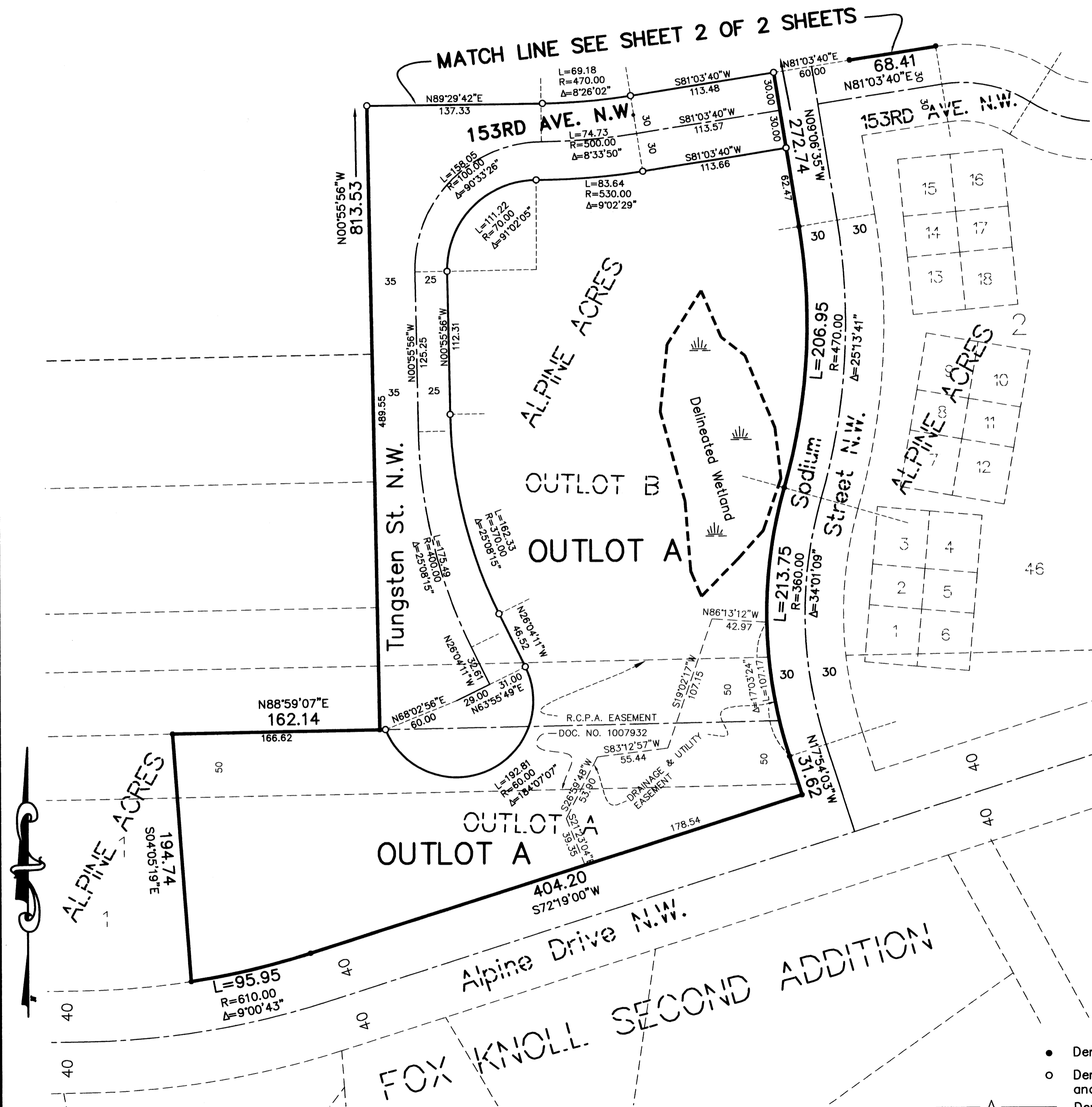
[Signature]
Anoka County Surveyor

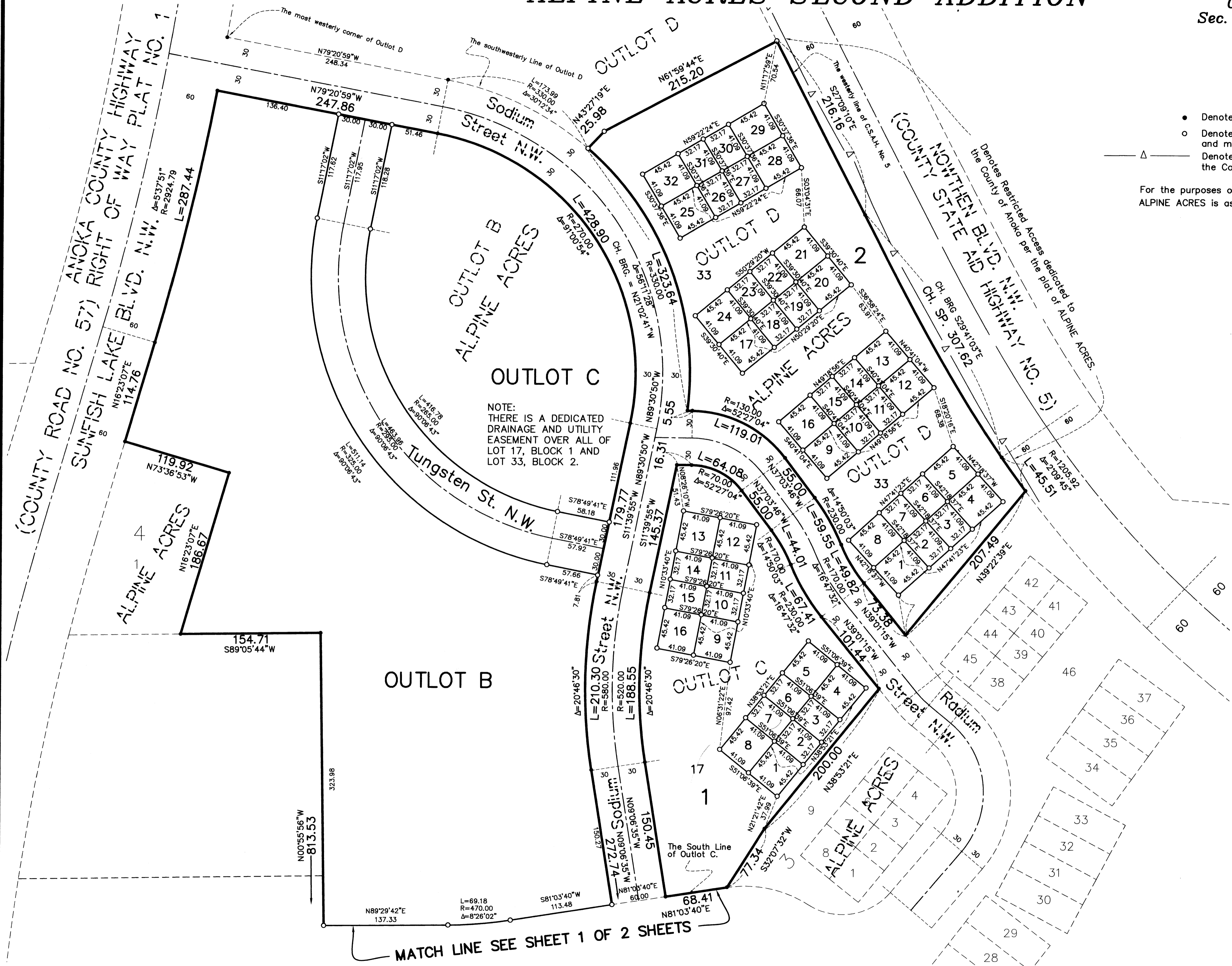
- Denotes found monument.
- Denotes 1/2 inch by 14 inch iron monument set and marked with Minnesota License No. 18420.
- Δ — Denotes Restricted Access dedicated to the County of Anoka per the plat of ALPINE ACRES.

For the purposes of this plat the south line of Outlot C, ALPINE ACRES is assumed to bear N 81°03'40"E.

Receipt # 2004070853 \$ 1716.00

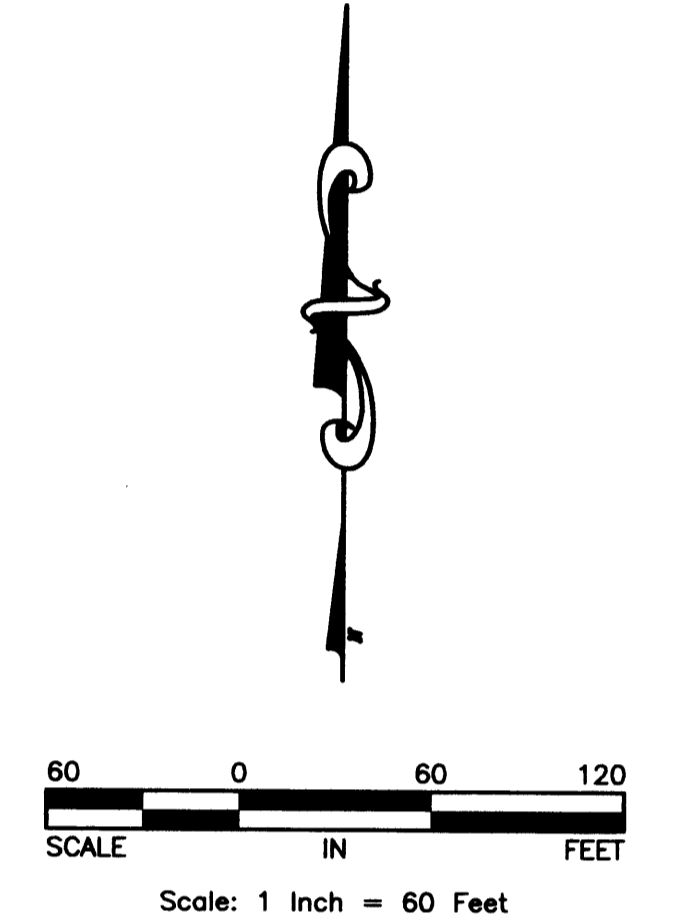
Hakanson
Anderson
Assoc., Inc.





- Denotes found monument.
- Denotes 1/2 inch by 14 inch iron monument set and marked with Minnesota License No. 18420.
- △ Denotes Restricted Access dedicated to the County of Anoka per the plat of ALPINE ACRES.

For the purposes of this plat the south line of Outlot C, ALPINE ACRES is assumed to bear N 81°03'40"E.



MATCH LINE SEE SHEET 1 OF 2 SHEETS

