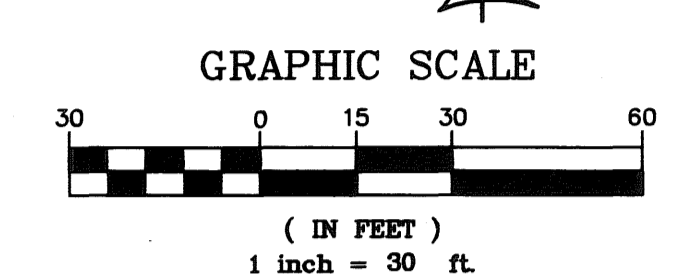
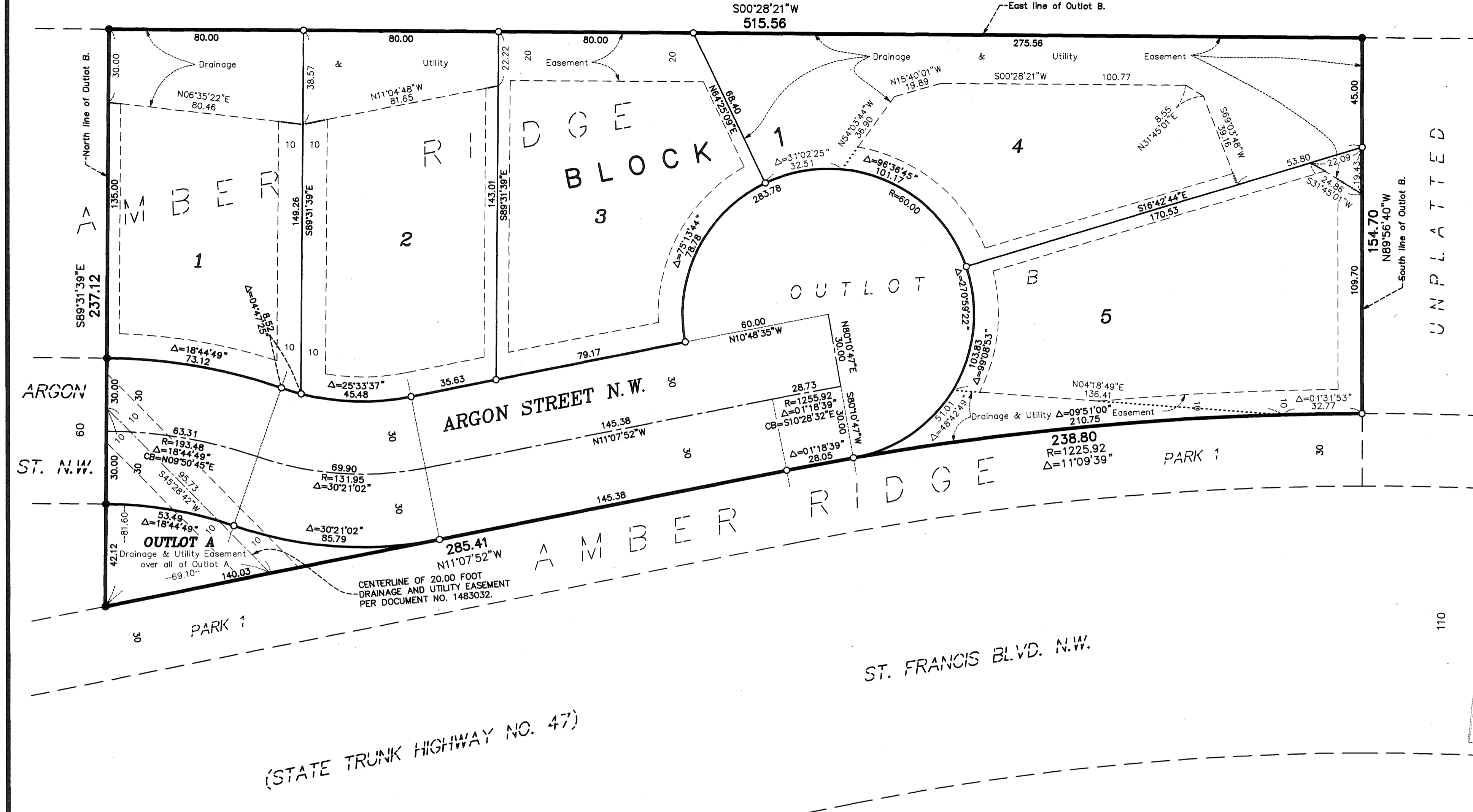


AMBER RIDGE 2ND ADDITION

R I V E R ' S B E N D

BK 74 of Abst PG 8
CITY OF RAMSEY
COUNTY OF ANOKA
SEC. 25, TWP. 32, RNG. 25

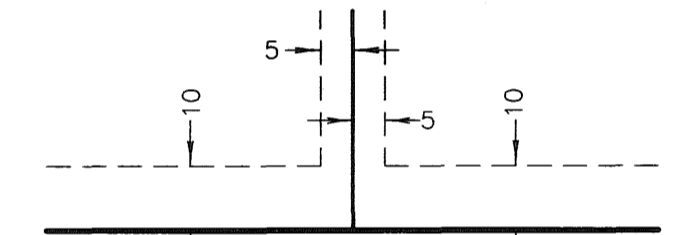
1995007.001
OFFICE OF COUNTY RECORDER
STATE OF MINNESOTA, COUNTY OF ANOKA
I hereby certify that the within instru-
ment was filed in this office for record
on the 8th of August, 2007
11:03 o'clock A.M., and was duly recorded
in book 74 Abst page 8
Maurice J. Devine
County Recorder
By BMC
Deputy



For the purposes of this plat, the East line of Outlot B is assumed to have a bearing of South 00°28'21" West.

All monuments required by Minnesota Statute, whether shown on this plat or not, will be set within one year of the recording date of this plat, and shall be evidenced by a 1/2 inch by 14 inch iron pipe marked by RLS 20595.

DRAINAGE AND UTILITY EASEMENTS ARE SHOWN THUS:



being 5 feet in width, and adjoining lot lines, and 10 feet in width and adjoining right of way lines and rear lot lines unless otherwise shown on this plat.

- Denotes iron monument found
- Denotes 1/2 inch by 14 inch iron monument set and marked with license number 20595

I HEREBY CERTIFY THAT THE CURRENT AND DELINQUENT TAXES ON THE LANDS DESCRIBED WITHIN ARE PAID AND THE TRANSFER IS ENTERED
MAURICE J. DEVINE
PROPERTY TAX ADMINISTRATOR
BY *S. C. Culver*
DEPUTY PROPERTY TAX ADMINISTRATOR

(STATE TRUNK HIGHWAY NO. 47)

STATE OF MINNESOTA
COUNTY OF Anoka
The foregoing instrument was acknowledged before me this 30th day of May, 2007, by Anthony J. Emmerich as chief manager of E & G Development, LLC, a Minnesota limited liability company, on behalf of said company.

Baleen Roberts
BALEEN ROBERTS
NOTARY PUBLIC - MINNESOTA
My Commission Expires Jan. 31, 2010

Terrence E. Rothenbacher
Notary Public, Anoka County, Minnesota
My Commission Expires Jan 31, 2010

STATE OF MINNESOTA
COUNTY OF Anoka
The foregoing Surveyor's Certificate by Terrence E. Rothenbacher, Minnesota License Number 20595, was acknowledged before me this 21 day of March, 2007.

Connie Rae Moldenhauer
CONNIE RAE MOLDEHAUER
NOTARY PUBLIC
MY COMM. EXP. 9/31/2010

Connie Rae Moldenhauer
Notary Public, Anoka County, Minnesota
My Commission Expires 09/31/2010

KNOW ALL MEN BY THESE PRESENTS: That E & G Development, LLC, a Minnesota limited liability company, owner and Village Bank, a Minnesota Corporation, mortgagee of the following described property situated in the County of Anoka, State of Minnesota, to wit:

Outlot B, AMBER RIDGE, according to the plat thereof, Anoka County, Minnesota.

Have caused the same to be surveyed and platted as AMBER RIDGE 2ND ADDITION and do hereby donate and dedicate to the public for public use forever the street and also the easements as shown on this plat for drainage and utility purposes only.

In witness whereof said E & G Development, LLC, a Minnesota limited liability company, has caused these presents to be signed by its proper officer this 30th day of May, 2007, and in witness whereof said Village Bank, a Minnesota Corporation, has caused these presents to be signed by its proper officer this 30th day of May, 2007.

E & G DEVELOPMENT, LLC
Anthony J. Emmerich
Anthony J. Emmerich, Chief Manager

VILLAGE BANK
Lawrence J. Schminski
Lawrence J. Schminski, President

STATE OF MINNESOTA
COUNTY OF Anoka
The foregoing instrument was acknowledged before me this 4th day of June, 20007, by Lawrence J. Schminski, as president of Village Bank, a Minnesota Corporation, on behalf of said corporation.

Kelley Lynn Vantassel
KELLEY LYNN VANTASSEL
Notary Public
Minnesota
My Commission Expires January 31, 2010

Terrence E. Rothenbacher
Notary Public, Anoka County, Minnesota
My Commission Expires January 31, 2005

I hereby certify that I have surveyed and platted the property on this plat as AMBER RIDGE 2ND ADDITION, that this plat is a correct representation of the survey, that all distances are correctly shown on the plat in feet and hundredths of a foot; that all monuments have been correctly placed in the ground as shown or will be correctly placed as required by the local governmental unit; that the outside boundary lines are correctly designated on the plat, and that there are no wetlands, in accordance with Section 505.07 Subdivision 3, or public highways to be designated other than shown.

Terrence E. Rothenbacher
Terrence E. Rothenbacher, Land Surveyor
Minnesota License No. 20595

RAMSEY, MINNESOTA
This plat of AMBER RIDGE 2ND ADDITION was approved and accepted by the City Council of the City of Ramsey, Minnesota, at a regular meeting thereof held this 9th day of January, 2007. If applicable, the written comments and recommendations of the Commissioner of Transportation and the County Highway Engineer have been received by the City or the prescribed 30 day period has elapsed without receipt of such comments and recommendations, as provided by Minnesota Statutes Section 505.03, Section 2.

Mayor
Mayor

Mayor
Mayor

Checked and approved this 8th day of August, 2007.

By Larry D. Hoium
Anoka County Surveyor
by Charles F. Gutzon, Deputy

PIONEERengineering
CIVIL ENGINEERS LAND PLANNERS LAND SURVEYORS LANDSCAPE ARCHITECTS

\$56.00