

AMEN CORNER THIRD ADDITION

KNOW ALL PERSONS BY THESE PRESENTS: That Amen Corner Townhomes Association, Inc., a nonprofit corporation, owner of the following described property:

Outlot A, AMEN CORNER SECOND ADDITION, Anoka County, Minnesota.

And that Steven Kuhl and Sandra Kuhl, husband and wife, owners of the following described property:

Lot 7, Block 2, AMEN CORNER SECOND ADDITION, Anoka County, Minnesota EXCEPT that part of said Lot 7 described as follows: Beginning at the most easterly corner of said Lot 7; thence North 50 degrees 04 minutes 11 seconds West (assumed bearing) along the northeasterly line of said Lot 7 a distance of 39.97 feet to an angle point on said northeasterly line; thence South 35 degrees 28 minutes 43 seconds East 31.70 feet; thence North 89 degrees 15 minutes 21 seconds East 12.25 feet to the point of beginning.

Have caused the same to be surveyed and platted as AMEN CORNER THIRD ADDITION and do hereby dedicate to the public for public use the drainage and utility easements as shown by this plat.

In witness whereof said Amen Corner Townhomes Association, Inc., a nonprofit corporation, has caused these presents to be signed by its proper officer this

29 day of May, 2018

AMEN CORNER TOWNHOMES ASSOCIATION, INC

Bruce Langager
Bruce Langager, President

STATE OF MINNESOTA
COUNTY OF Anoka

This instrument was acknowledged before me this 29 day of May, 2018 by Bruce Langager, President of Amen Corner Townhomes Association, Inc., a nonprofit corporation, on behalf of the corporation.

Dallas Alan Paulson
Douglas Alan Paulson
Notary Public, Anoka County, Minnesota
My Commission Expires Jan 31 2020

In witness whereof said Steven Kuhl and Sandra Kuhl, husband and wife, have hereunto set their hands this

22 day of May, 2018

Steven Kuhl
Steven Kuhl

Sandra Kuhl
Sandra Kuhl

STATE OF MINNESOTA
COUNTY OF Anoka

This instrument was acknowledged before me this 22 day of May, 2018 by Steven Kuhl and Sandra Kuhl, husband and wife.

Douglas Alan Paulson
Douglas Alan Paulson
Notary Public, Anoka County, Minnesota
My Commission Expires Jan 31 2020

I Eric R. Vickaryous do hereby certify that this plat was prepared by me or under my direct supervision; that I am a duly Licensed Land Surveyor in the State of Minnesota; that this plat is a correct representation of the boundary survey; that all mathematical data and labels are correctly designated on this plat; that all monuments depicted on this plat have been, or will be correctly set within one year; that all water boundaries and wet lands, as defined in Minnesota Statutes, Section 505.01, Subd. 3, as of the date of this certificate are shown and labeled on this plat; and all public ways are shown and labeled on this plat.

Dated this 24th day of MAY, 2018.

Eric R. Vickaryous
Eric R. Vickaryous, Licensed Land Surveyor
Minnesota License Number 44125

STATE OF MINNESOTA
COUNTY OF PINE

This instrument was acknowledged before me this 24th day of MAY, 2018 by Eric R. Vickaryous.

Joan C Mizer
Joan C Mizer
Notary Public, PINE County, Minnesota
My Commission Expires Jan. 31st, 2021

CITY COUNCIL, CITY OF BLAINE, MINNESOTA

This plat of AMEN CORNER THIRD ADDITION was approved and accepted by the City Council of the City of Blaine, Minnesota at a regular meeting thereof held this 5th day of April, 2018, and said plat is in compliance with the provisions of Minnesota Statutes, Section 505.03, Subd. 2.

CITY COUNCIL, CITY OF BLAINE, MINNESOTA

By: Carly Day Mayor.

By: Chad Jensen Clerk.

—△— DENOTES RIGHT OF ACCESS AS DEDICATED PER PLAT OF AMEN CORNER

ALL MONUMENT REQUIRED BY MINNESOTA STATUTE WILL BE SET WITHIN ONE YEAR OF THE RECORDING DATE OF THIS PLAT, AND SHALL BE EVIDENCED BY A 1/2" INCH BY 14 INCH IRON PIPE MARKED BY RLS 44125.

● DENOTES FOUND MONUMENT.

○ DENOTES 1/2 INCH IRON PIPE MARKED BY LICENSE NO. 44125. ALL MONUMENT REQUIRED BY MINNESOTA STATUTE WILL BE SET WITHIN ONE YEAR OF THE RECORDING DATE OF THIS PLAT, AND SHALL BE EVIDENCED BY A 1/2" INCH BY 14 INCH IRON PIPE MARKED BY RLS 44125.

FOR THE PURPOSES OF THIS PLAT, THE NORTHERLY LINE OF OUTLOT A, AMEN CORNER SECOND ADDITION, ANOKA COUNTY, MINNESOTA, IS ASSUMED TO BEAR N89°15'21"E.

COUNTY SURVEYOR

I hereby certify that in accordance with Minnesota Statutes, Section 505.021, Subd. 11, this plat has been reviewed and approved this 29th day of May, 2018.

By: Charles F. Gitzen
Charles F. Gitzen
Anoka County Surveyor

COUNTY AUDITOR/TREASURER

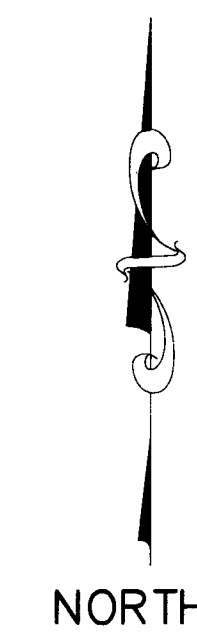
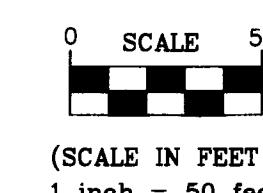
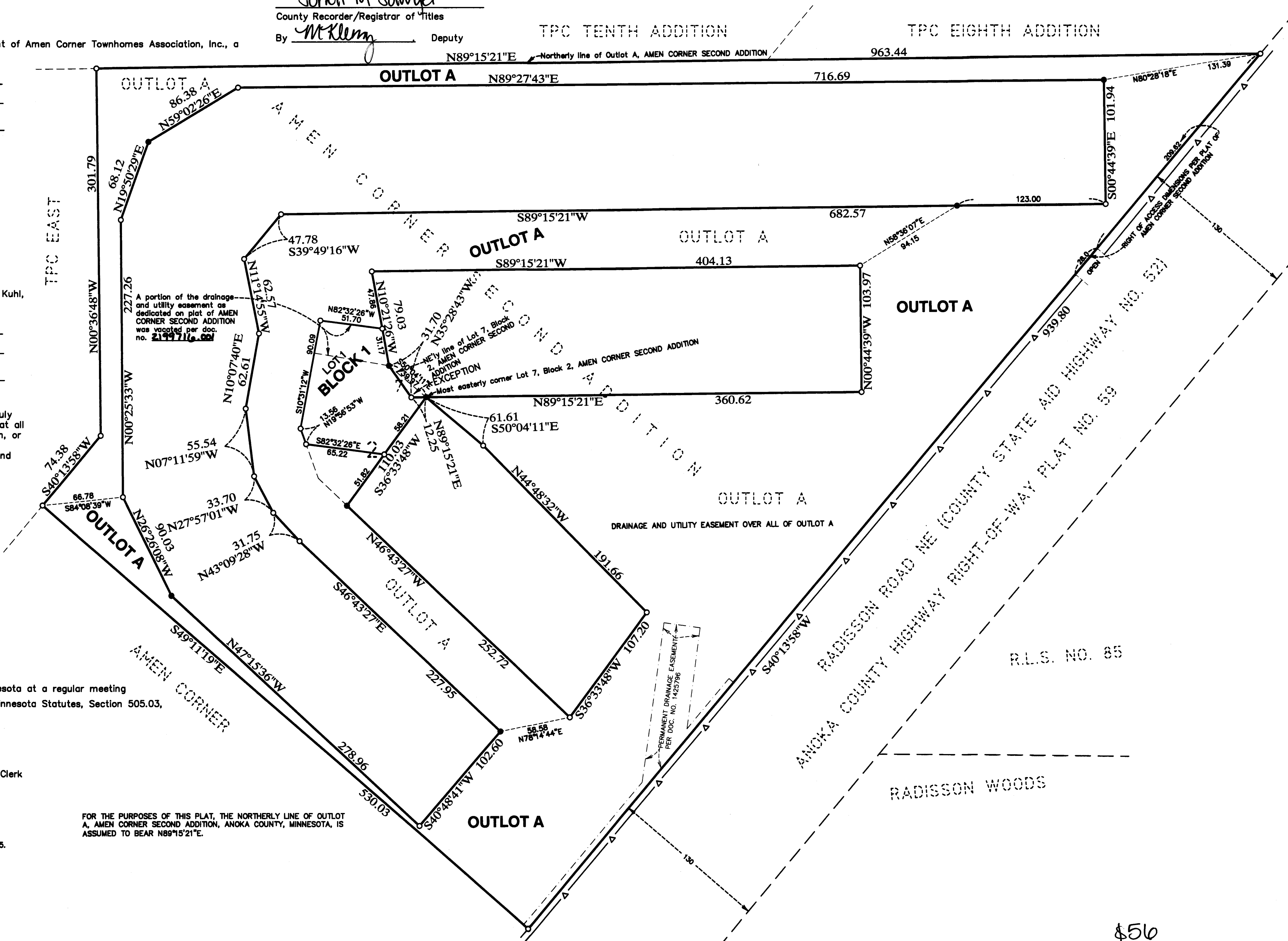
Pursuant to Minnesota Statutes, Section 505.021, Subd. 9, taxes payable in the year 2018 on the land hereinbefore described have been paid. Also, pursuant to Minnesota Statutes, Section 272.12, there are no delinquent taxes and transfer entered this 19th day of May, 2018.

Jonell M Sawyer
Property Tax Administrator
By: McKlemm Deputy

COUNTY RECORDER/REGISTRAR OF TITLES
COUNTY OF ANOKA, STATE OF MINNESOTA

I hereby certify that this plat of AMEN CORNER THIRD ADDITION was filed in the office of the County Recorder/Registrar of Titles for public record on this 29th day of May, 2018, at 3:13 o'clock P. M. and was duly recorded as Document Number 2200361.001

Jonell M Sawyer
County Recorder/Registrar of Titles
By: McKlemm Deputy



CITY OF BLAINE
COUNTY OF ANOKA
SEC. 16, TWP. 31, RNG. 23