

ANDERSON DEVELOPMENT

City of Fridley, Anoka Co., Minn.

KNOW ALL MEN BY THESE PRESENTS: That Anderson Trucking Service, Inc., a Minnesota Corporation, Fee owner of the following described property situated in the State of Minnesota County of Anoka to wit:

The Northerly 750 feet of the Easterly 720 feet of the Northeast 1/4 of the Northwest 1/4 of Section 12, Township 30, Range 24, subject to road easements on the Easterly and Northerly sides of said Northeast 1/4 of the Northwest 1/4.

Have caused the same to be surveyed and platted as ANDERSON DEVELOPMENT and do hereby donate and dedicate to the public for public use forever the Road and Avenue, and the utility and drainage easements as shown on this plat.

In witness whereof said Anderson Trucking Service, Inc. has caused these presents to be signed by its proper officers and its corporate seal to be hereunto affixed this 29th day of December, 1969, A.D. In presence of: Signed:

Harold E. Anderson and *Peggy Turch* ANDERSON TRUCKING SERVICE, INC.
Kenneth Elliason and *Peggy Turch* Harold E. Anderson, President
Kenneth Elliason, Vice President

State of Minnesota County of Stearns On this 29th day of Dec 1969, A.D., before me a notary public within and for said County and State, personally appeared Harold E. Anderson and Kenneth Elliason, to me personally known, who by me each duly sworn did say that they are respectively, President and Vice President of Anderson Trucking Service, Inc., the corporation named in the foregoing instrument, that the seal affixed to said instrument is the corporate seal of said corporation, that said instrument was signed and sealed in behalf of said corporation by authority of its board of directors, and said Harold E. Anderson and Kenneth Elliason acknowledge said instrument to be the free act and deed of said corporation.

Donna M. Hansen
Notary Public, Stearns County, Minnesota
DONNA M. HANSEN
My Commission Expires July 2, 1978

I hereby certify that I have surveyed and platted the property described in this plat as ANDERSON DEVELOPMENT; and that this plat is a correct representation of said survey; that the distances are correctly shown on the plat in feet and decimals of a foot; that all monuments have been correctly placed in the ground as shown on the plat; that the outside boundary lines are correctly designated on the plat and that there are no wetlands or public highways to be designated on said plat other than as shown thereon.

John O. Oliver
John O. Oliver, Land Surveyor, Minnesota
Registration No. 8194

Checked and approved this 29th day of December, 1969, A.D.

Roland W. Anderson
Roland W. Anderson
County Surveyor, Anoka County, Minnesota

We hereby certify that the City Council of the City of Fridley, Anoka County, Minnesota, duly accepted and approved this plat of ANDERSON DEVELOPMENT, at a regular meeting thereof held this 17th day of November, 1969, A.D.

CITY OF FRIDLEY, MINNESOTA
By: *Jack O. Kirkham* Mayor
By: *Morim Brunson* Clerk

State of Minnesota County of Sherburne

The above Surveyors certificate was subscribed and sworn to before me this 15th day of December, 1969, A.D.

I HEREBY CERTIFY THAT THE TAXES PAYABLE IN THE YEAR 1969 ON THE LANDS DESCRIBED HEREIN ARE PAID
Robert A. Peterson
Anoka County Treasurer

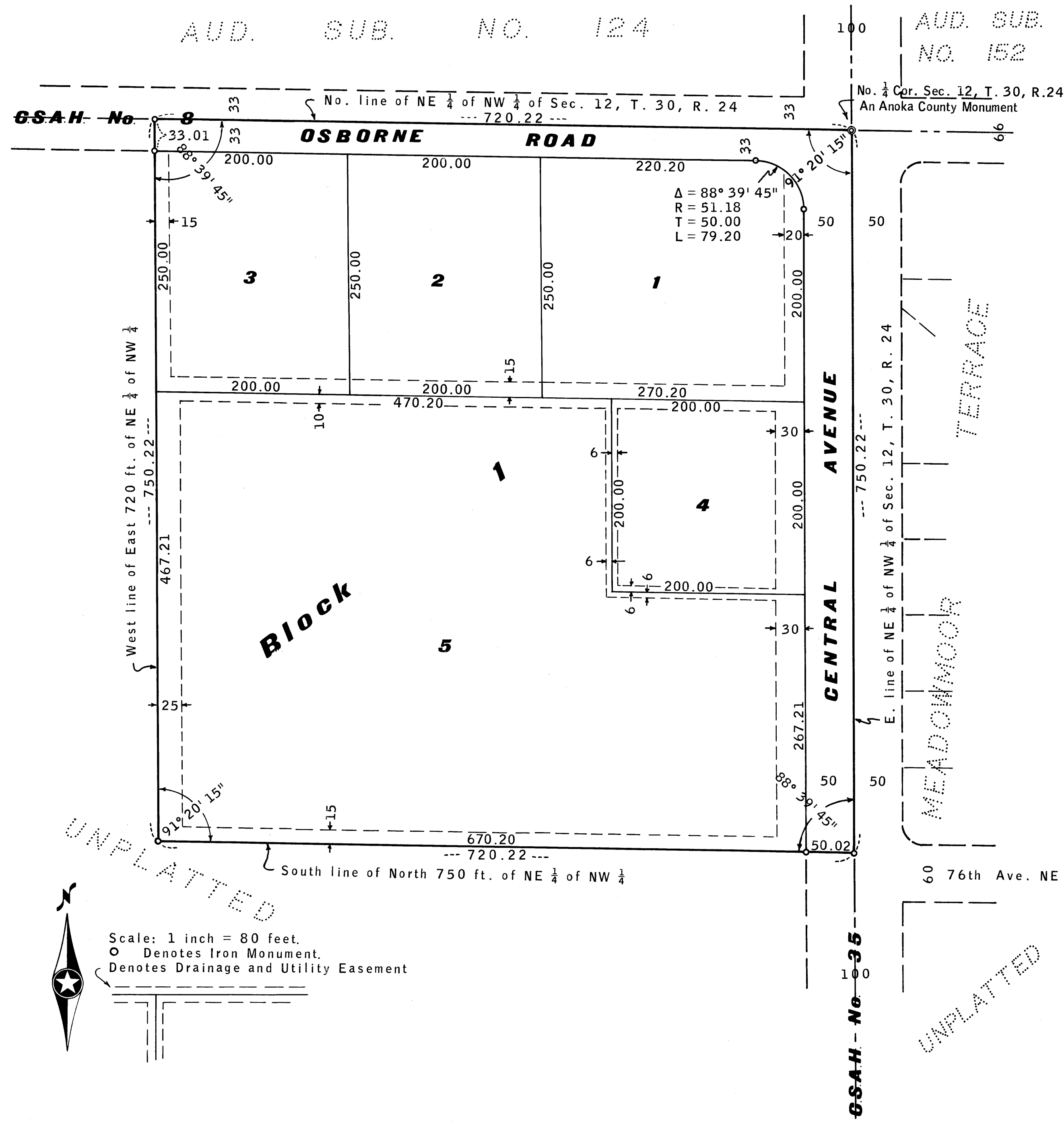
Scott Heston
Notary Public, Sherburne County, Minnesota
My Commission Expires Oct 10, 1973

331151
OFFICE OF REGISTER OF DEEDS
STATE OF MINNESOTA, COUNTY OF ANOKA } ss

I hereby certify that the within instrument was filed in this office for record on the 29th day of Dec 1969, A.D., 1969 at 4:30 o'clock P.M., and was duly recorded in book 5 of Plate page 2

TAXES PAID
This 29 day of Dec 1969
Kenneth W. Campbell
Auditor, Anoka County, Minn.
By: *Samuel W. Lyman* Deputy

Ted J. Sandahl
Register of Deeds
Margaret Russell Deputy



Scale: 1 inch = 80 feet.
O Denotes Iron Monument.
Denotes Drainage and Utility Easement

JOHN OLIVER & ASSOC., INC.
LAND SURVEYORS