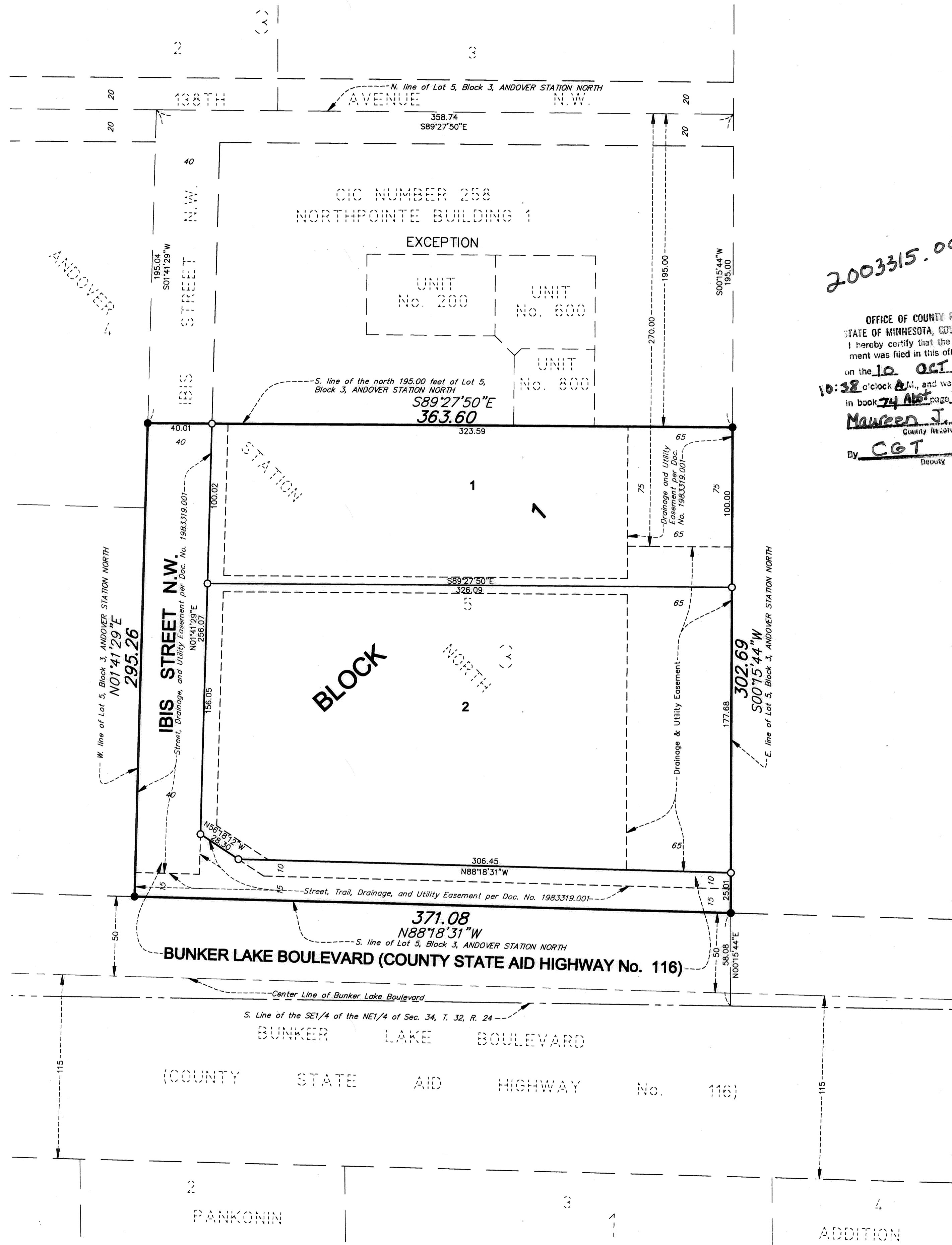


# ANDOVER STATION NORTH 2ND ADDITION

City of Andover  
County of Anoka  
Sec. 34, Twp. 32, Rge. 24

BK 74 of ABST pg 42



2003315.001

OFFICE OF COUNTY RECORDER  
STATE OF MINNESOTA, COUNTY OF ANOKA  
I hereby certify that the within instrument was filed in this office for record on the 10 OCT A.D., 2008 at 10:38 o'clock A.M., and was duly recorded in book 74 ABST page 42  
Maureen J. Devine  
County Recorder  
By CGT  
Deputy

KNOW ALL PERSONS BY THESE PRESENTS: That Andover Economic Development Authority, a body corporate and public under the laws of the State of Minnesota, fee owner of the following described property situated in the County of Anoka, State of Minnesota, to-wit:  
Lot 5, Block 3, ANDOVER STATION NORTH, according to the recorded plat thereof, Anoka County, Minnesota, Except the north 195.00 feet thereof.  
Has caused the same to be surveyed and platted as ANDOVER STATION NORTH 2ND ADDITION and does hereby donate and dedicate to the public for public use forever the public ways and drainage and utility easements as shown on the plat. In witness whereof said Andover Economic Development Authority, has caused these presents to be signed by its proper officers this 19<sup>th</sup> day of August, 2008.

ANDOVER ECONOMIC DEVELOPMENT AUTHORITY:  
Maureen J. Devine as President  
Jim Olson as Executive Director

STATE OF MINNESOTA) The foregoing instrument was acknowledged before me this 19<sup>th</sup> day of August, 2008  
COUNTY OF ANOKA) by Maureen J. Devine as President and Jim Olson as Executive Director of Andover Economic Development Authority, a body corporate and public under the laws of the State of Minnesota, on behalf of the corporation.

MICHELLE L. HARTNER  
Notary Public  
Minnesota  
My Commission Expires January 31, 2010

Michelle L. Hartner  
MICHELLE L. HARTNER  
Notary Public, ANOKA County, Minnesota  
My Commission expires 1-31-10

I hereby certify that I have surveyed and platted the land described on this plat as ANDOVER STATION NORTH 2ND ADDITION and that this plat is a correct representation of the boundary survey; that all mathematical data and labels are correctly designated on this plat; that all outside boundary monuments of this plat have been correctly set and that all other required monuments will be correctly set within one year of the recording of this plat; that as of the date of this certificate, all water boundaries and wet lands, as defined in Minnesota Statutes 505.01, Subd. 3, are shown and labeled on this plat; and that all public ways are shown and labeled on this plat.

Lyle C. Reynolds  
Lyle C. Reynolds, Registered Land Surveyor  
Minnesota License No. 13072

STATE OF MINNESOTA) The surveyors certificate was acknowledged before me a Notary Public, this 15 day of August,  
COUNTY OF ANOKA ) 2008, by Lyle C. Reynolds, Registered Land Surveyor.

Cynthia J. Morical  
Cynthia J. Morical  
Notary Public, Anoka County, Minnesota  
My Commission expires 2/15/10

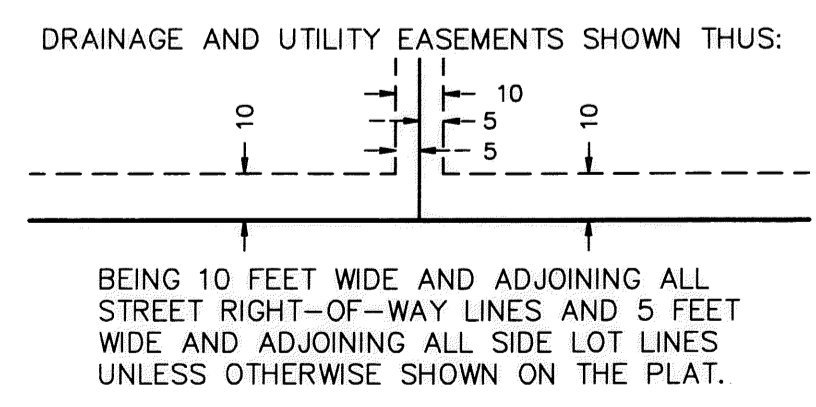
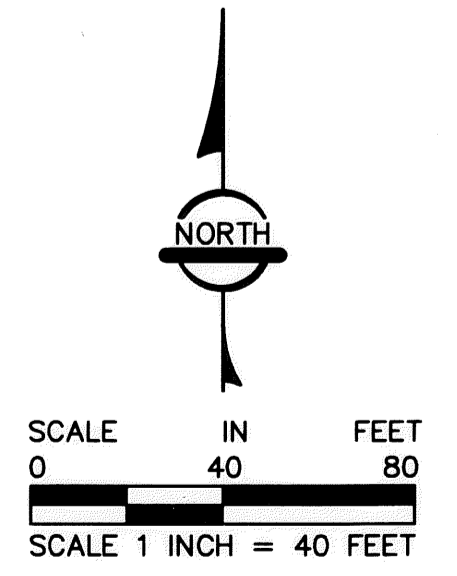
CITY OF ANDOVER  
We hereby certify that the City Council of the City of Andover, Anoka County, Minnesota, duly accepted and approved the plat of ANDOVER STATION NORTH 2ND ADDITION at a regular meeting held this 15<sup>th</sup> day of August, 2008. If applicable, the written comments and recommendations of the Commissioner of Transportation and the County Highway Engineer have been received by the city or the prescribed 30 day period has elapsed without receipt of such comments and recommendations, as provided by Minn. Statutes, Section 505.03, Subd. 2.

By Maureen J. Devine Mayor By Jim Olson Clerk

Checked and approved this 10<sup>th</sup> day of OCTOBER, 2008.

By Jerry D. Osh  
Anoka County Surveyor

I HEREBY CERTIFY THAT THE CURRENT AND DELINQUENT TAXES ON THE LANDS DESCRIBED WITHIN ARE PAID AND THE TRANSFER IS ENTERED Oct 10, 2008  
Maureen J. Devine  
PROPERTY TAX ADMINISTRATOR  
BY L. Culver  
DEPUTY PROPERTY TAX ADMINISTRATOR



- DENOTES FOUND MONUMENT.
- ALL MONUMENTS REQUIRED BY MINNESOTA STATUTE, WHETHER SHOWN ON THIS PLAT OR NOT, WILL BE SET WITHIN ONE YEAR OF THE RECORDING DATE OF THIS PLAT, AND SHALL BE EVIDENCED BY A 1/2" INCH BY 14 INCH IRON PIPE MARKED BY RLS 13072.

FOR THE PURPOSES OF THIS PLAT THE NORTH LINE OF LOT 5, BLOCK 3, ANDOVER STATION NORTH, ANOKA COUNTY, MINNESOTA, IS ASSUMED TO BEAR S89°27'50"E

\$56.00

