

ANOKA ENTERPRISE PARK EIGHTH ADDITION

CITY OF ANOKA
COUNTY OF ANOKA
SECTION 36, T. 32, R. 25
Book 20 of Towns Page 27

KNOW ALL PERSONS BY THESE PRESENTS that the City of Anoka, a Minnesota Municipal Corporation, fee owner of the following described property situated in the County of Anoka, State of Minnesota to wit:

Outlot A, ANOKA ENTERPRISE PARK FOURTH ADDITION, Anoka County, Minnesota.

Has caused the same to be surveyed and platted as ANOKA ENTERPRISE PARK EIGHTH ADDITION and does hereby donate and dedicate to the public the drainage and utility easements as shown on this plat. In witness whereof said City of Anoka, a Minnesota Municipal Corporation, has caused these presents to be signed by its Mayor and City Clerk, and its corporate seal to be hereunto affixed this 19th day of July, 2006.

CITY OF ANOKA
Bjorn Skogquist
Bjorn Skogquist, Mayor

Amy Oehlers
Amy Oehlers, as City Clerk

I HEREBY CERTIFY THAT THE CURRENT AND DELINQUENT TAXES ON THE LANDS DESCRIBED WITHIN ARE PAID AND THE TRANSFER IS ENTERED Aug. 3, 2006
MAURIN J. DEWINE
PROPERTY TAX ADMINISTRATOR
BY: *S. Culver*
DEPUTY PROPERTY TAX ADMINISTRATOR

STATE OF MINNESOTA
COUNTY OF Anoka

The foregoing instrument was acknowledged before me this 19th day of July, 2006, by Bjorn Skogquist, as Mayor, and Amy Oehlers, as City Clerk, of the City of Anoka, a Minnesota Municipal Corporation, on behalf of the Municipal Corporation.

Pam C. Bowman
PAM C. BOWMAN
NOTARY PUBLIC-MINNESOTA
My Commission Expires Jan. 31, 2010

Pam C. Bowman
Notary Public, Minnesota
My Commission Expires January 31, 2010.

I hereby certify that I have surveyed and platted the land described on this plat as ANOKA ENTERPRISE PARK EIGHTH ADDITION; that this plat is a correct representation of said survey; that all distances are correctly shown on said plat in feet and hundredths of a foot; that all monuments have been correctly placed in the ground as shown on said plat or will be placed as required by the local government unit as designated on said plat; that the outside boundary lines are correctly designated on said plat; and that there are no wetlands as defined in MS 505.02, subd. 1, or public highways to be designated other than as shown.

Charles R. Christopherson
Charles R. Christopherson, Land Surveyor
Minnesota Registration No. 18420

498524.001

STATE OF MINNESOTA
COUNTY OF ANOKA

The foregoing instrument was acknowledged before me this 11th day of July, 2006, by Charles R. Christopherson, Land Surveyor.

Michelle L. Ecklund
MICHELLE L. ECKLUND
Notary Public-Minnesota
My Commission Expires Jan 31, 2010

Michelle L. Ecklund
Notary Public, Minnesota
My Commission Expires January 31, 2010.

Office of REGISTRAR OF TITLES
STATE OF MINNESOTA
COUNTY OF ANOKA
I hereby certify that the within instrument was filed in this office on 8-3-06 at 9:02 o'clock AM
Maurin J. Dewine, Registrar of Titles
by: *TAP*
Deputy Registrar of Titles

This plat of ANOKA ENTERPRISE PARK EIGHTH ADDITION was approved by the Planning Commission of the City of Anoka, Minnesota this 2nd day of May, 2006.

Alan M. Fitzgerald
Chairman

Carolyn J. Brown
Secretary

CITY OF ANOKA

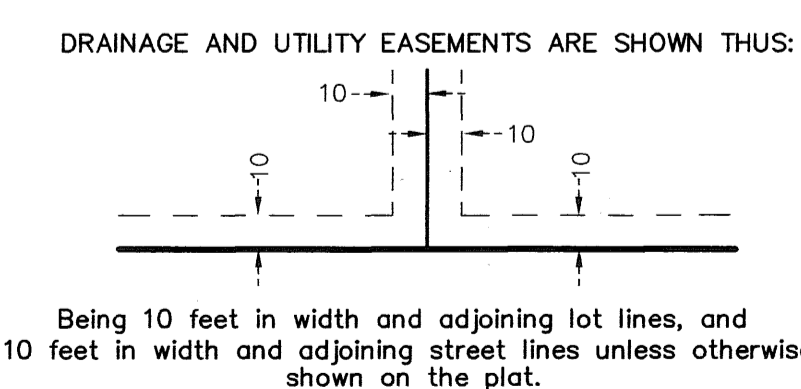
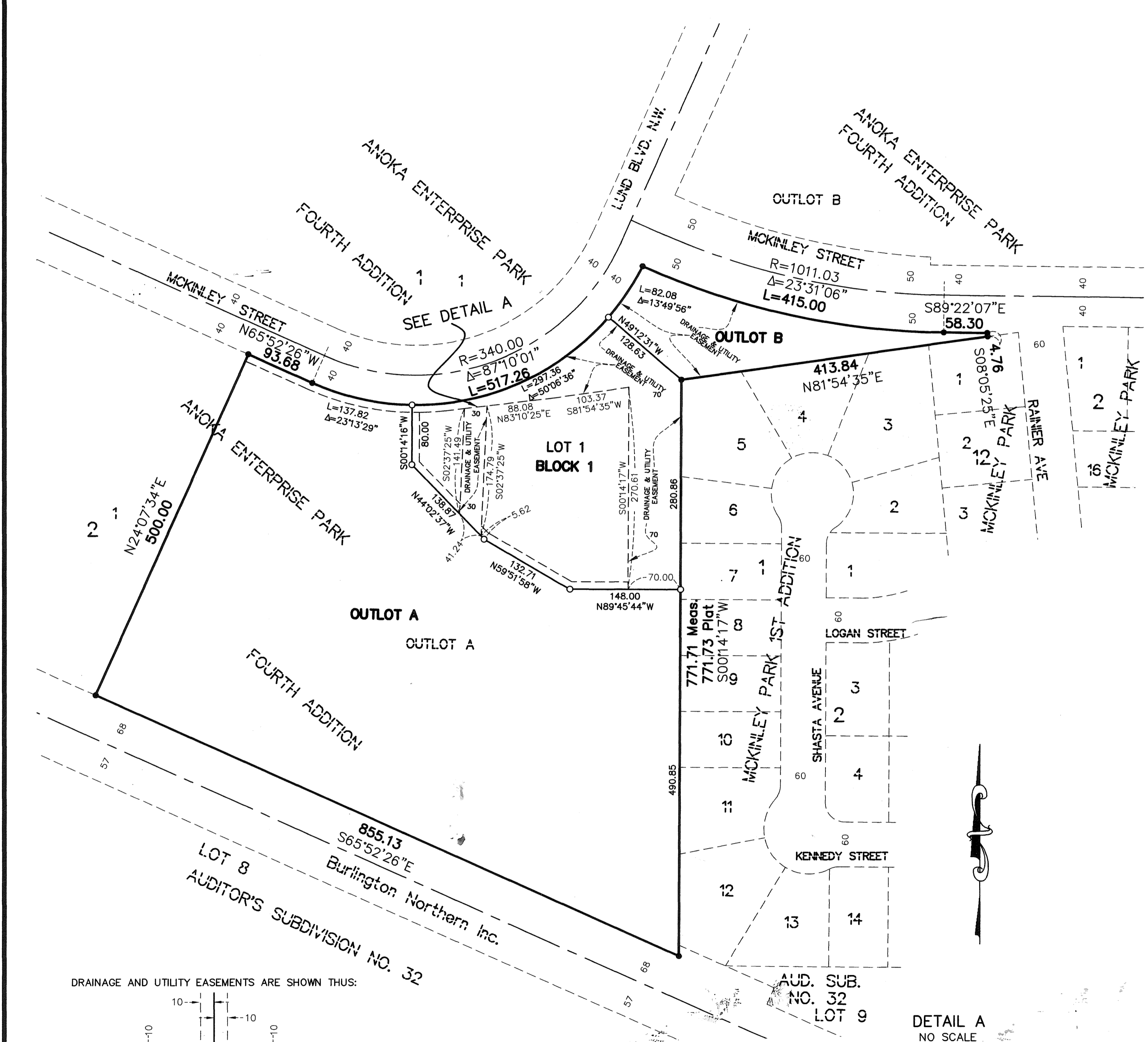
We hereby certify that the City Council of Anoka, Anoka County, Minnesota, duly accepted and approved the plat of ANOKA ENTERPRISE PARK EIGHTH ADDITION at a regular meeting thereof held this 11th day of July, 2006. If applicable, the written comments and recommendations of the commissioner of Transportation and the County Highway Engineer have been received by the City or the prescribed 30 day period has elapsed without receipt of such comments and recommendations, as provided by Minn. Statutes, Section 505.03, Subd. 2.

Bjorn Skogquist
Bjorn Skogquist, as Mayor

Amy Oehlers
Amy Oehlers, as City Clerk

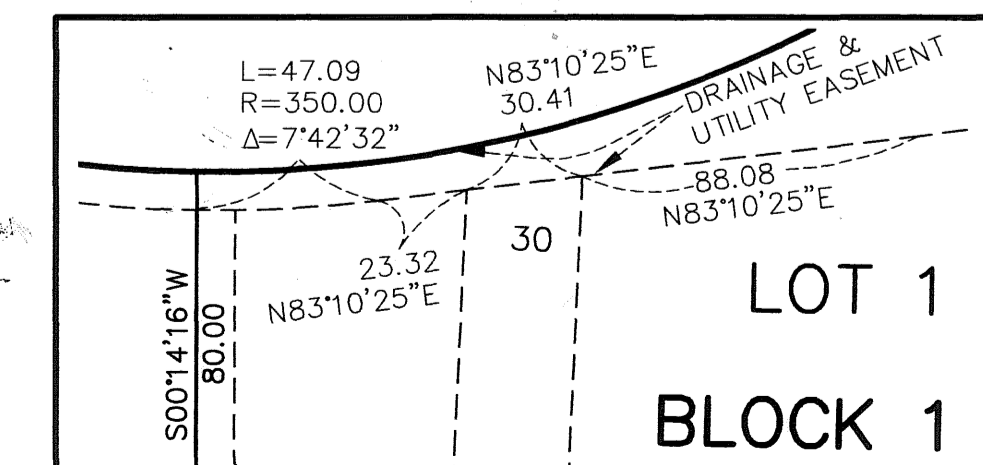
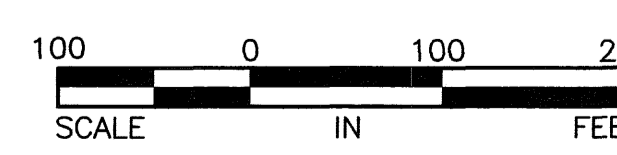
This plat of ANOKA ENTERPRISE PARK EIGHTH ADDITION was checked and approved by me this 3rd day of August, 2006.

Larry D. Holium
Larry Holium, Anoka County Surveyor



Being 10 feet in width and adjoining lot lines, and 10 feet in width and adjoining street lines unless otherwise shown on the plat.

- Denotes 1/2 inch by 14 inch iron monument set and marked with Minnesota License No. 18420.
- Denotes iron monument found



For the purposes of this plat the most southerly line of Outlot A, ANOKA ENTERPRISE PARK FOURTH ADDITION, is assumed to bear S 65°52'26" E.

\$56.00

