

ANOKA HENNEPIN 3RD ADDITION

CITY OF BLAINE
COUNTY OF ANOKA
SEC. 1, T. 31, R. 23

KNOW ALL PERSONS BY THESE PRESENTS: That Anoka-Hennepin Independent School District No. 11, a Political Subdivision, State of Minnesota, owner of the following described property:

The Southeast Quarter of the Southwest Quarter of Section 1, Township 31, Range 23, Anoka County, Minnesota.

Except Parcel 2 of Anoka County Highway Right-of-Way Plat No. 50

Has caused the same to be surveyed and platted as ANOKA HENNEPIN 3RD ADDITION and does hereby dedicate to the public for public use the public ways and the drainage and utility easements as created by this plat. Also dedicating to the County of Anoka the right of access onto County State Aid Highway No. 14 as shown on this plat.

In witness whereof said Anoka-Hennepin Independent School District No. 11, a Political Subdivision, State of Minnesota, has caused these presents to be signed by its proper officers this 21st day of September, 2018.

SIGNED: Anoka-Hennepin Independent School District No. 11

Thomas He as chair

Tom Heidemann
Print Name

J. Paul Simon as clerk

Jeff Simon
Print Name

STATE OF MINNESOTA

COUNTY OF Anoka

This instrument was acknowledged before me on 21st day of September, 2018 by Tom Heidemann Chair and Jeff Simon Clerk of Anoka-Hennepin Independent School District No. 11, a Political Subdivision, State of Minnesota, on behalf of the Subdivision.

Debra Koffsky
Notary Public, Anoka County, Minnesota
My Commission Expires 01-31-2021

I Arlee J. Carlson do hereby certify that this plat was prepared by me or under my direct supervision; that I am a duly Licensed Land Surveyor in the State of Minnesota; that this plat is a correct representation of the boundary survey; that all mathematical data and labels are correctly designated on this plat; that all monuments depicted on this plat have been, or will be correctly set within one year; that all water boundaries and wet lands, as defined in Minnesota Statutes, Section 505.01, Subd. 3, as of the date of this certificate are shown and labeled on this plat; and all public ways are shown and labeled on this plat.

Dated this 18th day of September, 2018

Arlee J. Carlson
Arlee J. Carlson, Licensed Land Surveyor
Minnesota License No. 44900

STATE OF MINNESOTA

COUNTY OF Hennepin

This instrument was acknowledged before me this 18th day of September, 2018 by Arlee J. Carlson.

Laura J. Swift
Laura J. Swift
Notary Public, Hennepin County, Minnesota
My Commission Expires January 31, 2022

CITY COUNCIL, CITY OF BLAINE, MINNESOTA

This plat of ANOKA HENNEPIN 3RD ADDITION was approved and accepted by the City Council of the City of Blaine, Minnesota at a regular meeting thereof held this 12th day of July, 2018 and said plat is in compliance with the provisions of Minnesota Statutes, Section 505.03, Subd. 2.

City Council, City of Blaine, Minnesota

By: Ken Ryan Mayor

By: Cal Coffey Clerk

ANOKA COUNTY SURVEYOR

I hereby certify that in accordance with Minnesota Statutes, Section 505.021, Subd. 11, this plat has been reviewed and approved this 1st day of October, 2018.

Charles F. Gitzen
Charles F. Gitzen
Anoka County Surveyor

ANOKA COUNTY AUDITOR/TREASURER

Pursuant to Minnesota Statutes, Section 505.021, Subd. 9, taxes payable in the year 2018 on the land hereinbefore described have been paid. Also, pursuant to Minnesota Statutes, Section 272.12, there are no delinquent taxes and transfer entered this 3 day of October, 2018.

Jonell M. Sawyer
Property Tax Administrator

By: Jonell M. Sawyer Deputy

ANOKA COUNTY RECORDER/REGISTRAR OF TITLES

County of Anoka, State of Minnesota

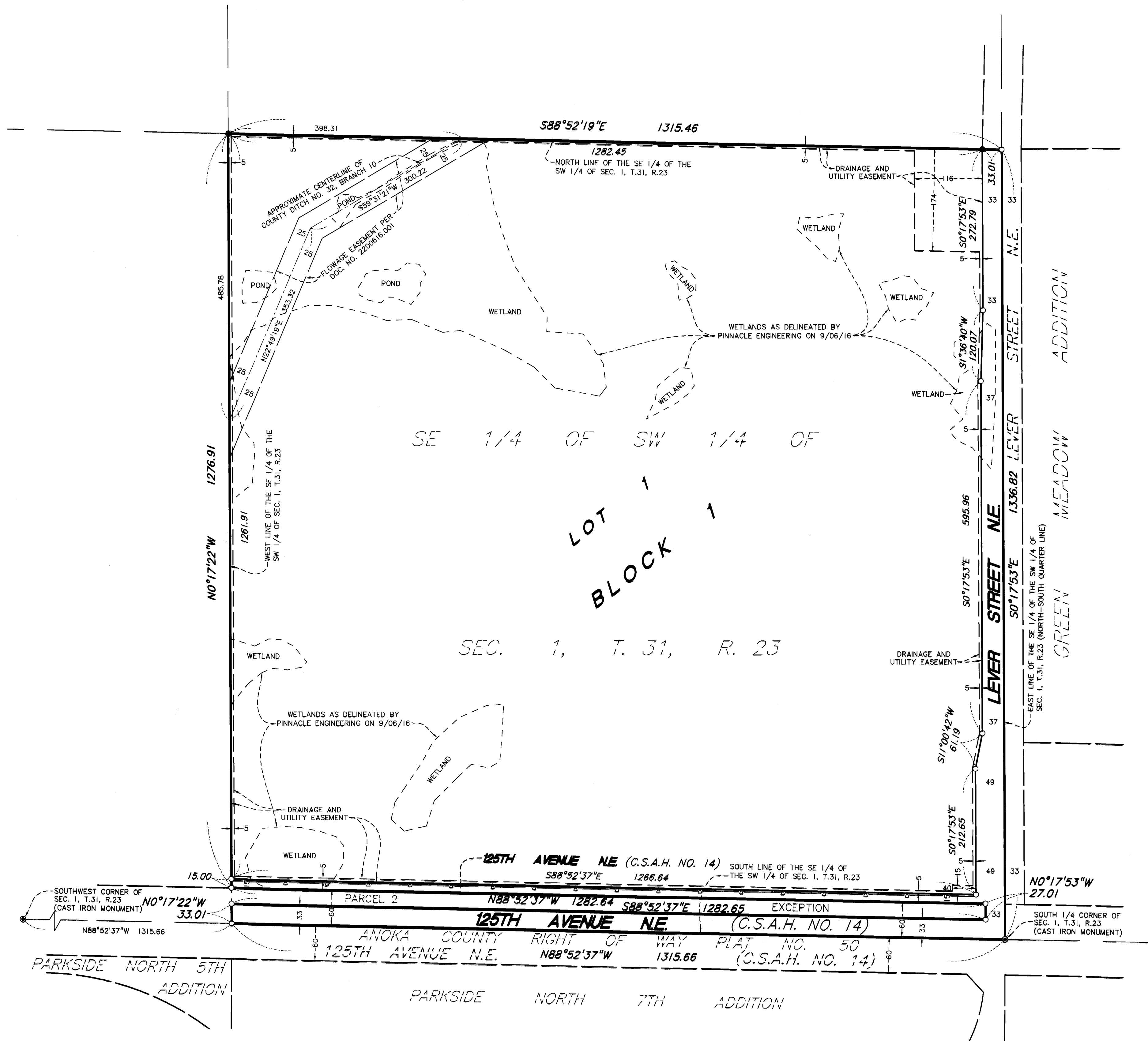
I hereby certify that this plat of ANOKA HENNEPIN 3RD ADDITION was filed in the office of the County Recorder/Registrar of Titles for public record on this 3 day of October, 2018, at 3:45 o'clock P.M. and was duly recorded as Document Number 2210604.002

Jonell M. Sawyer
County Recorder/Registrar of Titles

By: Jonell M. Sawyer Deputy

ANOKA HENNEPIN 3RD ADDITION

CITY OF BLAINE
COUNTY OF ANOKA
SEC. 1, T. 31, R. 23



- DENOTES ANOKA COUNTY CAST IRON MONUMENT
- DENOTES 1/2 INCH BY 16 INCH IRON PIPE WITH PLASTIC CAP INSCRIBED PLS 44900
- DENOTES FOUND 1/2 INCH IRON MONUMENT MARKED WITH RLS 41578, UNLESS OTHERWISE NOTED.
- ▲— DENOTES RIGHT OF ACCESS DEDICATED TO ANOKA COUNTY

FOR THE PURPOSES OF THIS PLAT, THE SOUTH LINE OF THE SE 1/4 OF THE SW 1/4 OF SECTION 1, TOWNSHIP 31, RANGE 23 IS ASSUMED TO HAVE A BEARING OF NORTH 88 DEGREES 52 MINUTES 37 SECONDS WEST

