

# ANOKA MEADOWS THIRD ADDITION

## CITY OF ANOKA, COUNTY OF ANOKA

KNOW ALL MEN BY THESE PRESENTS: That Good Value Homes, Inc., a Minnesota corporation, owner and proprietor, and Central Investment Corporation, a Minnesota corporation, mortgagee, of the following described property situate in the County of Anoka, State of Minnesota, to wit:

OUTLOTS A and B, ANOKA MEADOWS SECOND ADDITION; Together with, The North 60.00 feet of the South 195.00 feet of the West 947.00 feet of the East 1147.00 feet of the Southeast Quarter of the Southwest Quarter of Section 32, Township 32, Range 24, lying easterly of the easterly line of CLEVELAND ST., as dedicated in the plat of ANOKA MEADOWS SECOND ADDITION.

Have caused the same to be surveyed and platted as ANOKA MEADOWS THIRD ADDITION and do hereby donate and dedicate to the public for the public use forever the drainage and utility easements as shown on the plat. In witness whereof, said Good Value Homes, Inc. has caused these presents to be signed by its proper officers this 14<sup>th</sup> day of April, 1987. Also in witness whereof said Central Investment Corporation has caused these presents to be signed by its proper officers this 5<sup>th</sup> day of April, 1987.

Signed: Good Value Homes, Inc.:  
Betty R. Hardle  
Betty R. Hardle, Chief Executive Officer  
Donald L. Hardle  
Donald L. Hardle, President

State of Minnesota  
County of Anoka  
The foregoing instrument was acknowledged before me this 14<sup>th</sup> day of April, 1987 by Betty R. Hardle, Chief Executive Officer, and Donald L. Hardle, President, of Good Value Homes, Inc., a Minnesota corporation, on behalf of the corporation.

Lavonna C. Newstrom  
Notary Public, Anoka County, Minnesota  
My commission expires January 01, 1992

Signed: Central Investment Corporation:  
J. J. Maeder  
J. J. Maeder, Vice President  
R. W. Ruettimann  
R. W. Ruettimann, Secretary

State of Minnesota  
County of Anoka  
The foregoing instrument was acknowledged before me this 15<sup>th</sup> day of April, 1987 by J. J. Maeder, Vice President, and R. W. Ruettimann, Secretary, of Central Investment Corporation, a Minnesota corporation, on behalf of the corporation.

Lavonna C. Newstrom  
Notary Public, Anoka County, Minnesota  
My commission expires January 01, 1992

I hereby certify that I have surveyed and platted the property described on this plat as ANOKA MEADOWS THIRD ADDITION; that this plat is a correct representation of said survey; that all distances are correctly shown in feet and hundredths of a foot; that all monuments have been correctly placed in the ground as shown; and that the outside boundary lines are correctly designated on said plat; and that there are no wet lands or public highways to be designated other than as shown.

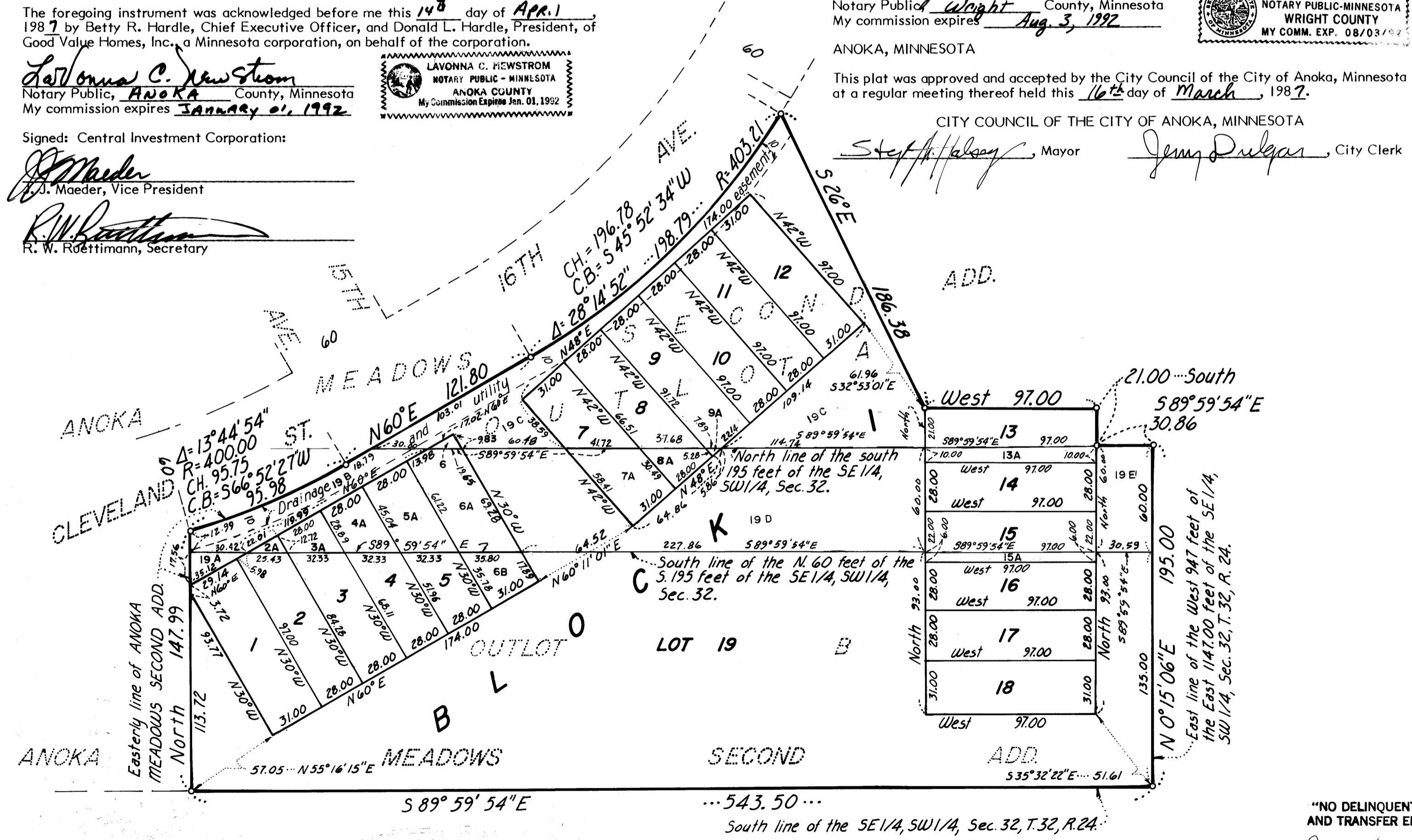
Richard H. Cherrier  
Richard H. Cherrier, Land Surveyor  
Minnesota Registration Number 9064

State of Minnesota  
County of Wright  
The foregoing Surveyor's Certificate was acknowledged before me this 23<sup>rd</sup> day of February, 1987, by Richard H. Cherrier, Land Surveyor.

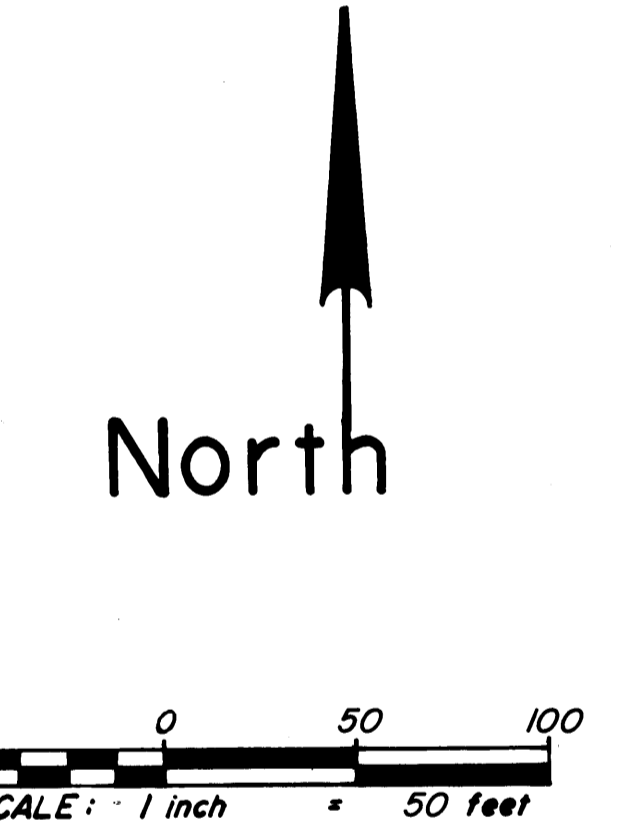
Tony Ellestad  
Notary Public, Wright County, Minnesota  
My commission expires Aug. 3, 1992

ANOKA, MINNESOTA  
This plat was approved and accepted by the City Council of the City of Anoka, Minnesota at a regular meeting thereof held this 16<sup>th</sup> day of March, 1987.

CITY COUNCIL OF THE CITY OF ANOKA, MINNESOTA  
Steph H. Halasy, Mayor     Jimmy Dulgas, City Clerk



ANOKA, MINNESOTA  
This plat of ANOKA MEADOWS THIRD ADDITION was approved and accepted by the City Planning Commission of Anoka, Minnesota at a regular meeting thereof held this 2<sup>nd</sup> day of June, 1987.  
PLANNING COMMISSION OF THE CITY OF ANOKA, MINNESOTA.  
Geo T. Foley, Chairman  
ANOKA COUNTY SURVEYOR  
This plat was checked and approved on this 3<sup>rd</sup> day of June, 1987.  
M. D. ...  
County Surveyor, Anoka County, Minnesota



o DENOTES IRON MONUMENT  
FOR THE PURPOSES OF THIS PLAT THE EAST LINE OF THE SE 1/4 OF THE SW 1/4, SECTION 32, T.32, R.24, IS ASSUMED TO BEAR N0°15'06\"/>

163834

“NO DELINQUENT TAXES AND TRANSFER ENTERED”  
June 4 1987  
Charles R. ...  
Auditor, Anoka County  
BY Shirley Schmitt  
Deputy

Office of REGISTRAR OF TITLES  
STATE OF MINNESOTA  
COUNTY OF ANOKA  
I hereby certify that the within instrument was filed in this office on the 4<sup>th</sup> day of June, 1987, at 2:30 o'clock P.M.  
Paul ...  
DEPUTY REGISTRAR OF TITLES

I HEREBY CERTIFY THAT THE TAXES PAYABLE IN THE YEAR 1987 ON THE LANDS DESCRIBED WITHIN ARE PAID  
Donald C. Bailey  
Anoka County Treasurer

762739  
OFFICE OF COUNTY RECORDER  
STATE OF MINNESOTA, COUNTY OF ANOKA  
I hereby certify that the within instrument was filed in this office for record on the JUN 4 1987 A.D., 1987 at 2:30 o'clock P.M. and was duly recorded in book 37 of Plat page 45  
Red ...  
County Recorder  
By Ad Swanson  
Deputy

**CHERRIER-WINTER & ASSOCIATES INC.**  
REGISTERED PROFESSIONAL LAND SURVEYORS