

# ANOKA TRANSIT VILLAGE SOUTH SECOND ADDITION

CITY OF ANOKA  
COUNTY OF ANOKA  
SEC. 6, T. 31, R. 24  
Book 78 Abstract Page 47

KNOW ALL PERSONS BY THESE PRESENTS: That the City of Anoka, a Minnesota Municipal Corporation under the laws of the State of Minnesota, owner of the following described property:

Lots 2, 2A, 2C, and Lot 3, all in Block 1, ANOKA TRANSIT VILLAGE SOUTH, Anoka County, Minnesota.

And

Lot 2B, Block 1, ANOKA TRANSIT VILLAGE SOUTH, Anoka County, Minnesota.

Has caused the same to be surveyed and platted as ANOKA TRANSIT VILLAGE SOUTH SECOND ADDITION and does hereby dedicate to the public for public use the drainage and utility easements as shown on this plat.

In witness whereof said City of Anoka, a Minnesota Municipal Corporation under the laws of the State of Minnesota, has caused these presents to be signed by its proper officers this 14<sup>th</sup> day of June, 2014.

CITY OF ANOKA

Phil Rice, as Mayor

*Amy T. Oehler*  
Amy T. Oehler, as City Clerk

STATE OF MINNESOTA  
COUNTY OF ANOKA

This instrument was acknowledged before me this 16<sup>th</sup> day of June, 2014 by Phil Rice, as Mayor, and Amy T. Oehler, as City Clerk, of the City of Anoka, a Minnesota Municipal Corporation under the laws of the State of Minnesota, on behalf of the corporation.

*Marilyn Martin*  
Marilyn Martin  
Notary Public, Minnesota  
My commission expires January 31, 2015

I Charles R. Christopherson do hereby certify that this plat was prepared by me or under my direct supervision; that I am a duly Licensed Land Surveyor in the State of Minnesota; that this plat is a correct representation of the boundary survey; that all mathematical data and labels are correctly designated on this plat; that all monuments depicted on this plat have been, or will be correctly set within one year; that all water boundaries and wet lands, as defined in Minnesota Statutes, Section 505.01, Subd. 3, as of the date of this certificate are shown and labeled on this plat; and all public ways are shown and labeled on this plat.

Dated this 4<sup>th</sup> day of June, 2014.

*Charles R. Christopherson*  
Charles R. Christopherson, Licensed Land Surveyor  
Minnesota License No. 18420

STATE OF MINNESOTA  
COUNTY OF ANOKA

This instrument was acknowledged before me this 4<sup>th</sup> day of June, 2014 by Charles R. Christopherson.

*Seth M. Monroe*  
Seth M. Monroe  
Notary Public, Minnesota  
My commission expires January 31, 2019

City Council, City of Anoka, Minnesota

This plat of ANOKA TRANSIT VILLAGE SOUTH SECOND ADDITION was approved and accepted by the City Council of the City of Anoka, Minnesota at a regular meeting thereof held this 2<sup>nd</sup> day of April, 2014, and said plat is in compliance with the provisions of Minnesota Statutes, Section 505.03, Subd. 2.

City Council, City of Anoka, Minnesota

By: *Phil Rice*, Mayor

By: *Amy T. Oehler*, Clerk

Anoka Planning Commission

Be it known that at a meeting held on this 1<sup>st</sup> day of April, 2014, the Planning Commission of the City of Anoka, Minnesota, did hereby review and approve this plat of ANOKA TRANSIT VILLAGE SOUTH SECOND ADDITION.

Planning Commission, City of Anoka, Minnesota

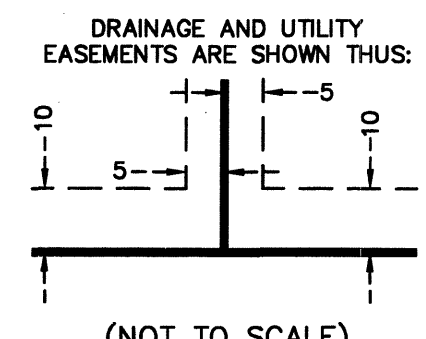
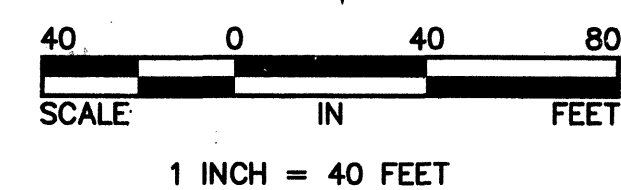
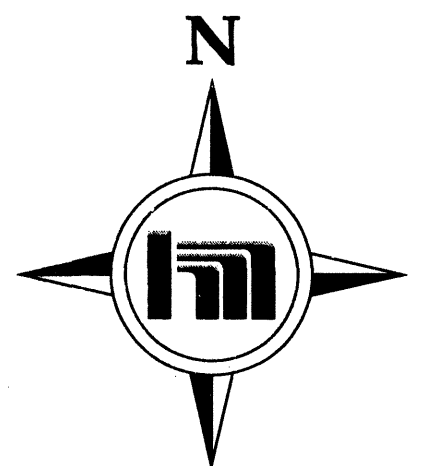
By: *Crystal Pummer*, Chairman

By: *Crystal Pummer*, Secretary

ANOKA COUNTY SURVEYOR

I hereby certify that in accordance with Minnesota Statutes, Section 505.021, Subd. 11, this plat has been reviewed and approved this 9<sup>th</sup> day of July, 2014.

*Larry D. Holm*  
Larry D. Holm  
Anoka County Surveyor

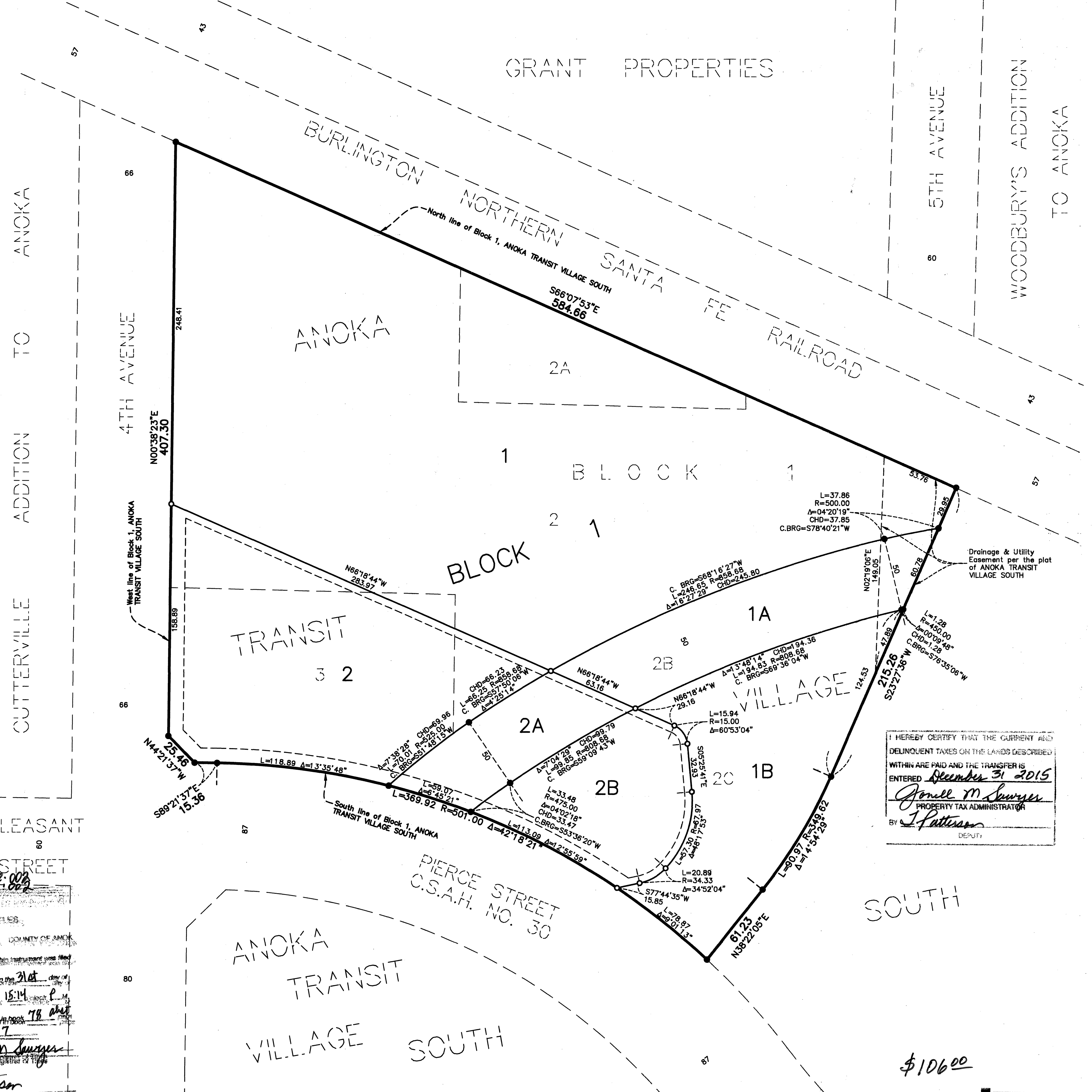


Being 10.00 feet in width and adjoining all right of way lines unless otherwise shown on this plat and being 5.00 feet in width and adjoining all side and rear lot lines unless otherwise shown on this plat.

For the purposes of this plat the West line of Block 1, ANOKA TRANSIT VILLAGE SOUTH is assumed to bear N00°38'23"E.

- Denotes 1/2 inch by 14 inch iron monument set and marked with Minnesota License No. 18420.
- Denotes found iron monument

212 1676 002  
535 745 002  
STATE OF MINNESOTA COUNTY OF ANOKA  
I hereby certify that this plat was prepared by me or under my direct supervision and that I am a duly Licensed Land Surveyor in the State of Minnesota; that this plat is a correct representation of the boundary survey; that all mathematical data and labels are correctly designated on this plat; that all monuments depicted on this plat have been, or will be correctly set within one year; that all water boundaries and wet lands, as defined in Minnesota Statutes, Section 505.01, Subd. 3, as of the date of this certificate are shown and labeled on this plat; and all public ways are shown and labeled on this plat.  
December 15<sup>th</sup> 2014  
Page 47  
*Jonell M. Swanson*  
Jonell M. Swanson  
By: *J. Patterson*



I HEREBY CERTIFY THAT THE CURRENT AND DELINQUENT TAXES ON THE LANDS DESCRIBED WITHIN ARE PAID AND THE TRANSFER IS ENTERED December 31 2015  
*Jonell M. Swanson*  
PROPERTY TAX ADMINISTRATOR  
By: *J. Patterson*  
DEPUTY

\$106.00

