

# ANTHONY OAKS

CITY OF COON RAPIDS

COUNTY OF ANOKA

KNOW ALL PERSONS BY THESE PRESENTS: That Eugene A. Koch and Alma Koch, husband and wife, owners and proprietors and First Bank Coon Rapids, a Minnesota Corporation, mortgagee of the following described property situated in the County of Anoka, State of Minnesota, to-wit:

The South Half of the Southwest Quarter of the Southeast Quarter of the Northwest Quarter of Section 3, Township 31, Range 24, being part of Lot 13, Auditor's Subdivision No. 98, Anoka County, Minnesota, except that part described as follows: The south 643.50 feet of the north 1320.00 feet of the west 165.00 feet of the Southeast Quarter of the Northwest Quarter of said Section 3.

Have caused the same to be surveyed and platted as ANTHONY OAKS and do hereby donate and dedicate to the public for public use forever the Avenue, Lane and the drainage and utility easements as shown on this plat. In witness whereof said Eugene A. Koch and Alma Koch, husband and wife, have hereunto set their hands this 7<sup>th</sup> day of August, 1985. Also in witness whereof said First Bank Coon Rapids, a Minnesota Corporation, has caused these presents to be signed by its proper officer this 4<sup>th</sup> day of August, 1985.

SIGNED: Eugene A. Koch Eugene A. Koch Alma Koch Alma Koch

By Jerry Wright Title President

STATE OF MINNESOTA COUNTY OF ANOKA The foregoing instrument was acknowledged before me this 7<sup>th</sup> day of August, 1985, by Eugene A. Koch and Alma Koch, husband and wife. Dana R. Ferry Notary Public, Anoka County, Minnesota My Commission expires 12/23/88

STATE OF MINNESOTA COUNTY OF ANOKA The foregoing instrument was acknowledged before me this 7<sup>th</sup> day of August, 1985, by Jerry Wright President of First Bank Coon Rapids, a Minnesota Corporation, on behalf of the corporation. Allen J. Bloom Notary Public, Anoka County, Minnesota My Commission expires Apr. 24, 1991

I hereby certify that I have surveyed and platted the land described in the dedication on this plat as ANTHONY OAKS; that the plat is a correct representation of said survey; that all distances are correctly shown on said plat in feet and hundredths of a foot; that the monuments have been correctly placed in the ground as shown; that the outside boundaries are correctly designated on said plat; and that there are no wet lands or public highways to be designated on said plat other than as shown thereon.

Jeffrey N. Caine Registered Land Surveyor, Minn. Reg. No. 12251

STATE OF MINNESOTA COUNTY OF ANOKA The surveyors certificate was acknowledged before me, a Notary Public, this 3<sup>rd</sup> day of August, 1985, by Jeffrey N. Caine, Land Surveyor. Nancy S. Caine Notary Public, Anoka County, Minnesota My Commission expires July 23, 1986

The annexed plat of ANTHONY OAKS was approved by the Planning Commission of the City of Coon Rapids, Minnesota at a regular meeting thereof held this 21<sup>st</sup> day of February, 1985.

By Donna M. Naue Chairman By Donald G. Zopf Secretary

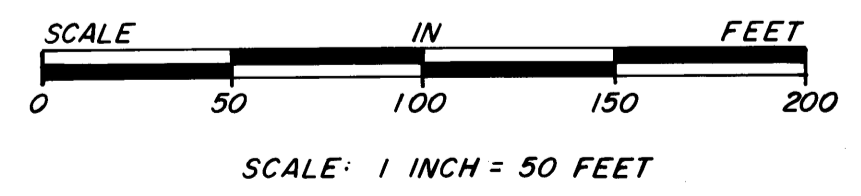
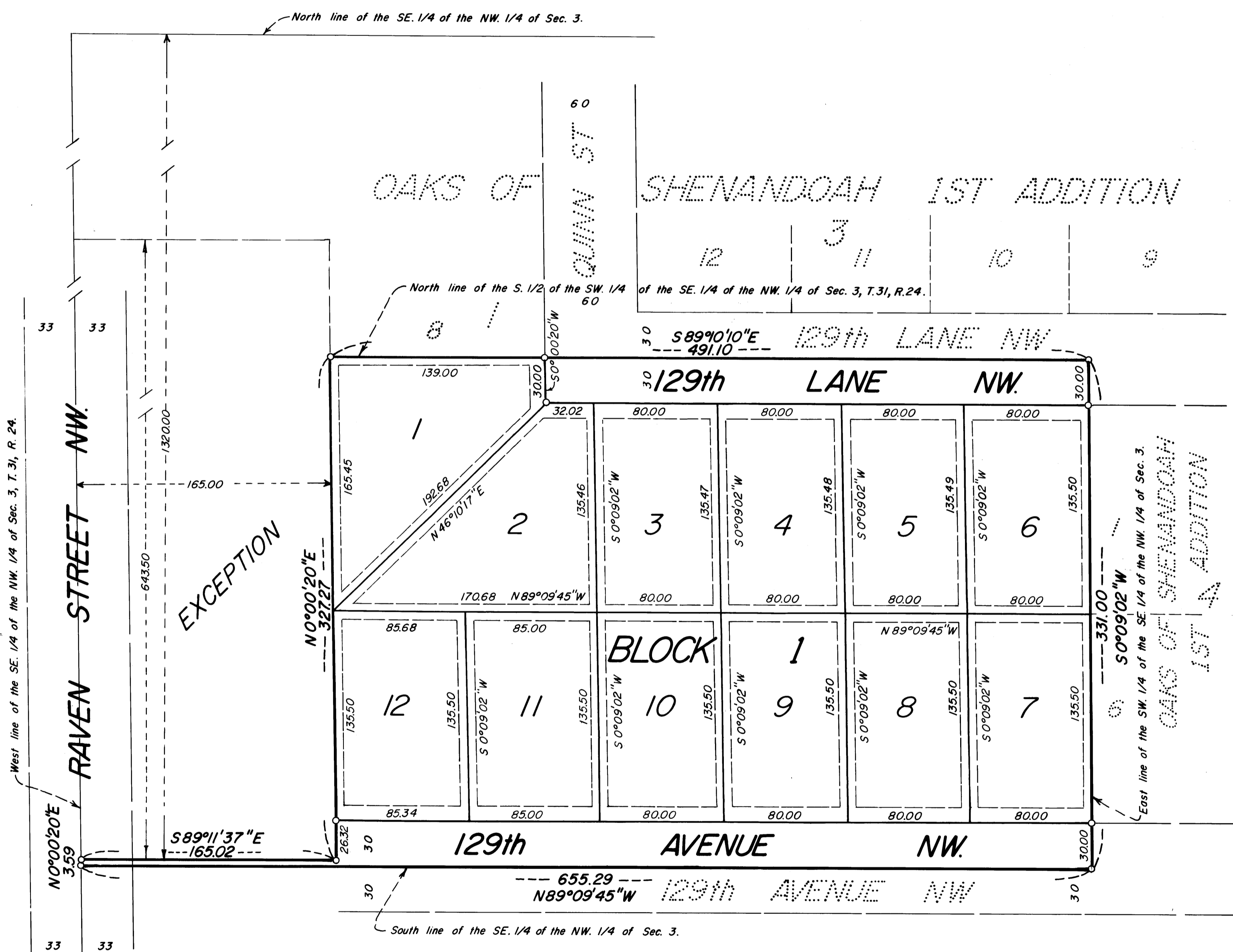
The annexed plat of ANTHONY OAKS was approved by the City Council of Coon Rapids, Minnesota at a regular meeting thereof held this 6<sup>th</sup> day of August, 1985.

By Robert B. Lewis Mayor By Betty Backes, CMC Clerk

Checked and approved this 7<sup>th</sup> day of August, 1985. By Rand W. Anderson Anoka County Surveyor

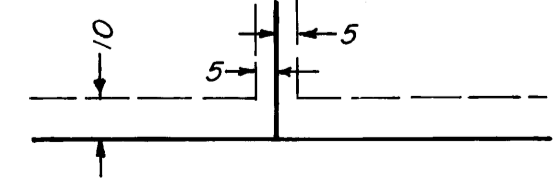
682394 OFFICE OF COUNTY RECORDER STATE OF MINNESOTA, COUNTY OF ANOKA I hereby certify that the within instrument was filed in this office for record on the 10<sup>th</sup> day of August, 1985, A.D., 19 at 1 o'clock P.M., and was duly recorded in book 35 of Page 27 Teal C. Lindahl County Recorder By W. J. Henderson Deputy

"NO DELINQUENT TAXES AND TRANSFER ENTERED" Aug 7<sup>th</sup> 1985 Donald C. Bailey, M.D. Auditor, Anoka County J.R. Kamich Deputy



○ DENOTES 1/2 INCH IRON PIPE. FOR THE PURPOSES OF THIS PLAT, THE SOUTH LINE OF SAID PLAT IS ASSUMED TO BEAR N89°09'45"W.

DRAINAGE AND UTILITY EASEMENTS, BEING 10 FEET IN WIDTH AND ADJOINING FRONT LOT LINES AND 5 FEET IN WIDTH AND ADJOINING SIDE AND REAR LOT LINES, ARE SHOWN THUS:



CANE & ASSOCIATES LAND SURVEYORS, INC.