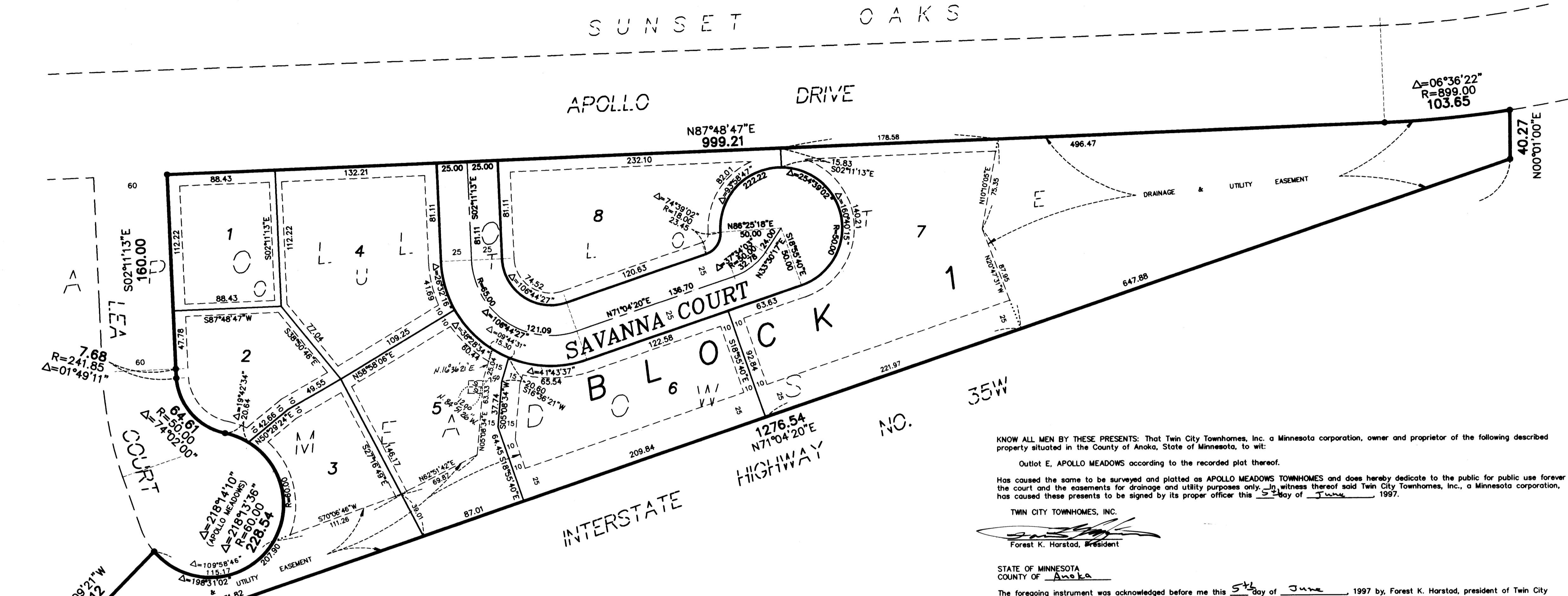
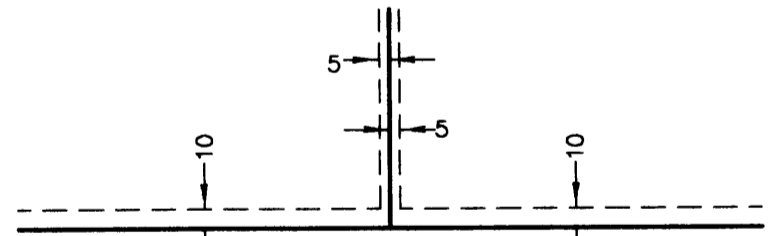


APOLLO MEADOWS TOWNHOMES

SUNSET OAKS



DRAINAGE AND UTILITY EASEMENTS ARE SHOWN THIS:



being 5 feet in width, and adjoining lot lines, 10 feet in width and adjoining right of way lines and rear lot lines unless otherwise indicated on the plat.

- Denotes iron monument found.
- Denotes 1/2 inch by 14 inch iron monument set and marked with license number 14891.

No monument symbol shown on the plat indicates monuments to be set according to Minnesota Statutes and which shall be in place on or before the 20th day of June, 1997.

For the purpose of this plat, the north line of Outlot E, Apollo Meadows has an assumed bearing of N87°48'47"E.

KNOW ALL MEN BY THESE PRESENTS: That Twin City Townhomes, Inc. a Minnesota corporation, owner and proprietor of the following described property situated in the County of Anoka, State of Minnesota, to wit:

Outlot E, APOLLO MEADOWS according to the recorded plat thereof.

Has caused the same to be surveyed and platted as APOLLO MEADOWS TOWNHOMES and does hereby dedicate to the public for public use forever the court and the easements for drainage and utility purposes only. In witness thereof said Twin City Townhomes, Inc., a Minnesota corporation, has caused these presents to be signed by its proper officer this 5th day of June, 1997.

TWIN CITY TOWNHOMES, INC.

 Forest K. Harstad, President

STATE OF MINNESOTA
 COUNTY OF Anoka

The foregoing instrument was acknowledged before me this 5th day of June, 1997 by Forest K. Harstad, president of Twin City Townhomes, Inc., a Minnesota corporation, on behalf of said corporation.

Cheryl R. Schmidt
 Notary Public, Chicago County, Minnesota
 My Commission Expires 1-31-2000

I hereby certify that I have surveyed and platted the property described on this plat as APOLLO MEADOWS TOWNHOMES, that this plat is a correct representation of the survey; that all distances are correctly shown on the plat in feet and hundredths of a foot; that all monuments have been correctly placed in the ground as shown or will be placed as required by the local governmental unit; that the outside boundary lines are correctly designated on the plat and that there are no wet lands to be designated on said plat.

Robert B. Sikich, Land Surveyor
 Minnesota License Number 14891

STATE OF MINNESOTA
 COUNTY OF Anoka

The foregoing Surveyor's Certificate was acknowledged before me this 3rd day of June, 1997 by Robert B. Sikich, Land Surveyor, Minnesota, License No. 14891.

Howard W. Rogers
 Notary Public, Sherburne County, Minnesota
 My Commission Expires Jan 31, 2000

HOWARD W. ROGERS
 NOTARY PUBLIC - MINNESOTA
 SHERBURNE COUNTY
 MY COMM. EXP. 01/31/2000

LINO LAKES, MINNESOTA

This plat of APOLLO MEADOWS TOWNHOMES was approved and accepted by the City Council of the City of Lino Lakes Minnesota, at a regular meeting thereof held this 12th day of May, 1997. If applicable, the written comments and recommendations of the Commissioners of Transportation and the County Highway Engineer have received by the City or the prescribed 30 day period has elapsed without receipt of such comments and recommendations, as provided by Minnesota Statutes Section 505.03, Section 2.

By:
 Mayor

By:
 City Clerk

Checked and approved this 20th day of June, 1997.

By:
 Edward M. Treska
 Anoka County Surveyor

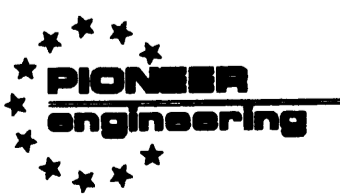
I HEREBY CERTIFY THAT THE CURRENT AND DELINQUENT TAXES ON THE LANDS DESCRIBED WITHIN ARE PAID AND THE TRANSFER IS ENTERED

June 20 19 97

EDWARD M. TRESKA
 PROPERTY TAX ADMINISTRATOR

By:
 R. Culver
 DEPUTY PROPERTY TAX ADMINISTRATOR

CITY OF LINO LAKES
 SEAL



2422 Enterprise Drive
 Mendota Heights, MN 55120
 (612) 681-1914 FAX: 681-9488

625 Highway 10 N.E.
 Blaine, MN 55434
 (612) 783-1880 FAX: 783-1883

#41248 \$335.00