

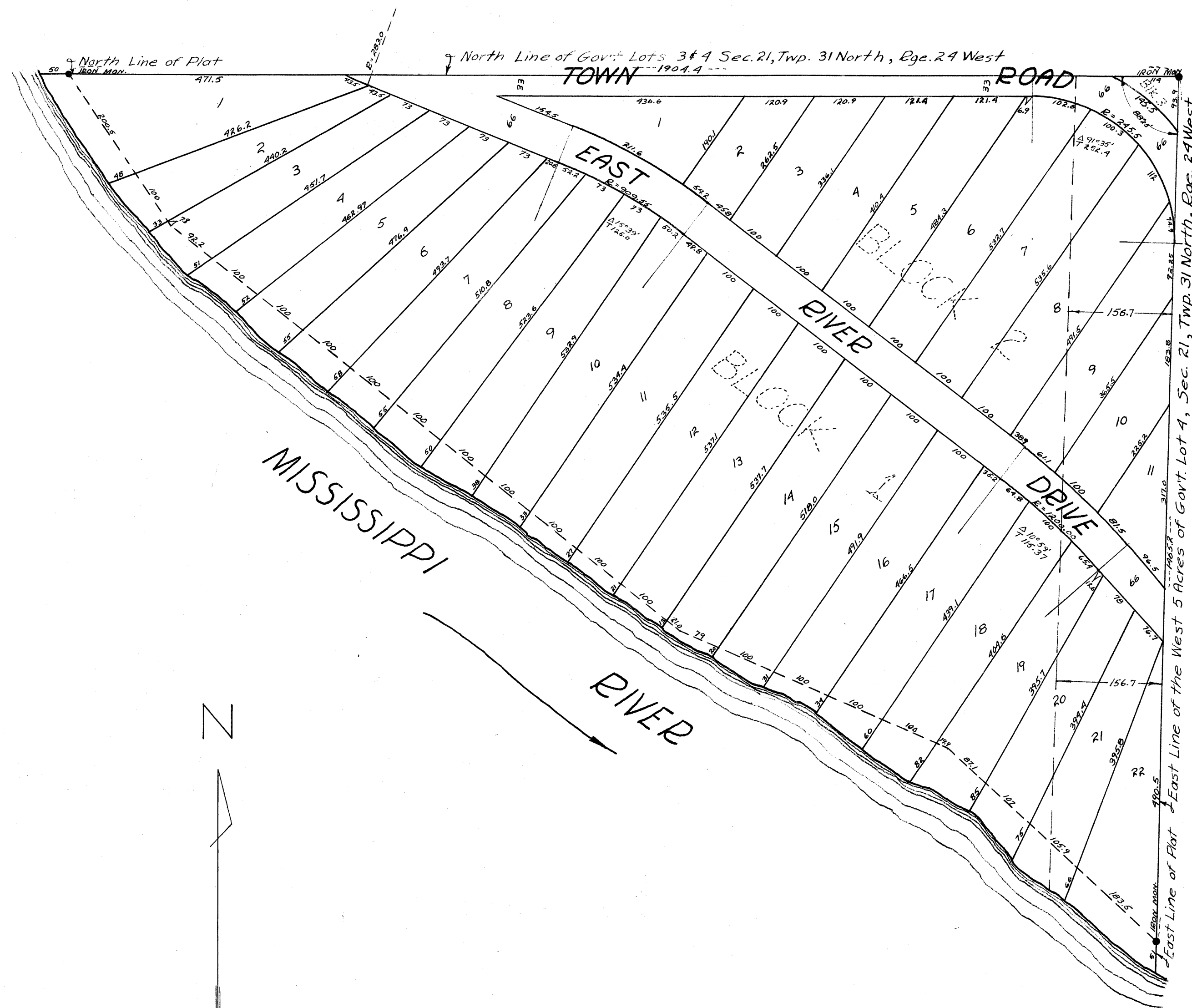
116862

APPLETON'S RIVER DRIVE

ANOKA COUNTY, MINNESOTA

HARVEY A. CARTWRIGHT - SURVEYOR

OFFICE OF REGISTER OF DEEDS
 STATE OF MINNESOTA, COUNTY OF ANOKA
 I hereby certify that the within instrument was filed in my office on this 24th day of May, 1945, at 11:06 a.m. and is duly recorded in book 2198, page 23.
 Eva Brandell
 Register of Deeds



KNOW ALL MEN BY THESE PRESENTS: That we, Jay C. Appleton and Jane Elizabeth Appleton, his wife, owners and proprietors of the following described property to wit: All of Government Lot three (3) and the west five (5) acres of Government Lot four (4) all in Section twenty-one (21), Township thirty one North (T.31N), Range twenty four West (R.24W.) of the fourth Principal Meridian (4th PM), Anoka County, Minnesota, have caused the same to be Surveyed and Platted as APPLETON'S RIVER DRIVE, Anoka County, Minnesota and do hereby donate and dedicate to the Public use forever the Drive and Road as shown on the annexed Plat. In witness whereof we have hereunto set our hands and seals on this 10 day of SEPT 1945 A.D.

In the Presence of
 John Seaman
 Notary Public, Anoka County, Minn.

Signed
 Jay C. Appleton
 Jane Elizabeth Appleton

STATE OF MINNESOTA } S.S.
 COUNTY OF ANOKA }
 On this 10 day of SEPT 1945 A.D. before me, a Notary Public in and for said County and State, personally appeared Jay C. Appleton and Jane Elizabeth Appleton, his wife, to me personally known to be the persons described in and who executed the foregoing instrument and they affirm and acknowledge that they executed the same as their own free act and deed.
 Notary Public, ANOKA COUNTY, Minnesota
 My Commission expires _____
 JOHN SEAMAN
 Notary Public, Anoka County, Minn.
 My Commission Expires May 1, 1952.

I hereby certify that: I have Surveyed and Platted the land described in the dedication on this sheet as 'APPLETON'S RIVER DRIVE', Anoka County, Minnesota; that this Plat is a correct representation of said survey; that all distances are correctly shown on said Plat in figures denoting feet and decimals of a foot; that the monuments for the guidance of future surveys have been correctly placed in the ground as shown on said Plat; that the topography of the land is correctly shown on said Plat; that the outside boundaries of the land are correctly designated on said Plat; and that there are no wet lands or Public Highways to be designated on said Plat other than are thereon shown.
 Registered Land Surveyor - Minnesota 1933
 Harvey A. Cartwright

STATE OF MINNESOTA } S.S.
 COUNTY OF ANOKA }
 Above certificate subscribed and sworn to before me, a Notary Public in and for said County and State on this 10 day of SEPT 1945 A.D.
 Notary Public, Anoka County, Minnesota
 My Commission expires _____
 JOHN H. NORDIN
 Notary Public, Anoka County, Minn.
 My Commission Expires Dec. 23, 1950.

This Plat was approved and accepted by the Honorable Board of County Commissioners of the County of Anoka, State of Minnesota at a regular meeting held this 10th day of September, A.D. 1945
 Chairman Board of County Commissioners, Anoka County, Minnesota
 County Auditor, Anoka County, Minnesota
 By _____ Deputy

This Plat approved as to form and execution on this 23rd day of May 1946 A.D. by
 Charles P. Wightman County Attorney, Anoka County, Minnesota

TAXES PAID
 This _____ day of _____ 19____
 I, _____
 Auditor, Anoka County, Minn.
 By _____ Deputy
 I hereby certify that taxes for the year 1945 on the lands described within are paid
 Walter D. Bowers
 County Treasurer

Scale: 1" = 150'