

APPLEWOOD COVE

CITY OF OAK GROVE
COUNTY OF ANOKA
SEC. 32, TWP. 33, RGE. 24

KNOW ALL PERSONS BY THESE PRESENTS: That BF3, LLC, a Minnesota limited liability company, owner of the following described property:

The Northeast Quarter of the Northeast Quarter of Section 32, Township 33, Range 24, Anoka County, Minnesota.

Has caused the same to be surveyed and platted as APPLEWOOD COVE and does hereby dedicate to the public for public use the public ways and the drainage and utility easements as shown on this plat.

In witness whereof said BF3, LLC, a Minnesota limited liability company, has caused these presents to be signed by its proper officer this 16th day of April, 2020.

BF3, LLC

Kent A. Roessler
Kent A. Roessler, Chief Manager

STATE OF Minnesota
COUNTY OF Anoka

This instrument was acknowledged before me on April 16th, 2020 by Kent A. Roessler, Chief Manager of BF3, LLC, a Minnesota limited liability company, on behalf of the company.

Jacee A. Geschwill (Signed)
Jacee A. Geschwill (Printed)
Notary Public, State of Minnesota
My commission expires January 31, 2023

I Thomas R. Balluff do hereby certify that this plat was prepared by me or under my direct supervision; that I am a duly Licensed Land Surveyor in the State of Minnesota; that this plat is a correct representation of the boundary survey, that all mathematical data and labels are correctly designated on this plat; that all monuments depicted on this plat have been, or will be correctly set within one year; that all water boundaries and wet lands, as defined in Minnesota Statutes, Section 505.01, Subd. 3, as of the date of this certificate are shown and labeled on this plat; and all public ways are shown and labeled on this plat.

Dated this 16th day of APRIL, 2020.

Thomas R. Balluff
Thomas R. Balluff, Licensed Land Surveyor
Minnesota License No. 40361

STATE OF Minnesota
COUNTY OF Anoka

This instrument was acknowledged before me on April 16th, 2020 by Thomas R. Balluff.

Dawn Meyers (Signed)
DAWN MEYERS (Printed)
Notary Public, State of Minnesota
My commission expires January 31, 2023

CITY COUNCIL, CITY OF OAK GROVE, MINNESOTA

This plat of APPLEWOOD COVE was approved and accepted by the City Council of the City of Oak Grove, Minnesota at a regular meeting thereof held this 20th day of July, 2019, and said plat is in compliance with the provisions of Minnesota Statutes, Section 505.03, Subd. 2.

CITY COUNCIL, CITY OF OAK GROVE, MINNESOTA

By: Dan Dennis Mayor
By: J. Rieland Clerk

COUNTY SURVEYOR

I hereby certify that in accordance with Minnesota Statutes, Section 505.021, Subd. 11, this plat has been reviewed and approved this 21st day of April, 2020.

By: Charles F. Gitzen
Charles F. Gitzen
Anoka County Surveyor

COUNTY AUDITOR/TREASURER

Pursuant to Minnesota Statutes, Section 505.021, Subd. 9, taxes payable in the year 2020 on the land hereinbefore described have been paid. Also, pursuant to Minnesota Statutes, Section 272.12, there are no delinquent taxes and transfer entered this 21st day of April, 2020.

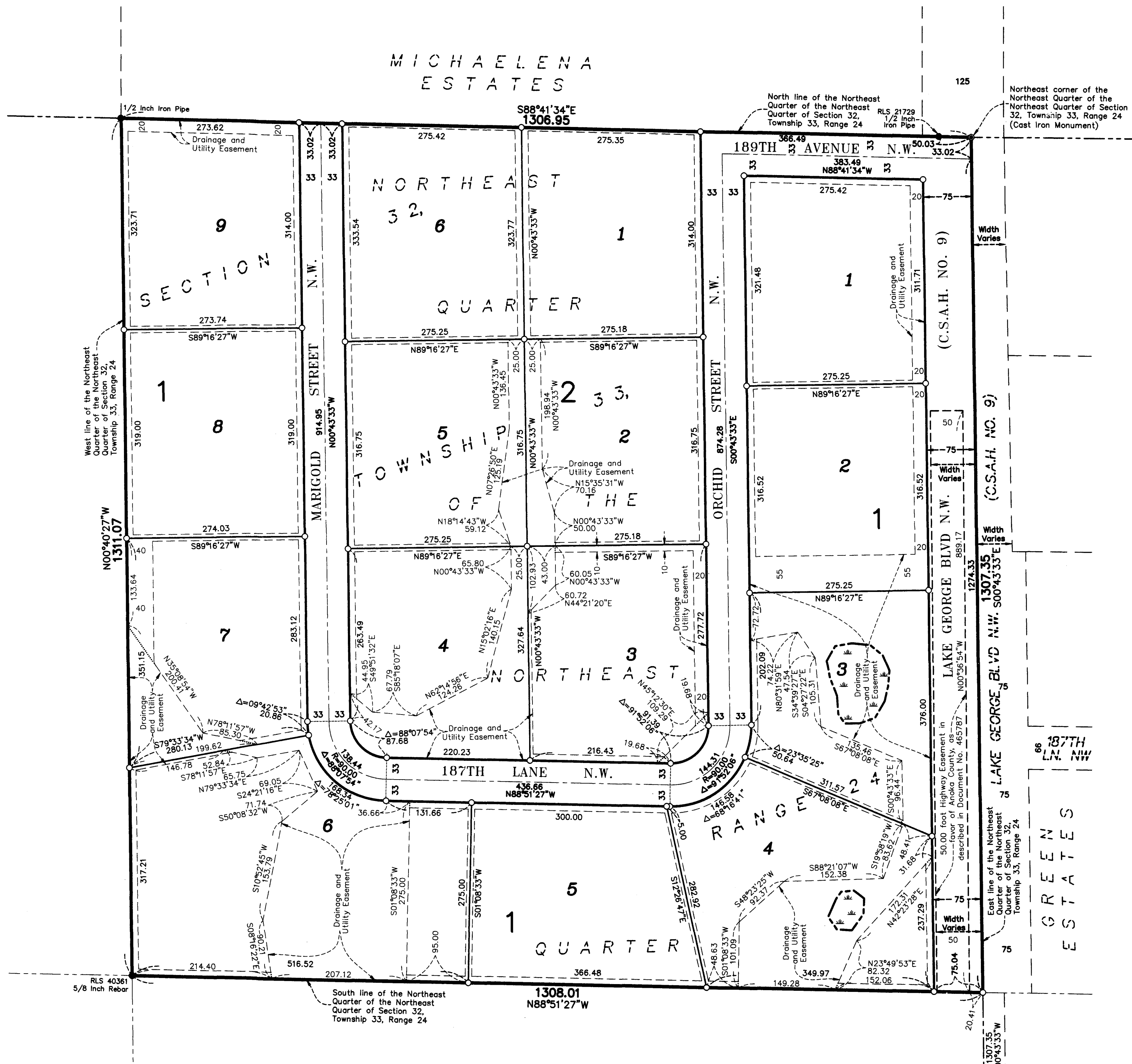
Jonell M. Sawyer
Property Tax Administrator
By: [Signature] Deputy

COUNTY RECORDER/REGISTRAR OF TITLES

County of Anoka, State of Minnesota

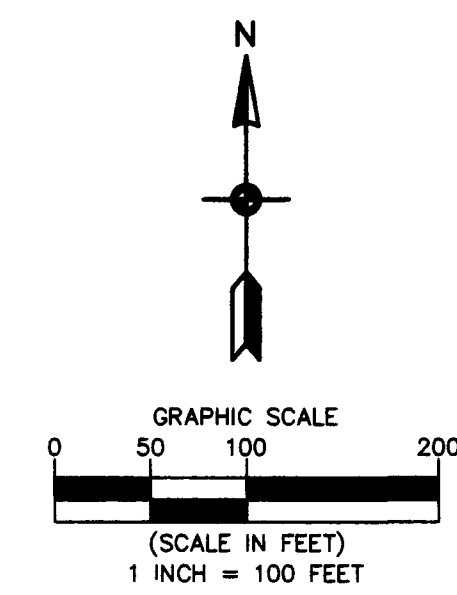
I hereby certify that this plat of APPLEWOOD COVE was filed in the office of the County Recorder/Registrar of Titles for public record on this 21st day of April, 2020 at 12:56 o'clock P.M. and was duly recorded as Document Number 2258515.00.

Jonell M. Sawyer
County Recorder/Registrar of Titles
By: [Signature] Deputy

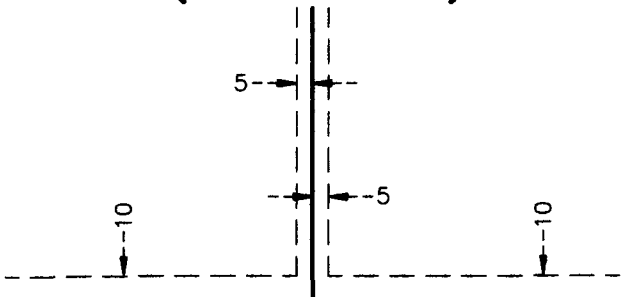


For the purposes of this plat, the North line of the Northeast Quarter of the Northeast Quarter of Section 32, Township 33, Range 24 is assumed to have a bearing of South 88 degrees 41 minutes 34 seconds East.

- Denotes 5/8 inch by 14 inch Rebar, set or to be set within one year of recording of this plat and marked with license number 40361
- Denotes Found Iron Monument, as noted
- Denotes Found Anoka County Section Monument, as noted
- Denotes Wetland, Delineated by Kjolhaug Environmental Services Company in 2018



DRAINAGE AND UTILITY EASEMENTS ARE SHOWN THUS: (NOT TO SCALE)



being 5 feet in width, and adjoining side lot lines, and 10 feet in width and adjoining right of way lines and rear lot lines unless otherwise shown on this plat.

5515.00