

ARBORLAKE

CITY OF LINO LAKES, COUNTY OF ANOKA

Know All Persons by These Presents: That John E. Blomquist, Inc., a Minnesota Corporation, owner of the following described property, situated in the County of Anoka and State of Minnesota, to wit:

That part of Government Lots 5 and 6, Section 36, Township 31, Range 22, described as follows: Beginning at the Southeast corner of said Government Lot 5; thence North 00 degrees 51 minutes 53 seconds East, 1083.00 feet along the east line of said Government Lot 5; thence South 81 degrees 12 minutes 42 seconds West, 151.54 feet; thence North 49 degrees 51 minutes 01 seconds West to the shoreline of Otter Lake; thence southeasterly along said shoreline to the south line of said Government Lot 5; thence South 89 degrees 08 minutes 59 seconds East along said south line, 1395.83 feet to the point of beginning.

has caused the same to be surveyed and platted as ARBORLAKE and do hereby donate and dedicate to the public for public use forever the road, the court and the drainage and utility easements as shown on the plat.

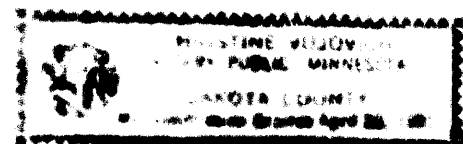
In witness whereof said John E. Blomquist, Inc., a Minnesota corporation, has caused these presents to be signed by its proper officer this 3rd day of March of 19 80.

SIGNED: John E. Blomquist, Inc., a Minnesota Corporation

John E. Blomquist Jr.
President

STATE OF MINNESOTA
COUNTY OF Ramsey The foregoing instrument was acknowledged before me this 3 day of March, 19 80 by John E. Blomquist Jr., President of John E. Blomquist, Inc., a Minnesota Corporation, on behalf of the Corporation.

Christine Verjmech Notary Public
Dakota County, Minnesota
My Commission Expires April 29, 1981



I, James E. Boerhave, hereby certify that I have surveyed and platted the property described on this plat as ARBORLAKE, that this plat is a correct representation of said survey; that all distances are correctly shown on the plat in feet and hundredths of a foot; that all monuments are correctly placed in the ground as shown on the plat; that the outside boundary lines are correctly designated on the plat.

James E. Boerhave
James E. Boerhave, Registered Land Surveyor
Minnesota Registration Number 7095

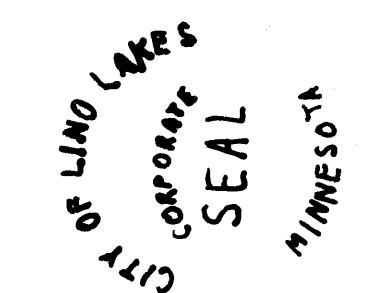


STATE OF MINNESOTA
COUNTY OF HENNEPIN The foregoing instrument was acknowledged before me this 20th day of DECEMBER, 19 79, by James E. Boerhave.

Lyndal W. Anderson Notary Public, HENNEPIN COUNTY, MINN.
My Commission Expires APRIL 20, 1982

We hereby certify that the City Council of the City of Lino Lakes, Anoka County, Minnesota, duly accepted and approved the plat of ARBORLAKE at a regular meeting thereof held this 14th day of July, 19 80.
CITY COUNCIL OF LINO LAKES, MINNESOTA

By: F. Kenneth Gourley Mayor
By: Edna R. Garner Clerk



Checked and approved this 24th day of July, 19 80.

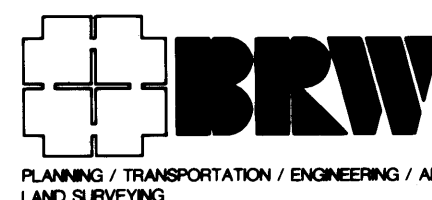
Robert W. Anderson
Anoka County Surveyor

"NO DELINQUENT TAXES AND TRANSFER ENTRIES"

July 24 1980
Charles P. DeBure
Auditor, Anoka County
By Ed L. Verlea
Deputy

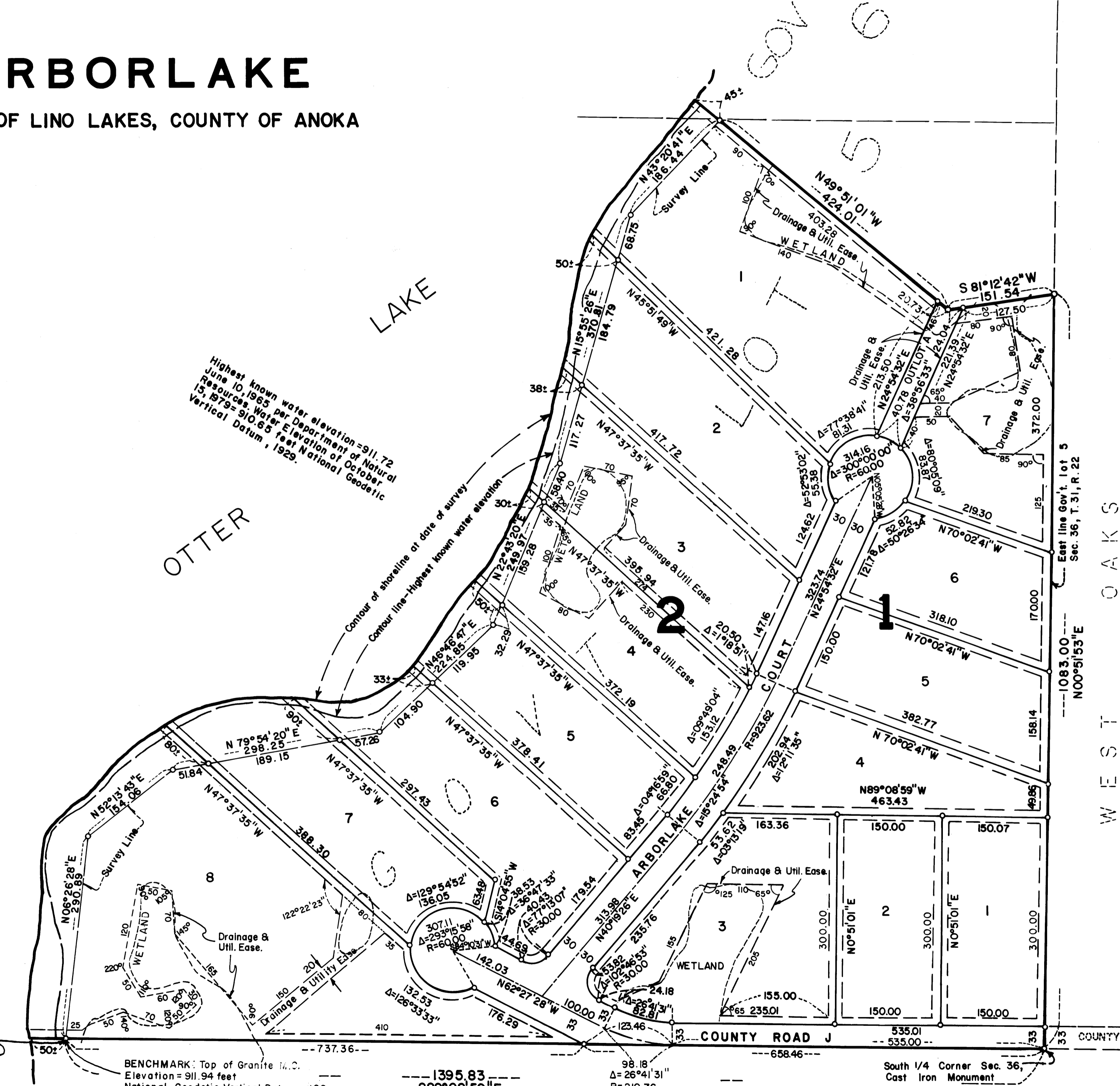
552796
OFFICE OF COUNTY RECORDER
STATE OF MINNESOTA, COUNTY OF ANOKA
I hereby certify that the within instrument was filed in this office for record on the JUL 24 A.D., 19 80
3:55 o'clock P.M., and was duly recorded in book 316E page 10

Ed J. Omdahl
County Recorder
By V. P. Halverson
Deputy



ARBORLAKE

CITY OF LINO LAKES, COUNTY OF ANOKA



Highest known water elevation=911.72
June 10, 1962 per Department of Natural Resources. Water Elevation of October 15, 1979= 910.65 feet National Geodetic Vertical Datum, 1929.

OTTER LAKE

South of Lot 5



ORIGINAL SCALE 1 INCH=100 FEET
0 100 200 300
SCALE IN FEET

◊ DENOTES IRON MONUMENT
BASIS FOR BEARINGS IS ASSUMED

DRAINAGE AND UTILITY EASEMENTS ARE SHOWN THUS:

BEING 10 FEET IN WIDTH AND ADJOINING LOT LINES UNLESS OTHERWISE INDICATED.

GRANITE M.C.
RAMSEY CO. MON.

BENCHMARK: Top of Granite M.C.
Elevation= 911.94 feet
National Geodetic Vertical Datum, 1929

1395.83
S89°08'59\"/>

98.18
Δ= 26°41'31\"/>
R= 210.76

South 1/4 Corner Sec. 36,
Cast Iron Monument

