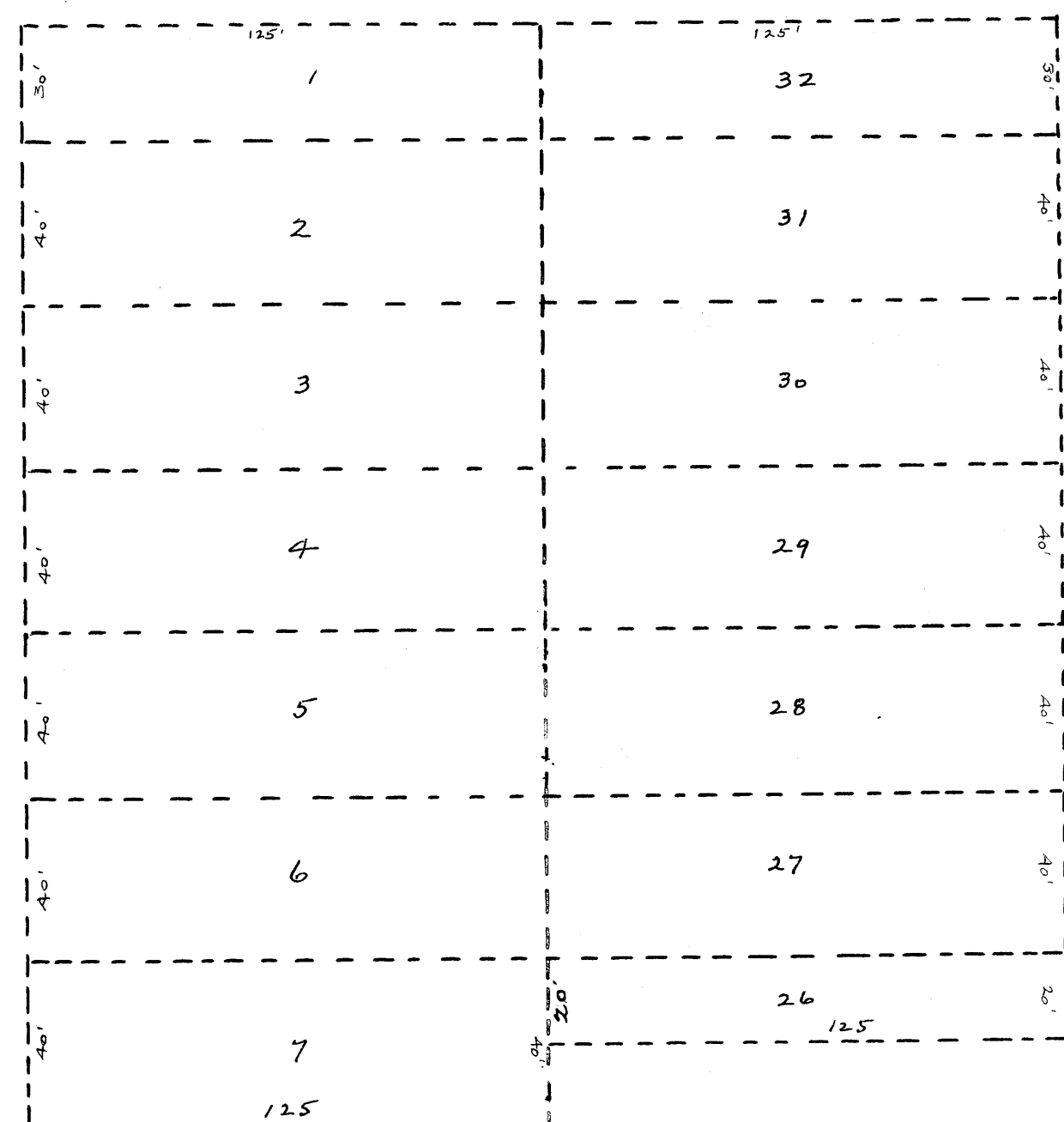
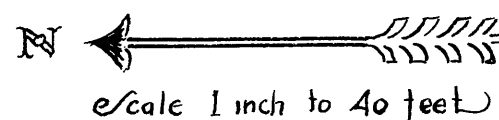
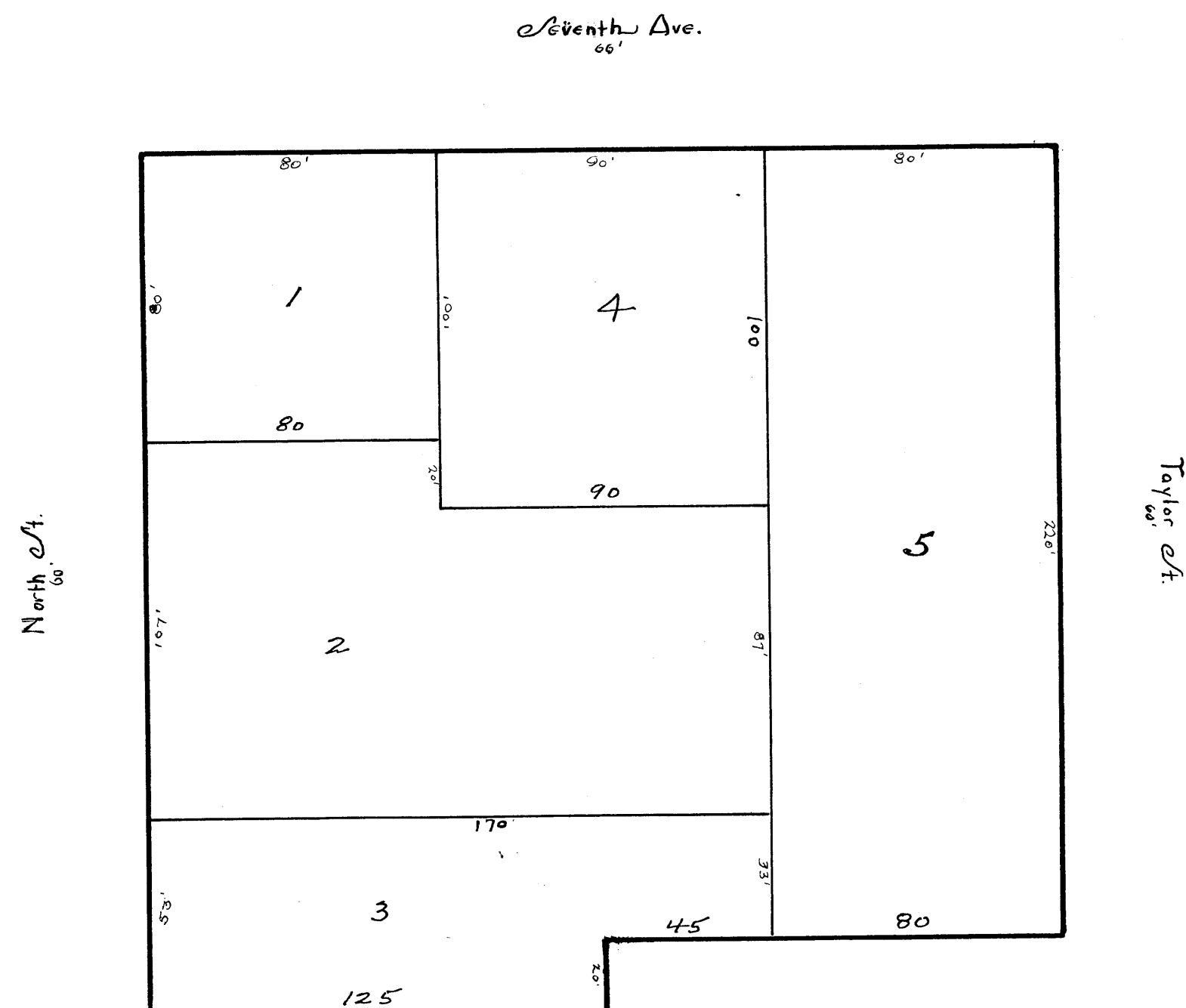


# AVDITOR'S PLAT No. 5.

## ANOKA, COVNTY, MINN.



ORIGINAL PLAT



NEW SURVEY

- DESCRIPTION of LANDS IN PLAT -  
 BLOCK ONE - LAUGHTER & CREIGHTON'S  
 ADDITION TO ANOKA, MINN.  
 LOTS 2, 3, 4, 5, 6, 7 - EAST HALF 26, 27, 28, 29, 30, 31.  
 LOTS 1 and 32 in STREET.

State of Minnesota }  
 County of Anoka } ss.

Auditor of  
 I, E. A. Carlson, Anoka County, Minnesota Auditor, do hereby certify  
 that Wayne L. Ridge, County Surveyor of said County, at my request  
 surveyed and platted the property designated by this plat known  
 as Auditor's Plat No. 5 in pursuance of Section 991 of Revised  
 Laws of 1905 and amended by Chapter 32, Laws of 1911.

*E. A. Carlson*  
 County Auditor

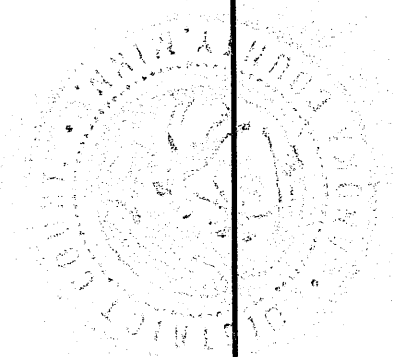
State of Minnesota }  
 County of Anoka } ss.

I, Wayne L. Ridge, County Surveyor of Anoka County, Minnesota do  
 hereby certify that I have surveyed and platted the property  
 described in this plat known as Auditor's Plat No. 5 that this plat is  
 a correct representation of said survey that all distances are  
 correctly shown in feet, that the outside boundary lines are correctly  
 designated on the plat and that there are no public highways  
 other than as shown thereon.

*Wayne L. Ridge*  
 County Surveyor

Above certificate subscribed and sworn to before me this 23<sup>rd</sup>  
 day of December 1935

*Wm. A. Wilson*  
 Clerk of District Court  
 Anoka, County, Minn.



#90557

OFFICE OF REGISTER OF DEEDS, }  
 STATE OF MINNESOTA, COUNTY OF ANOKA } ss.

I hereby certify that the within instru-  
 ment was filed in this office for record on  
 this 23<sup>rd</sup> day of December, A. D. 1935,  
 at 9 o'clock A. M., and was duly re-  
 corded in book 114, page 221.

*Wm. A. Wilson*  
 Register of Deeds  
 Wm. A. Wilson  
 Deputy

TAXES PAID  
 AND TRANSFER DUTY

Dec 1, 1935

*E. A. Carlson*

1934

*Walter D. Bowley*