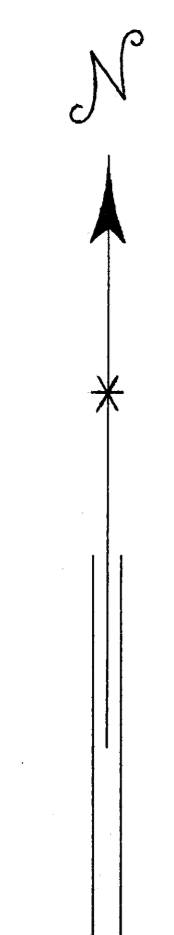
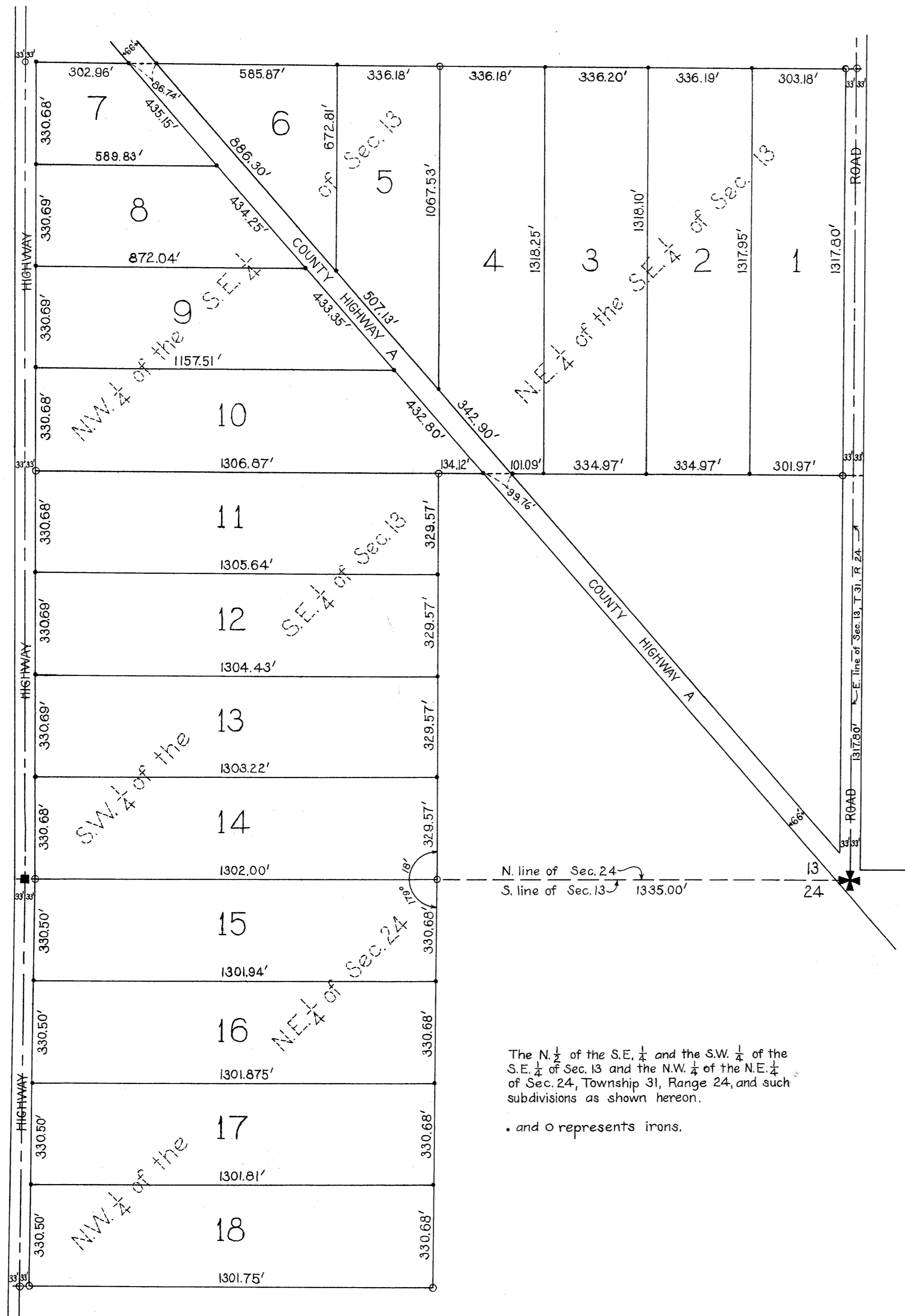


AUDITORS PLAT NO. 8 ANOKA COUNTY, MINN.



Scale 1" = 300'

State of Minnesota }
County of Anoka } SS

I, E. A. Carlson, Auditor of Anoka County, Minnesota, do hereby certify that Wayne L. Ridge, County Surveyor of said county, at my request surveyed and platted the property designated by this plat as "Auditors Plat No. 8" in pursuance of Section 991 of Revised laws of 1905 and as amended by Chapter 32, Laws of 1911.

E. A. Carlson
County Auditor

Above certificate subscribed and sworn to before me this 2nd day of February 1938.

Shea Carlson
CLERK OF DIST. COURT
ANOKA COUNTY, MINNESOTA

State of Minnesota }
County of Anoka } SS

I, Wayne L. Ridge, County Surveyor of Anoka County, Minnesota, do hereby certify that I have surveyed and platted the property described in this plat as "Auditors Plat No. 8", that this plat is a correct representation of said survey, that all distances are correctly shown in feet and decimals of a foot, that the outside boundary lines are correctly designated on the plat, and that there are no public highways other than as shown thereon.

Wayne L. Ridge
County Surveyor

Above certificate subscribed and sworn to before me this 2nd day of February, 1938.

Shea Carlson
CLERK OF DIST. COURT
ANOKA COUNTY, MINNESOTA

The N. 1/2 of the S.E. 1/4 and the S.W. 1/4 of the S.E. 1/4 of Sec. 13 and the N.W. 1/4 of the N.E. 1/4 of Sec. 24, Township 31, Range 24, and such subdivisions as shown hereon.

• and O represents irons.

94425

OFFICE OF REGISTER OF DEEDS,
STATE OF MINNESOTA, COUNTY OF ANOKA } SS

I hereby certify that the within instrument was filed in this office for record on the 4th day of February, 1938, at 4:01 P.M. and being recorded in book 8 of Plat 94425.

Clarence J. Fisher
Register of Deeds