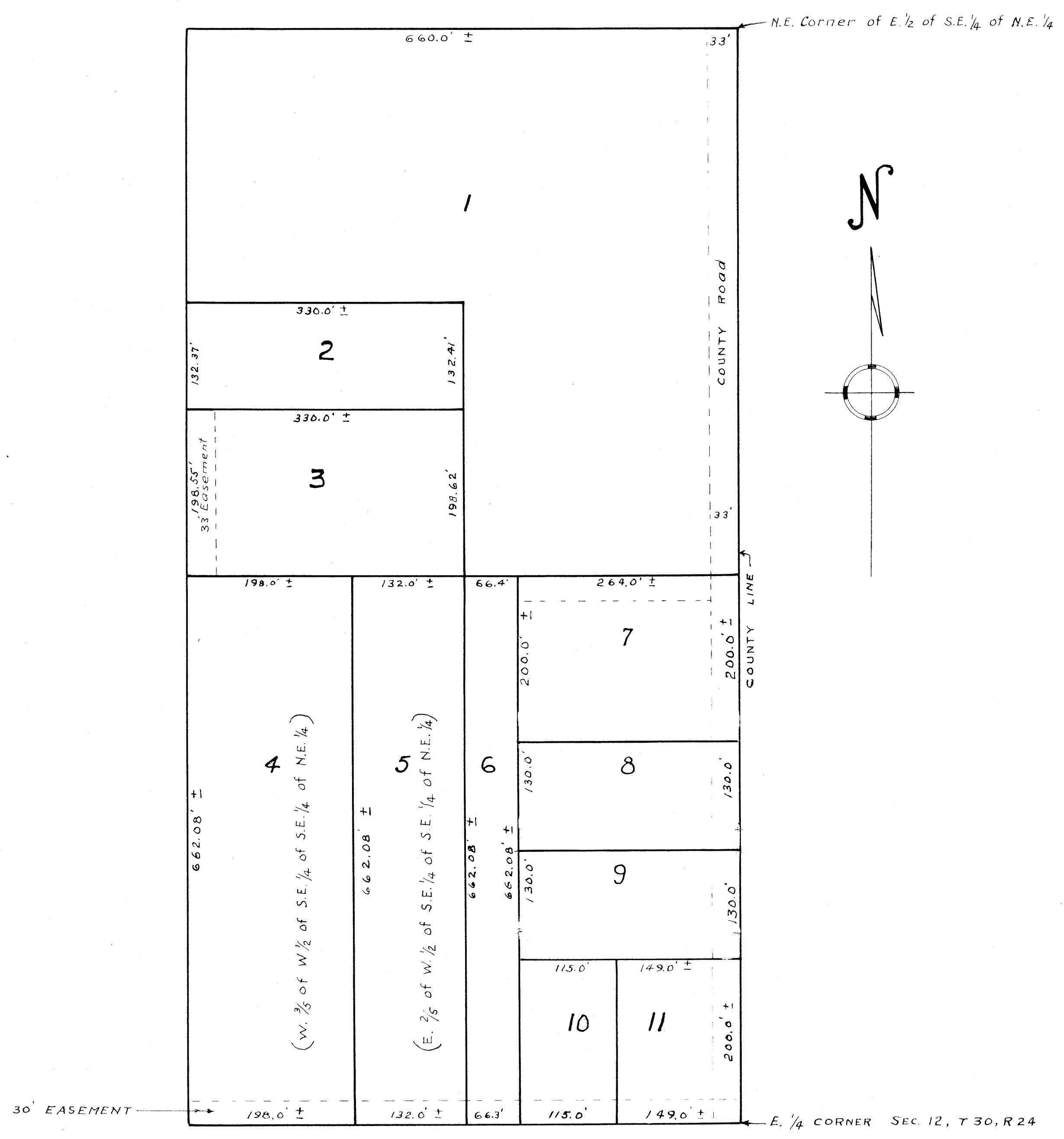


Original

# AUDITOR'S SUBDIVISION No. 108

SCALE 1" = 100'



I hereby certify that in accordance with Section 2219 Chapter 11 General Statutes of 1923 and as amended by chapter 21 Laws of 1935 and in accordance with the order of the County Auditor of Anoka County, Minnesota, I have platted the following described land in the County of Anoka and the State of Minnesota to wit: the East 1/2 of the Southeast 1/4 of the Northeast 1/4 of Section 12, Township 30, Range 24, that the Plat on this sheet is a correct delineation of said platting and is to be known as AUDITOR'S SUBDIVISION No. 108 and that all distances are shown in feet and decimals of a foot and conform to those stated in the instruments of conveyance.

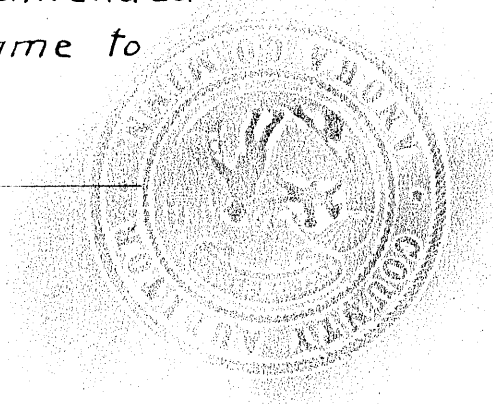
March 22, 1950  
Dated

*Henry C. Cartwright*

I, E.A. Carlson County Auditor of Anoka County, Minnesota, hereby certify that I have notified the owners of the land described in the foregoing certificate, to plat the same and a reasonable time having elapsed since the service of said notice and request, I have caused the same to be platted in accordance with Section 2219 Chapter 11 General Statutes of 1923 and as amended by Chapter 21 laws of 1935, and in accordance with the plat on this sheet, and the same to be known as AUDITOR'S SUBDIVISION No. 108.

March 17, 1950  
Dated

E.A. Carlson  
County Auditor Anoka County Minnesota.  
*E. Skinner*



134952

OFFICE OF REGISTER OF DEEDS,  
STATE OF MINNESOTA, COUNTY OF ANOKA  
I hereby certify that the within plat was filed in this office for record on the 17th day of March, 1950, at 2:30 o'clock P.M., and was duly recorded in book \_\_\_\_\_ page 16  
*Eva Brandell*  
Register of Deeds  
*Jean Nevea*