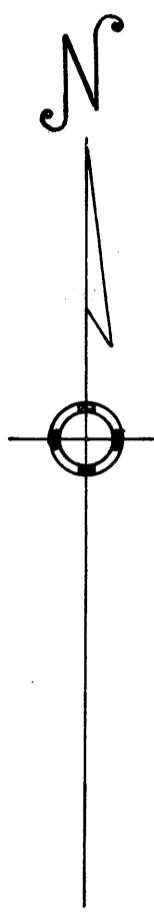
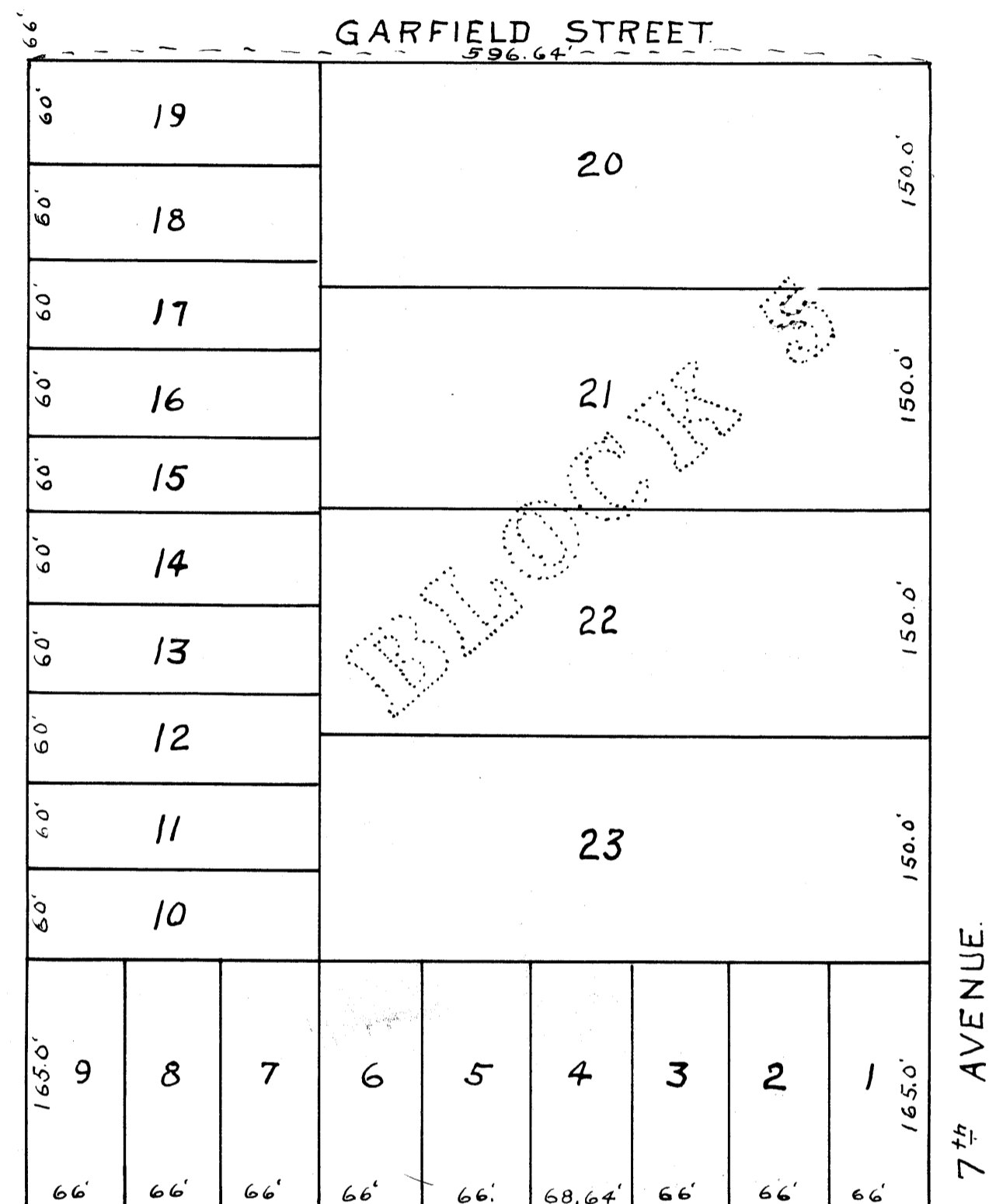


AUDITOR'S SUBDIVISION No. 110

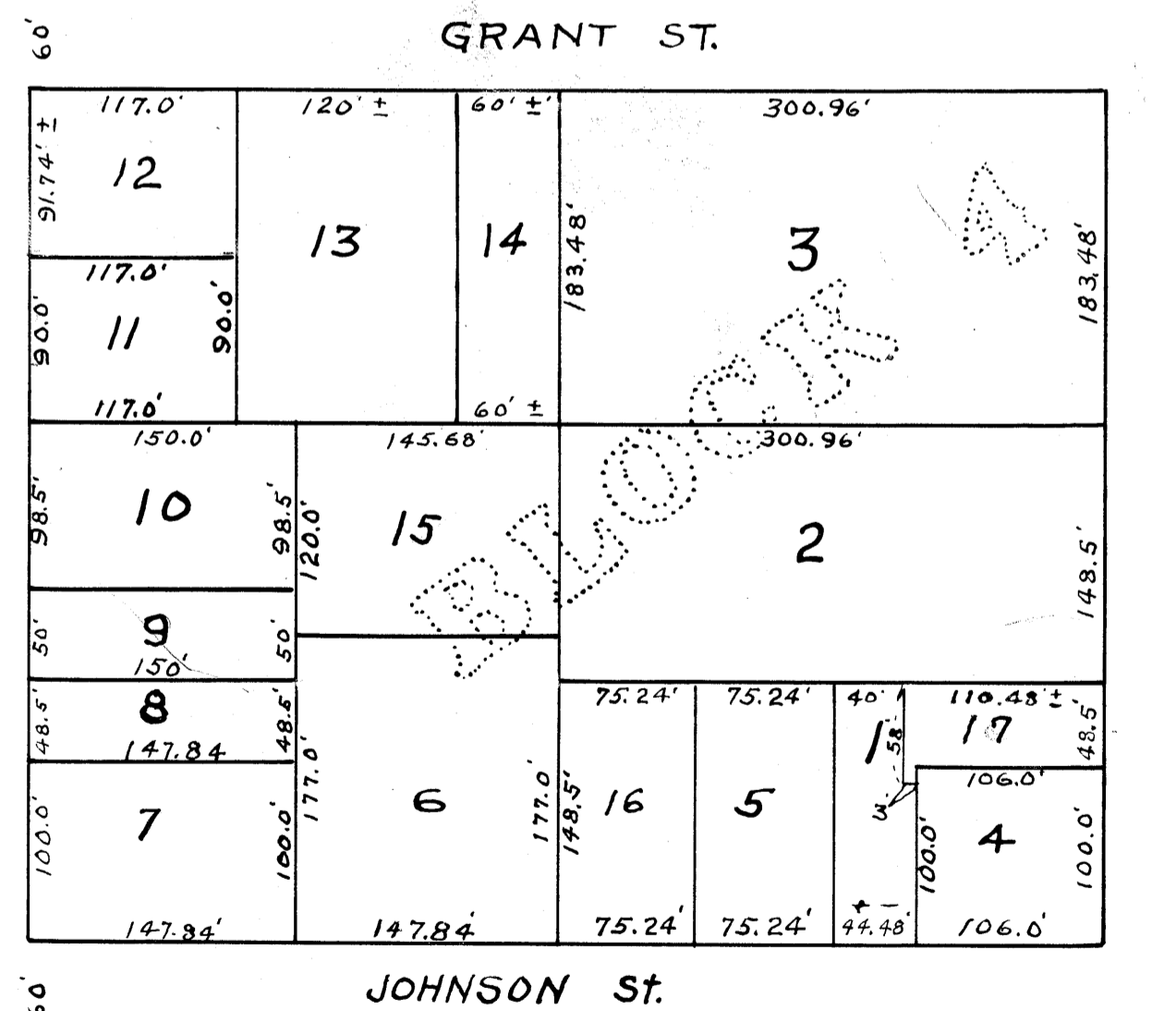
SCALE 1" = 100'



I hereby certify that in accordance with Section 2219 Chapter 11 General Statutes of 1923 and as amended by Chapter 21 laws of 1935, and in accordance with the order of the County Auditor of Anoka County, Minnesota, I have platted the following described land in the County of Anoka and the State of Minnesota to-wit: - Blocks 4 & 5 of Woodbury's Addition to the City of Anoka according to the Plat on file and of record in the office of the Register of Deeds for Anoka County, Minnesota in Book "A" page 29. That the plat on this sheet is a correct delineation of said Platting and is to be known as AUDITOR'S SUBDIVISION No. 110 and that all distances are shown in feet and decimals of a foot and divisions shown hereon conform to those stated in the instruments of conveyance describing the lots hereon shown and as shown on the above described plat.

October 11, 1950
Dated

R. J. Streetly
Registered Engr. No. 378



I E. A. Carlson County Auditor of Anoka County, Minnesota hereby certify that I have notified the owners of the land described in the foregoing certificate to plat the same and a reasonable time having elapsed since the service of said notice, and request, I have caused the same to be platted in accordance with Section 2219 Chapter 11 General Statutes of 1923 and as amended by Chapter 21 laws of 1935 and in accordance with the plat on this sheet, and the same to be known as AUDITOR'S SUBDIVISION No. 110.

October 11, 1950
Dated

E. A. Carlson
County Auditor, Anoka County, Minnesota.
By D. Renalad, Deputy



137451

OFFICE OF REGISTER OF DEEDS,
STATE OF MINNESOTA, COUNTY OF ANOKA
I hereby certify that the within instrument was filed in this office for record on the _____ day of _____, 19____, at _____ o'clock _____ M., and was duly recorded in book _____ page _____
Earl Donaldell
Register of Deeds
By Jean Wever
Deputy

Checked By _____
Date _____