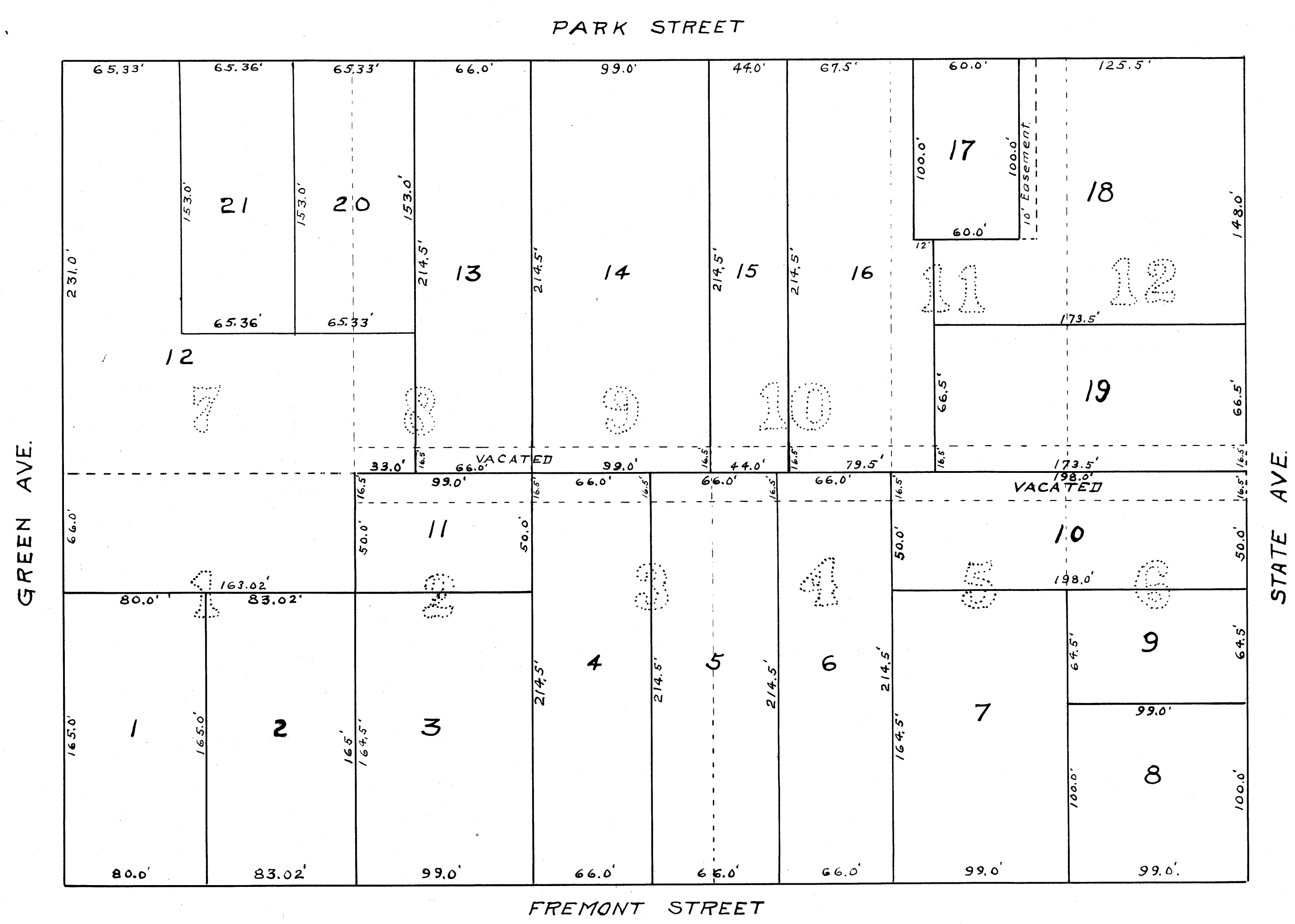


(Original)

# AUDITOR'S SUBDIVISION No. 118

SCALE 1" = 50'



I hereby certify that in accordance with Section 2219, Chapter 11 General Statutes of 1923 and as amended by Chapter 494 laws of 1947 and in accordance with the order of the County Auditor of Anoka County, Minnesota, I have platted the following described land in the County of Anoka and the State of Minnesota to-wit:- Block No. 1 of Geo. W. Branche's Addition to Town of Anoka in the County of Anoka, Territory of Minnesota according to the plat duly recorded and of record in the office of the Register of deeds for Anoka County, Minnesota in Book "A" page 9. That the plat on this sheet is a correct delineation of said platting and is to be known as AUDITOR'S SUBDIVISION No. 118, that all distances are shown in feet and decimals of a foot and the measurements and divisions shown hereon conform to those stated in the instruments of conveyance describing the lots hereon shown.

Nov. 10-1949  
Dated

R. B. Struth  
Registered Eng. 378

I, E. A. Carlson, County Auditor of Anoka County, Minnesota, hereby certify that I have notified the owners of the land, described in the foregoing certificate, to plat the same and a reasonable time having elapsed since the service of said notice and request, I have caused the same to be platted in accordance with Section 2219 Chapter 11 General Statutes of 1923 and as amended by Chapter 21 laws of 1935, and in accordance with the plat on this sheet, and the same to be known as AUDITOR'S SUBDIVISION No. 118.

Nov 10, 1949  
Dated

E. A. Carlson  
County Auditor Anoka Co. Minnesota.  
By D. Anstad, Deputy

135950

OFFICE OF REGISTER OF DEEDS,  
STATE OF MINNESOTA, COUNTY OF ANOKA  
I hereby certify that the within instrument was filed in this office for record on the day of AUG 15 1950 A. D. 1950 in Block 118, and was duly recorded in Book 118 page 4  
Eva Brandell  
Register of Deeds  
By John Heala, Deputy

Checked by \_\_\_\_\_  
Date \_\_\_\_\_