

Original

# AUDITOR'S SUBDIVISION No. 129

SCALE 1" = 100'

I hereby certify that in accordance with section 2219, Chapter 11, General Statutes of 1923 and as amended by Chapter 494 laws of 1947 and in accordance with the order of ~~the order of~~ the County Auditor of Anoka County, Minnesota I have platted the following described land in Anoka County, Minnesota to-wit: the west three quarters (W. 3/4) of the south one half (S. 1/2) of the north-east quarter (N.E. 1/4) of Section 12, Township 30, Range 24 and known as Flanery's Oakland Addition. All distances shown on this plat are in feet and decimals of a foot and all measurements shown hereon conform to those stated in the instruments of conveyance or as shown on the Plat of Flanery's Oakland Addition now on file and of record in the office of the Register of Deeds for Anoka County, Minnesota, that the plat on this sheet is a correct delineation of said platting and is to be known as AUDITOR'S SUBDIVISION No. 129.

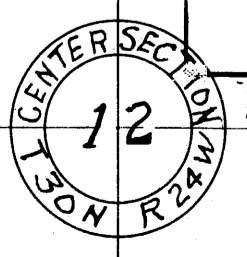
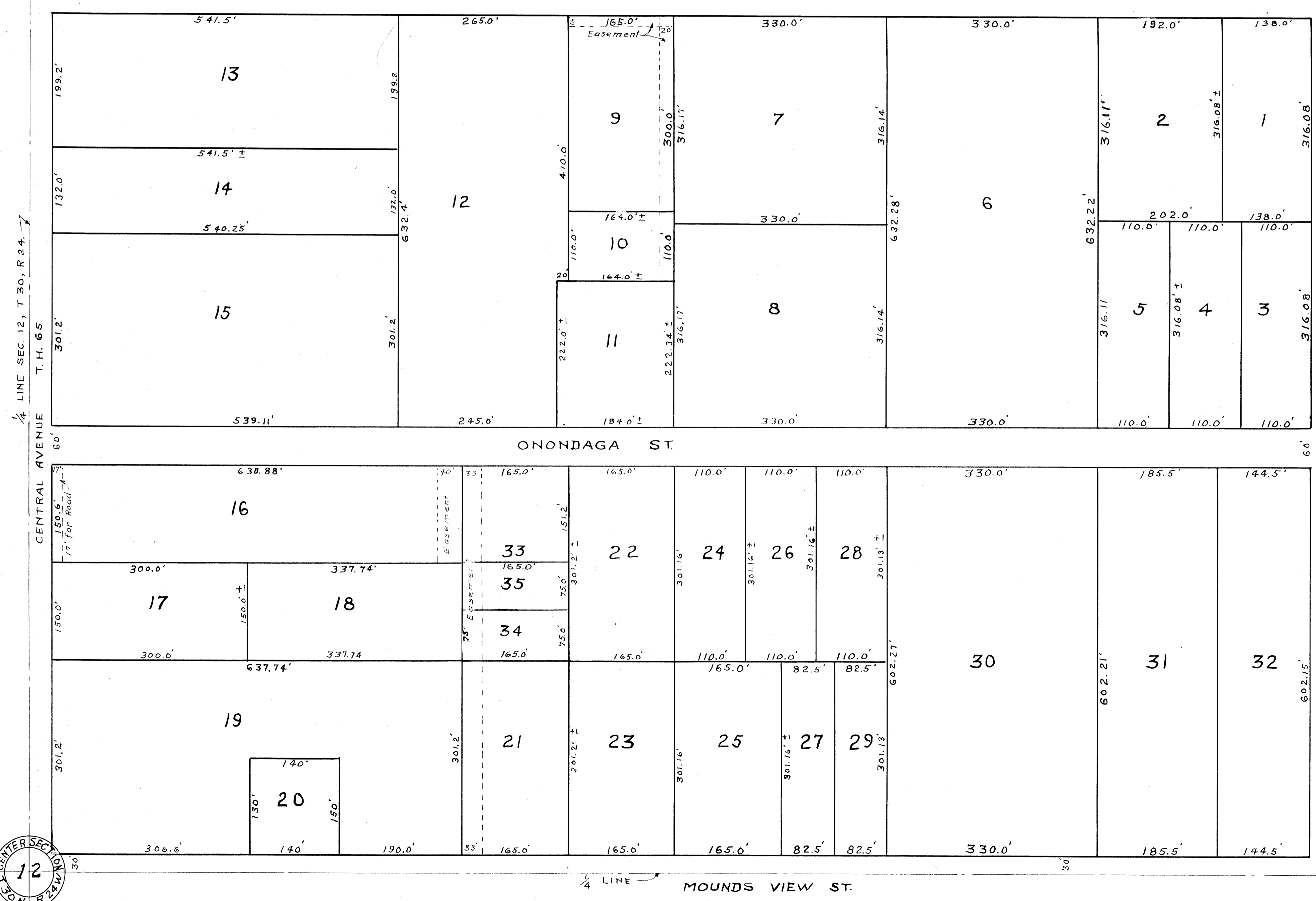
I, E.A. Carlson, County Auditor of Anoka County Minnesota hereby certify that I have notified the owners of the land, described in the foregoing certificate, to plat the same and a reasonable time having elapsed since the service of said notice and request I have caused the same to be platted in accordance with Section 2219 Chapter 11 General Statutes of 1923 and as amended by Chapter 21 laws of 1933 and in accordance with the plat on this sheet, and the same to be known as AUDITOR'S SUBDIVISION No. 129.

*C.L. 11, 1950*  
dated

*James C. Wright*  
County Surveyor Anoka Co., Minn.

*October 11, 1950*  
date

*E.A. Carlson*  
County Auditor Anoka County Minnesota  
*By D. Anstad, Deputy*



137359

OFFICE OF REGISTER OF DEEDS,  
STATE OF MINNESOTA, COUNTY OF ANOKA  
I hereby certify that the within instrument was filed in this office for record on the day of *NOV 24 1950*, D. 19*50* at *10* o'clock *A.M.*, and was duly recorded in book *772* page *15*.

*Eva Brandell, Secy*  
Register of Deeds  
*John News, Deputy*