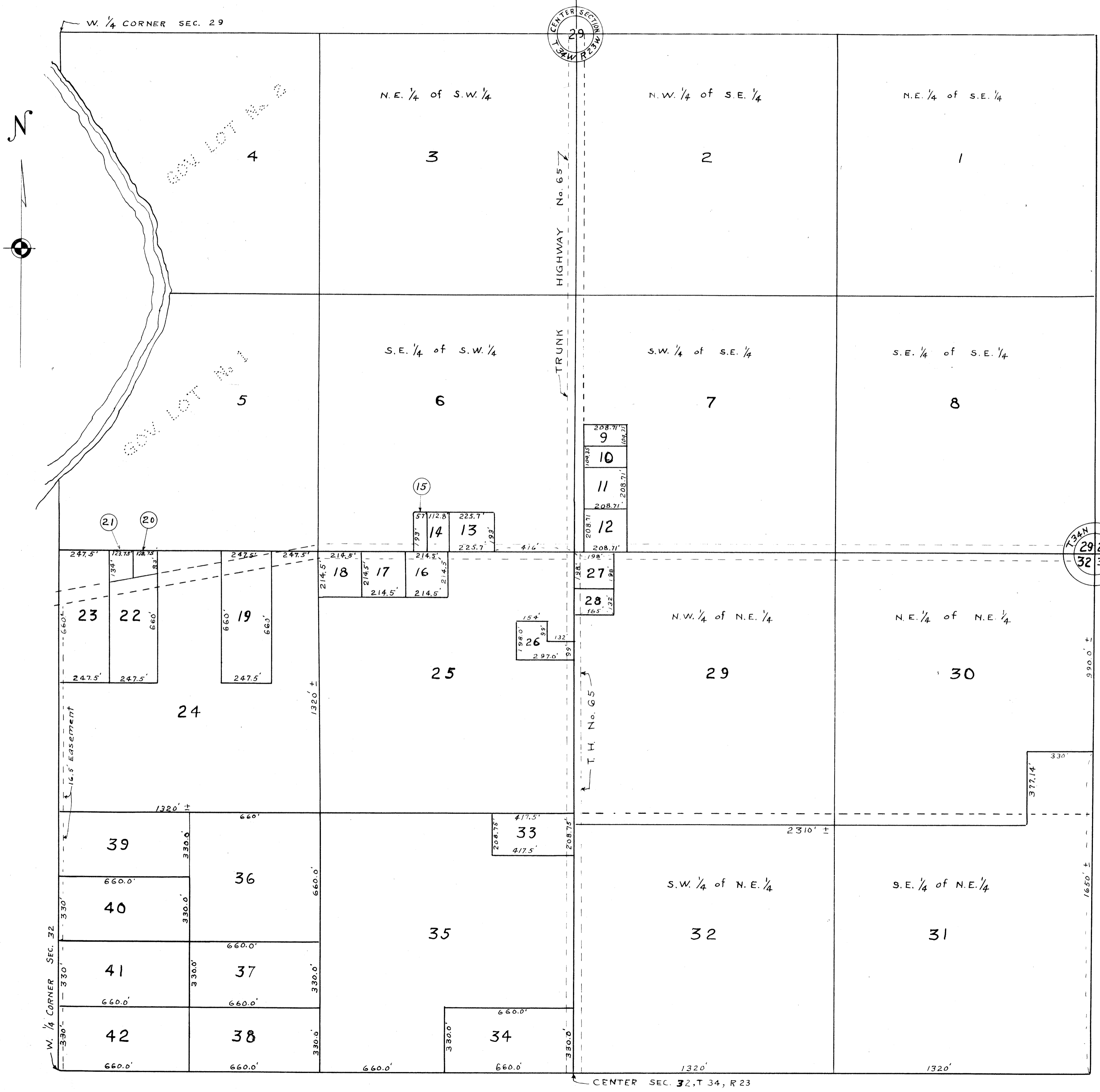


(Original)

AUDITOR'S SUBDIVISION No. 130

SCALE 1" = 300'



I hereby certify that in accordance with Section 2219 Chapter 11 General Statutes of 1923 and as amended by Chapter 21 laws of 1935 and in accordance with the order of the County Auditor of Anoka County, Minnesota, I have platted the following described land in Anoka County State of Minnesota to-wit: the South half (S 1/2) of Section 29 and the North half of Section 32 both in Township 34, Range 23 Bethel Township. That the plat on this sheet is a correct delineation of said platting and is to be known as AUDITOR'S SUBDIVISION No. 130 and distances are shown in feet and decimals of a foot and the measurements and divisions shown hereon conform to those stated in the instruments of conveyance describing the lots hereon shown.

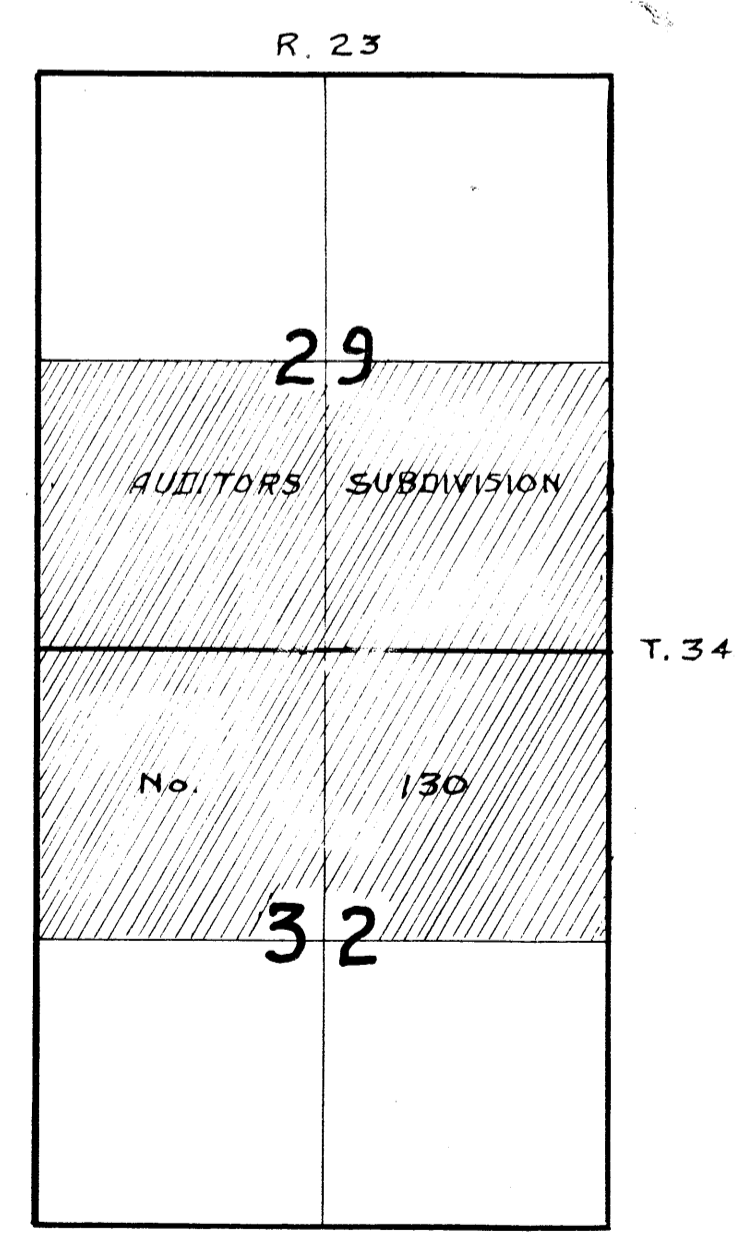
Sept 5-1950
Dated

R. Streetly
Registered Engineer No. 378

I E.A. Carlson, County Auditor of Anoka County Minnesota hereby certify that I have notified the owners of the land described in the foregoing certificate, to plat the same and a reasonable time having elapsed since the service of said notice and request, I have caused the same to be platted in accordance with Section 2219 Chapter 11 General Statutes of 1923 and as amended by Chapter 21 laws of 1935, and in accordance with the plat on this sheet, and the same to be known as AUDITOR'S SUBDIVISION No. 130.

9-5-50
Dated

E.A. Carlson
County Auditor Anoka Co. Minn.
By D. Hanstad, Deputy



13625
OFFICE OF REGISTER OF DEEDS,
STATE OF MINNESOTA, COUNTY OF ANOKA
I hereby certify that the within and true copy was filed in this office on the 16 day of SEP 1950 at 2 o'clock P.M. and was duly recorded in book A page 16
Eva Brandell
Register of Deeds
Genevieve, Deputy

