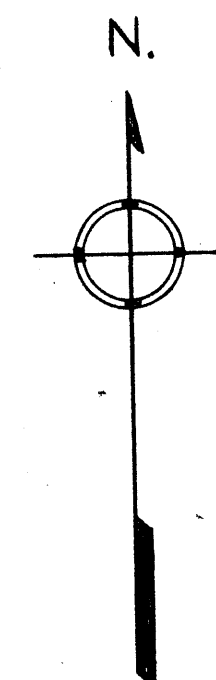
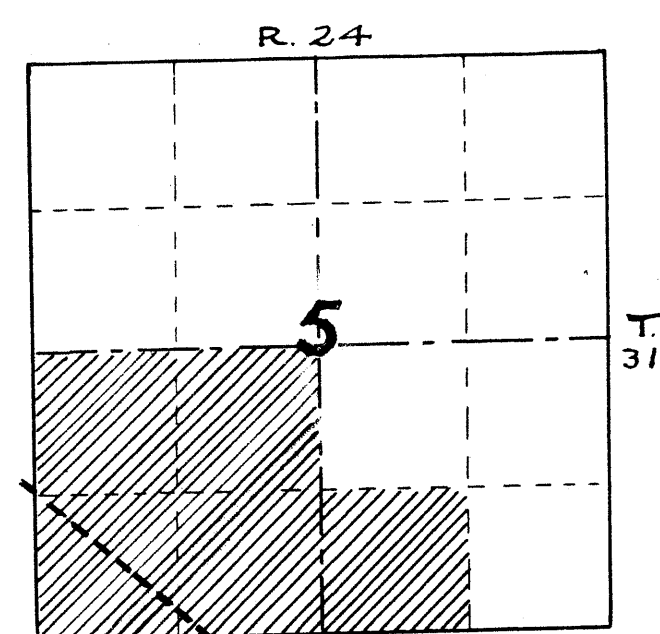
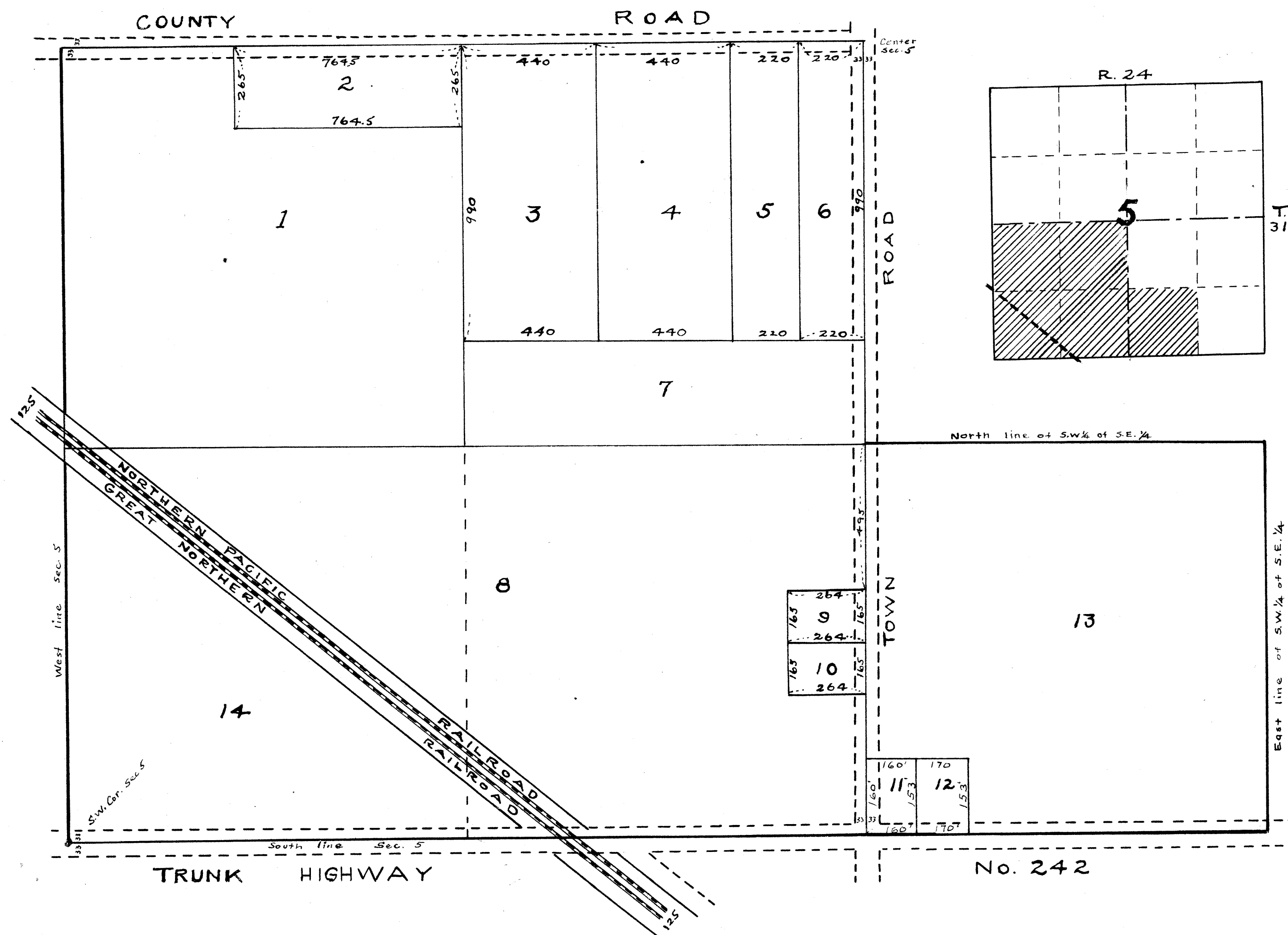


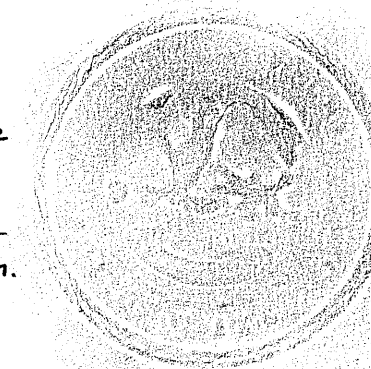
AUDITOR'S SUBDIVISION No. 136.



Scale: 1 inch=300 feet.

I, Kenneth W. Campbell, County Auditor of Anoka County, hereby certify that pursuant to Minnesota Statutes of 1923, Section 2219, Chapter 11 and as amended by Chapter 494, Laws of 1947, I have caused the annexed plat, as described in the Engineer's certificate, to be prepared and the same to be known as "AUDITOR'S SUBDIVISION Number 136,"

Kenneth W. Campbell
Dated 1-10-52
County Auditor, Anoka County, Minn.



I hereby certify that in accordance with Section 2219, Chapter 11, General Statutes of 1923 and as amended by Chapter 494, Laws of 1947 and in accordance with the order of the County Auditor of Anoka County, Minnesota made pursuant to the resolution of the Board of County Commissioners for Anoka County, Minnesota, Dated 10-8-51 I have platted the following described land in said Anoka County, to-wit: the South-West one-quarter and the South-west one-quarter of the Southeast one-quarter, all in Section 5, Township 31, Range 24; that this plat is a correct delineation of said platting and is to be known as "AUDITOR'S SUBDIVISION Number 136" and distances are shown in feet and decimals of a foot and conform to those stated in the instruments of conveyance.

R. J. Sheehy
Dated 1-10-52
Registered Engineer No. 318

11209

142660

Office of REGISTRAR OF TITLES
STATE OF MINNESOTA
COUNTY OF ANOKA

I hereby certify that the within instrument was filed in this office on the 4th day of JAN 4 1952, day of JAN 4 1952, at 3:45 P.M.

Julius Bremer Registrar of Titles
DEPUTY REGISTRAR OF TITLES

OFFICE OF REGISTER OF DEEDS,
STATE OF MINNESOTA, COUNTY OF ANOKA

I hereby certify that the within instrument was filed in this office for record on the 14th day of JANUARY, A. D. 1952 at 2:45 o'clock P.M., and the copy recorded in book 771 of 1952, page 18

Julius Bremer
Register of Deeds