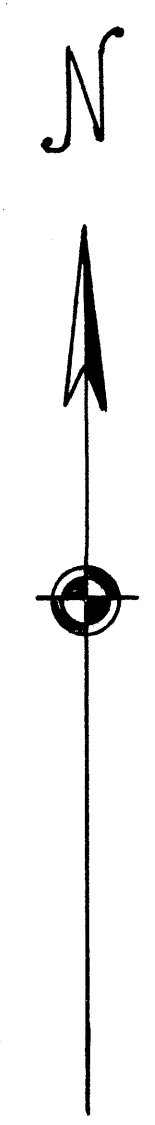
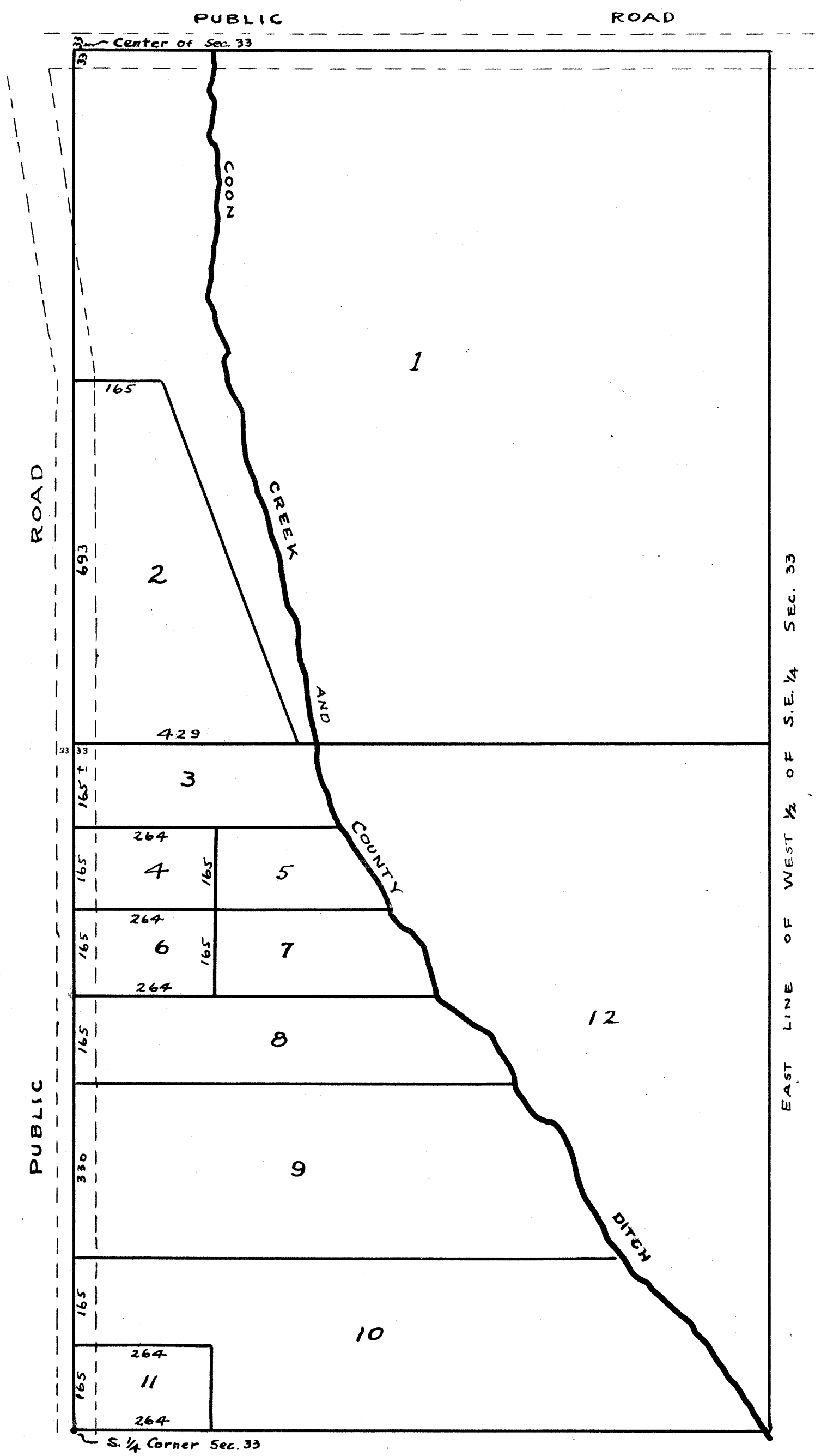
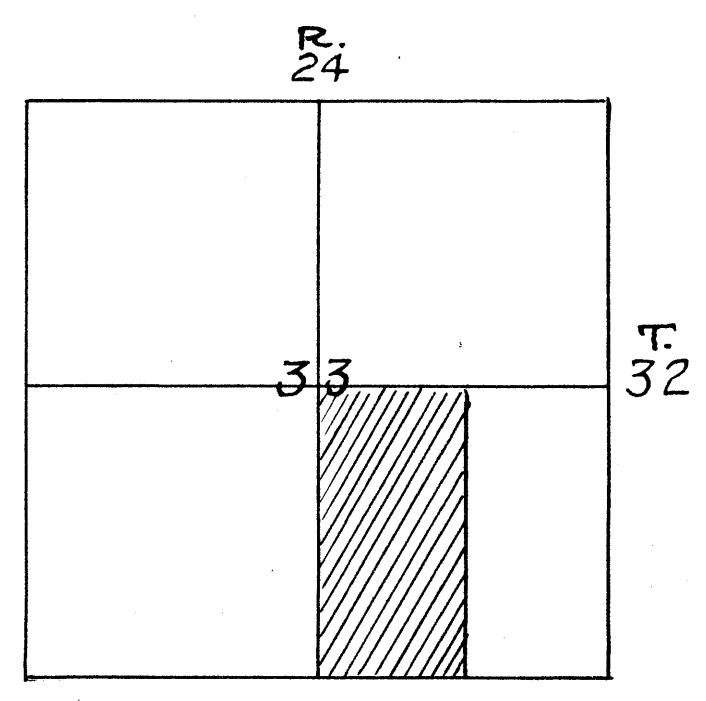


# AUDITOR'S SUBDIVISION No. 137



SCALE: 1 INCH = 200 FEET



I Kenneth W. Campbell, County Auditor of Anoka County hereby certify that pursuant to Minnesota Statutes of 1923, Section 2219, Chapter 11 and as amended by Chapter 494, Laws of 1947, I have caused the annexed plat, as described in the Engineer's certificate to be prepared and the same to be known as "Auditor's Subdivision Number 137."

1-10-52  
Dated

*Kenneth W. Campbell*  
County Auditor, Anoka County, Minn.



I hereby certify that in accordance with Section 2219 Chapter 11 General Statutes of 1923 and as amended by Chapter 494, Laws of 1947 and in accordance with the order of the County Auditor of Anoka County, Minnesota made pursuant to the resolution of the Board of County Commissioners for Anoka County, Minnesota Dated 10-8-51 I have platted the following described land in the County of Anoka, State of Minnesota, to-wit: the West one-half of Southeast one-quarter of Section 33, Township 32, Range 24; that this plat is a correct delineation of said plotting and is to be known as "AUDITOR'S SUBDIVISION Number 137" and distances are shown in feet and decimals of a foot and conform to those stated in the instruments of conveyance.

1-10-52  
Dated

*R. Streetly*  
Registered Engineer No. 378

142658

OFFICE OF REGISTER OF DEEDS,  
STATE OF MINNESOTA, COUNTY OF ANOKA  
I hereby certify that the within instrument was filed in this office for record on the 14th day of January, A. D. 1952 at 11:22 o'clock P.M., and was duly recorded in book M. P. Plat, page 17  
*J. J. [Signature]*  
Register of Deeds