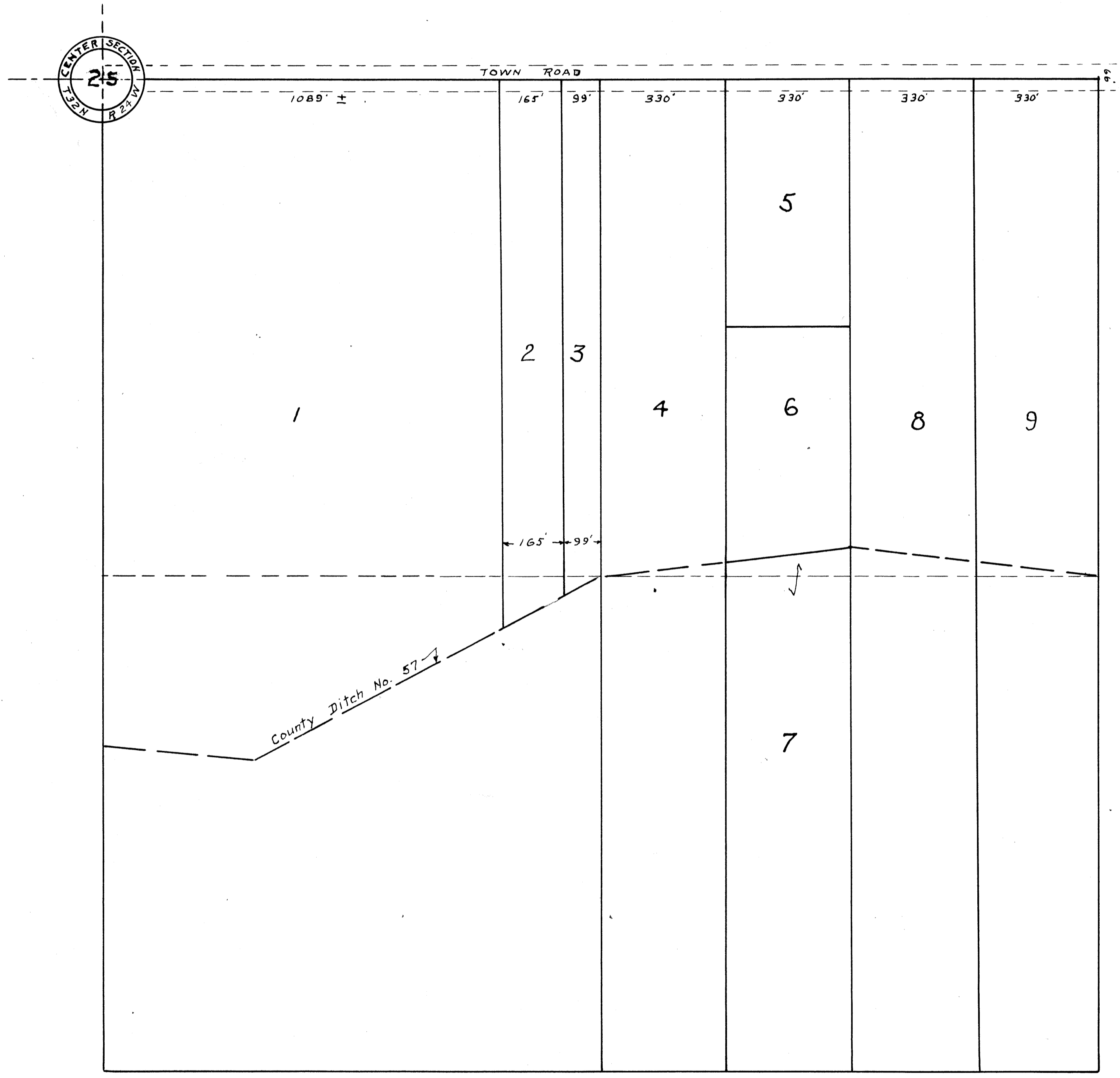


AUDITOR'S SUBDIVISION No. 141

scale 1" = 200'



I hereby certify that in accordance with Section 2219, Chapter 11 General Statutes of 1923 and as amended by Chapter 21 Laws of 1935 and in accordance with the order of the County Auditor of Anoka, Co. Minnesota, I have platted the following described property in Anoka County, Minnesota, to-wit: all of the S.E. one-quarter of Section 25, Township 32 N, Range 24 W; that this plat is a correct delineation of said platting and is to be known as AUDITOR'S SUBDIVISION No. 141 and that all distance are shown in feet and decimals of a foot and conform to those shown in the instruments of conveyance.

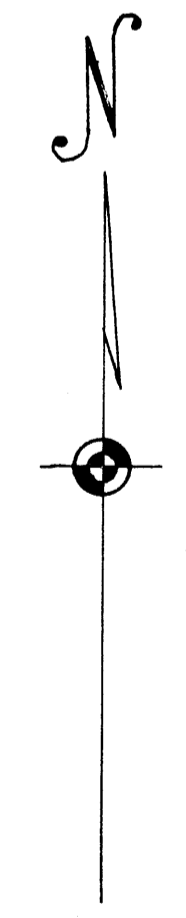
Apr 17-1952
Dated

R. B. Streetly
Registered Engineer No. 378

I Kenneth W. Campbell, County Auditor of Anoka County Minnesota, hereby certify that I have notified the owners of the land described in the foregoing Engineers certificate, to plat the same, and a reasonable time having elapsed since the service of said notice and request, I have caused the same to be platted in accordance with Section 2219 General Statutes of 1923 and as amended by Chapter 21 Laws of 1935 and the same to be known as "AUDITOR'S SUBDIVISION No. 141"

Apr 17-1952
Dated

Kenneth W. Campbell
County Auditor Anoka County Minnesota.
By J. H. Bremer, Deputy



143679

OFFICE OF REGISTER OF DEEDS,
STATE OF MINNESOTA, COUNTY OF ANOKA }
I hereby certify that the within instrument was filed in this office for record on the APR 23 day of APRIL, 1952 A. D. 1952 at 4 o'clock P.M., and was duly recorded in book M of State page 21.
Georgina J. Rasmussen
Register of Deeds