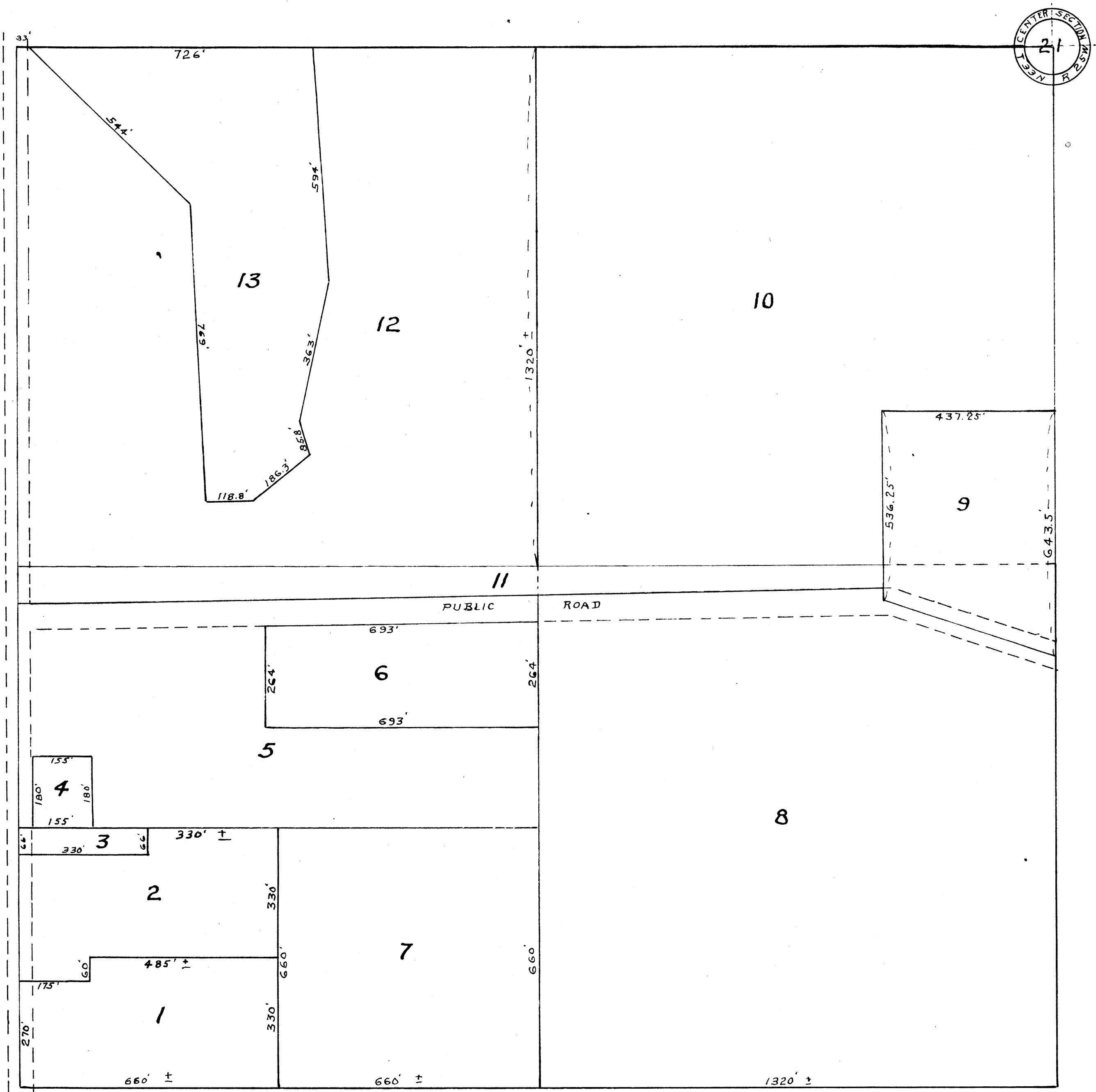


AUDITORS' SUBDIVISION No. 146

SCALE 1" = 200'



I hereby certify that in accordance with Section 2219, Chapter 11 General Statutes of 1923 and as amended by Chapter 21 Laws of 1935, and in accordance with the order of the County Auditor of Anoka County, Minnesota, I have platted the following described land in the County of Anoka and the State of Minnesota to-wit: - the S.W. 1/4 of Section 21, Township 33, Range 25, that the plat on this sheet is a correct delineation of said platting and all distances are shown in feet and decimals of a foot and conform to those stated in the instruments of conveyance, and is to be known as AUDITORS' SUBDIVISION No. 146.

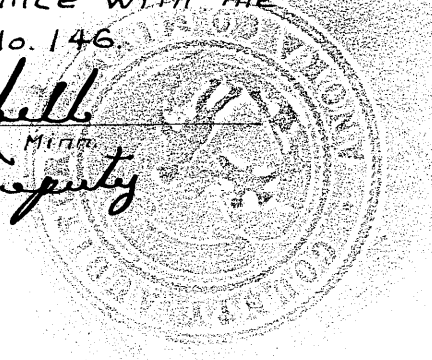
Sept 8-1952
dated

R. Streetly
Registered Engineer No. 378

I Kenneth W. Campbell County Auditor of Anoka County, Minnesota, hereby certify that I have notified the owners of land described in the foregoing engineers certificate, to plat the same and a reasonable time having elapsed since the service of said notice and request, I have caused the same to be platted in accordance with Section 2219 Chapter 11 General Statutes of 1923 and as amended by Chapter 21 Laws of 1935, and in accordance with the plat on this sheet, and the same to be known as AUDITORS' SUBDIVISION No. 146.

9-8-52
dated

Kenneth W. Campbell
County Auditor Anoka County, Minn.
by *J. P. Peterson*, Deputy



146222
OFFICE OF REGISTER OF DEEDS,
STATE OF MINNESOTA, COUNTY OF ANOKA
I hereby certify that the within instrument was filed in this office for record on the day of SEP. 29, 1952 at 4 o'clock P.M. and was duly recorded in book M. of STATE page 26
Samuel J. Bremer
Register of Deeds