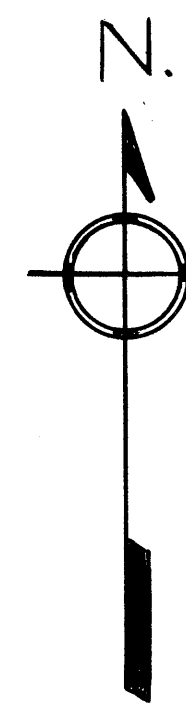
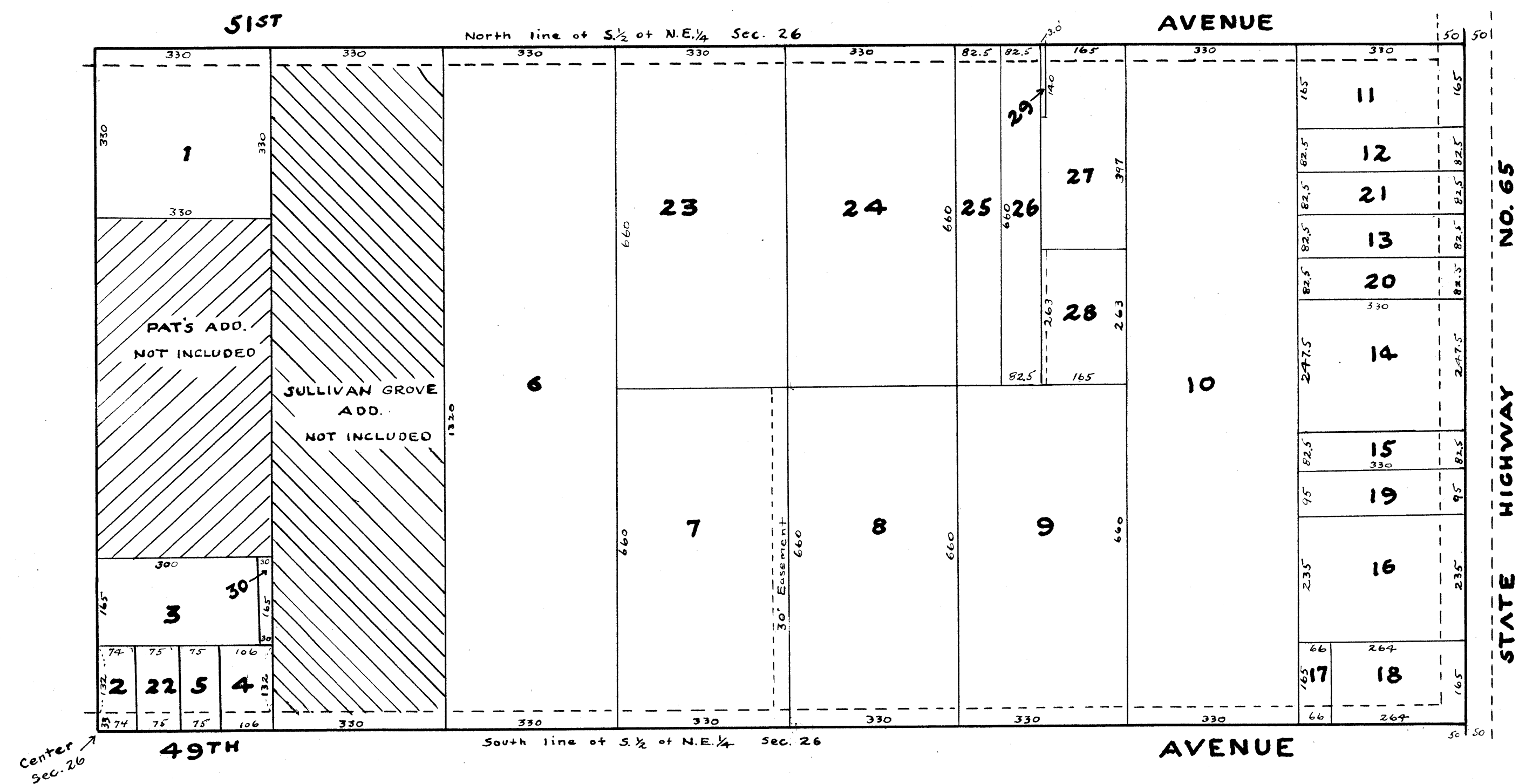
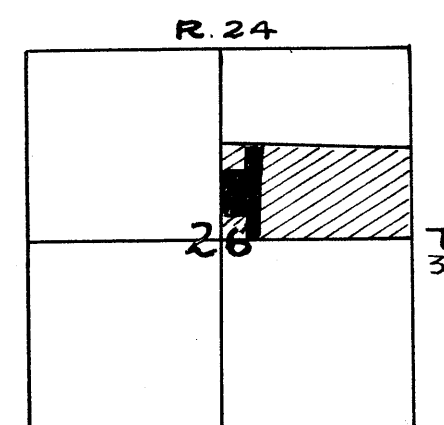


original

REVISED AUDITOR'S SUBDIVISION NUMBER 15.



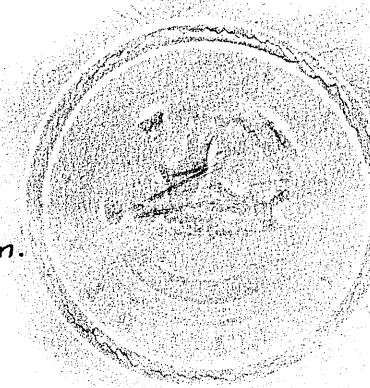
Scale: 1 inch = 200 feet



I Kenneth W. Campbell, County Auditor of Anoka County, Minnesota, hereby certify that pursuant to Minnesota Statutes of 1923, Section 2219 as amended by Chapter 494 Laws of 1947, I have caused the annexed plat, as described in the Engineer's certificate, to be platted and the same to be known as "REVISED AUDITOR'S SUBDIVISION NUMBER 15."

1-10-52
Dated.

Kenneth W. Campbell
County Auditor Anoka County, Minn.



I hereby certify that in accordance with Section 2219, Chapter 11, General Statutes of 1925 and as amended by Chapter 494, Laws of 1947 and in accordance with the order of the County Auditor of Anoka County Minnesota, made pursuant to the resolution of the Board of County Commissioners for said Anoka County, Dated 10-8-51 I have platted the following described land in said Anoka County, to-wit: the South one-half of Northeast one-quarter (S. 1/2 of N.E. 1/4) of Section Twenty-six (26) Township 30, Range 24 and known as Auditor's Subdivision No. 15; that the annexed plat is a correct delineation of said platting and is to be known as "REVISED AUDITOR'S SUBDIVISION NUMBER 15" and distances are shown in feet and decimals of a foot and conform to those shown on the original Subdivision and to those stated in the instruments of conveyance.

1-10-52
Dated

R. Streetly
Registered Engineer No. 378

11209 1/2

Office of REGISTRAR OF TITLES
STATE OF MINNESOTA
COUNTY OF ANOKA

I hereby certify that the within instrument was filed in this office on the 14th day of January, A. D. 1952 at 2:45 o'clock P.M., and was duly recorded in book 19 page 19

Genevieve Rimmer
DEPUTY REGISTRAR OF TITLES

142661

OFFICE OF REGISTER OF DEEDS,
STATE OF MINNESOTA, COUNTY OF ANOKA

I hereby certify that the within instrument was filed in this office for record on the 14th day of January, A. D. 1952 at 2:45 o'clock P.M., and was duly recorded in book 19 page 19

Genevieve Rimmer
Register of Deeds