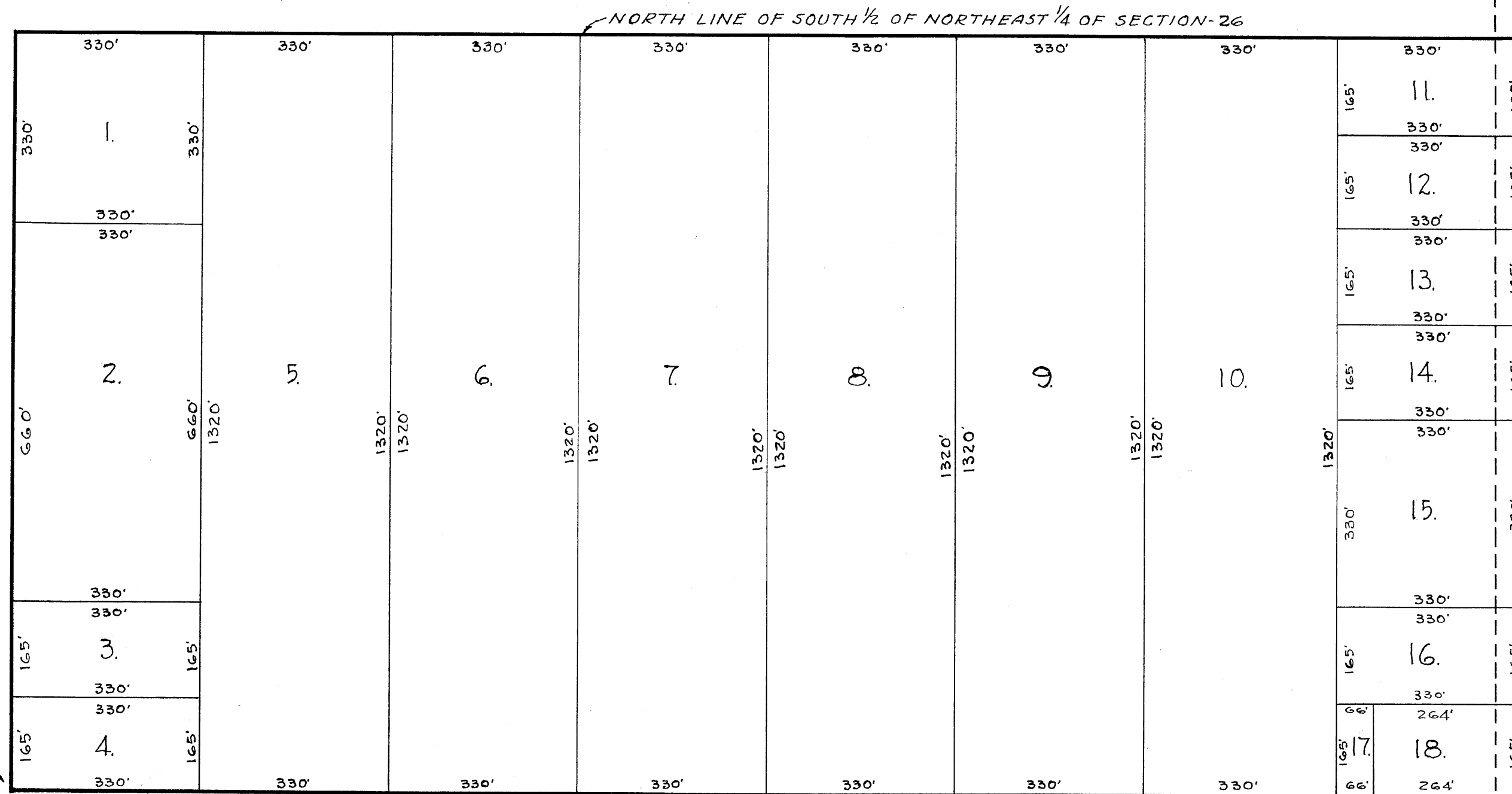
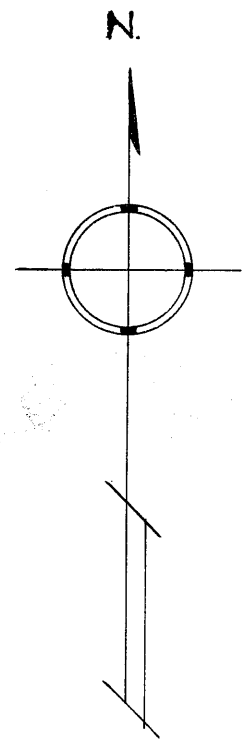


AUDITOR'S SUBDIVISION NUMBER 15

ORIGINAL

SCALE 1" = 200'

OFFICE OF REGISTER OF DEEDS,
STATE OF MINNESOTA, COUNTY OF ANOKA } ss
I hereby certify that the within instrument was filed in this office for record on the 9th day of Feb. A.D. 1939 at 9 o'clock A.M. and was duly recorded in book 27, Plate 7 page 7
G. W. B. ...
Register of Deeds.



(ROSLYN PARK ADDITION)

CENTER OF SECTION-26

(VALLEY VIEW HEIGHTS ADDITION)

I HEREBY CERTIFY THAT IN ACCORDANCE WITH SECTION 2219 CHAPTER 11 GENERAL STATUTES OF 1923 AND AS AMENDED BY CHAPTER 21 LAWS OF 1935, AND IN ACCORDANCE WITH THE ORDER OF THE COUNTY AUDITOR OF ANOKA COUNTY MINNESOTA, I HAVE PLATTED THE FOLLOWING DESCRIBED LAND IN THE COUNTY OF ANOKA AND THE STATE OF MINNESOTA, TO WIT: THE SOUTH 1/2 OF THE NORTHEAST 1/4 OF SECTION 26 TOWNSHIP 30 RANGE 24, THAT THE PLAT ON THIS SHEET IS A CORRECT DELINEATION OF SAID PLATTING AND TO BE KNOWN AS AUDITOR'S SUBDIVISION NUMBER 15, AND THAT ALL DISTANCES ARE SHOWN IN FEET AND DECIMALS OF A FOOT.

DATED Feb. 8th, 1939

Wayne L. Ridge
COUNTY SURVEYOR
ANOKA COUNTY MINNESOTA.

ABOVE CERTIFICATE SUBSCRIBED AND SWORN TO BEFORE ME THIS 8th DAY OF FEBRUARY — 1939.

Harold E. Nelson
CLERK OF DISTRICT COURT
ANOKA COUNTY MINNESOTA.

I, E. A. CARLSON, COUNTY AUDITOR OF ANOKA COUNTY MINNESOTA, HEREBY CERTIFY THAT I HAVE NOTIFIED THE OWNERS OF THE LAND DESCRIBED IN THE FOREGOING COUNTY SURVEYOR'S CERTIFICATE TO PLAT THE SAME, AND A REASONABLE TIME HAVING ELAPSED SINCE SERVICE OF SAID NOTICE AND REQUEST, I HAVE CAUSED SAME TO BE PLATTED IN ACCORDANCE WITH SECTION 2219 CHAPTER 11 GENERAL STATUTES OF 1923 AND AS AMENDED BY CHAPTER 21 LAWS OF 1935, AND IN ACCORDANCE WITH THE PLAT ON THIS SHEET, AND SAME TO BE KNOWN AS AUDITOR'S SUBDIVISION NUMBER 15.

DATED Feb. 8th, 1939

E. A. Carlson
COUNTY AUDITOR
ANOKA COUNTY MINNESOTA.

ABOVE CERTIFICATE SUBSCRIBED AND SWORN TO BEFORE ME THIS 8th DAY OF FEBRUARY 1939.

Harold E. Nelson
CLERK OF DISTRICT COURT
ANOKA COUNTY MINNESOTA.