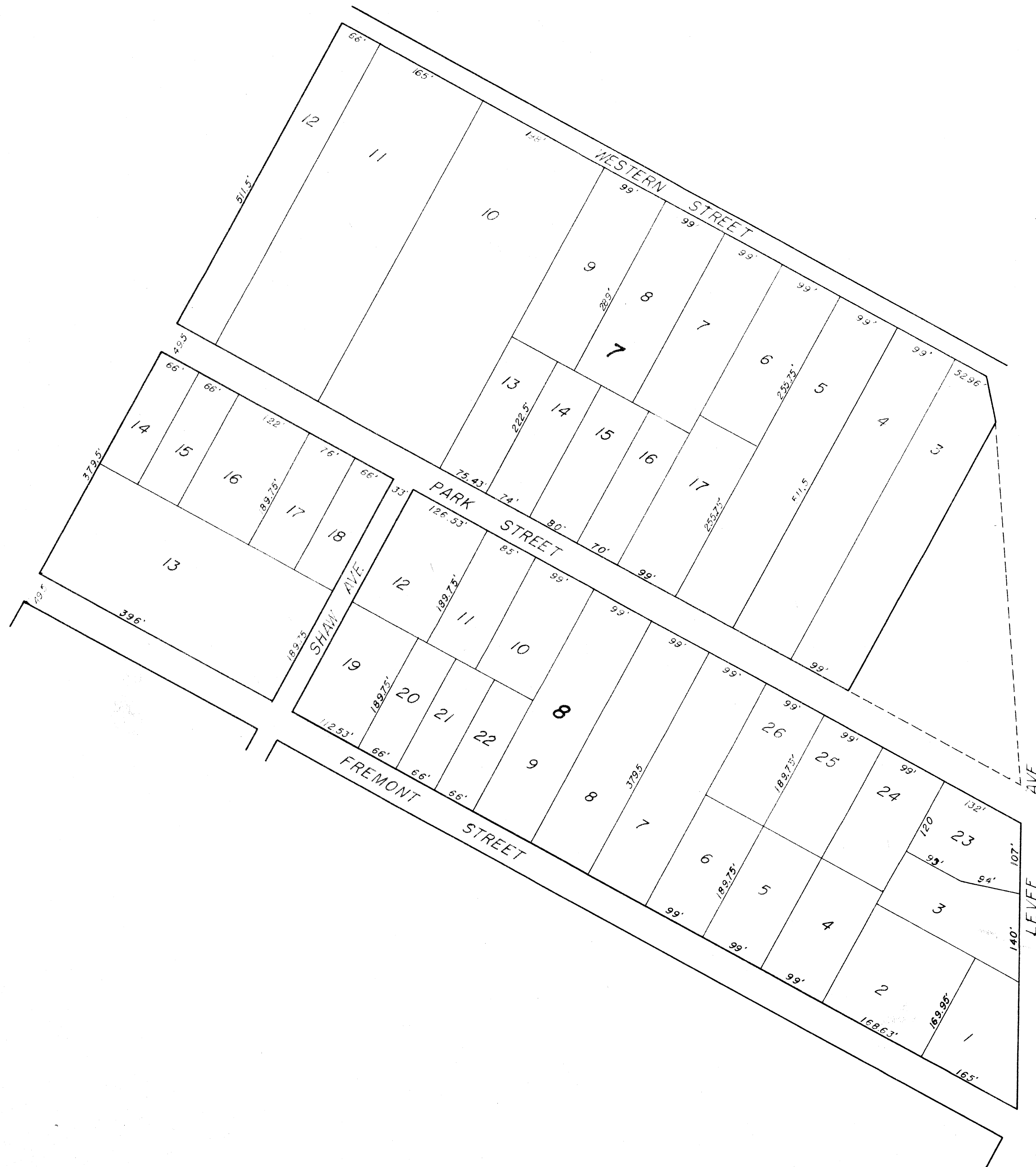


original

AUDITOR'S SUBDIVISION No. 156

SCALE 1"=100'



I HEREBY CERTIFY THAT IN ACCORDANCE WITH SECTION 2219, CHAPTER 11, GENERAL STATUTES OF 1923, AND AS AMENDED BY CHAPTER 21, LAWS OF 1935, AND IN ACCORDANCE WITH THE ORDER OF THE COUNTY AUDITOR OF ANOKA COUNTY, MINNESOTA, I HAVE PLATTED THE FOLLOWING DESCRIBED LANDS IN THE COUNTY OF ANOKA, AND THE STATE OF MINNESOTA, TO-WIT: BLOCKS 7 & 8, N.D. SHAW'S ADDITION TO ANOKA, MINNESOTA, THAT THE PLAT ON THIS SHEET IS A CORRECT DELINEATION OF SAID PLATTING AND IS TO BE KNOWN AS AUDITOR'S SUBDIVISION No. 156 AND ALL DISTANCES ARE SHOWN IN FEET AND DECIMALS OF A FOOT AND CONFORM TO THOSE SPECIFIED IN THE INSTRUMENTS OF CONVEYANCE.

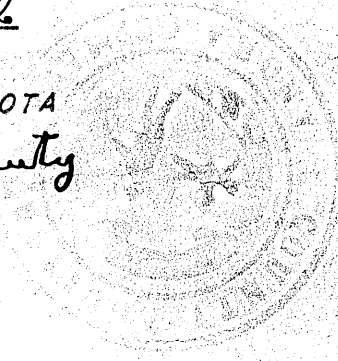
Aug 17-53
DATE

R. B. Streetly
REG. ENGR. No. 378

I, KENNETH W. CAMPBELL, COUNTY AUDITOR OF ANOKA COUNTY, MINNESOTA, HEREBY CERTIFY THAT I HAVE NOTIFIED THE OWNERS OF THE LAND DESCRIBED IN THE FOREGOING ENGINEER'S CERTIFICATE, TO PLAT THE SAME AND A REASONABLE TIME HAVING ELAPSED SINCE THE SERVICE OF SAID NOTICE AND REQUEST, I HAVE CAUSED THE SAME TO BE PLATTED IN ACCORDANCE WITH SECTION 2219, CHAPTER 11, GENERAL STATUTES OF 1923, AND AS AMENDED BY CHAPTER 21, LAWS OF 1935, AND IN ACCORDANCE WITH THE PLAT ON THIS SHEET, AND THE SAME TO BE KNOWN AS AUDITOR'S SUBDIVISION No. 156.

Aug 12-53
DATE

Kenneth W. Campbell
COUNTY AUDITOR
ANOKA COUNTY, MINNESOTA
R. D. Peterson, Deputy



152052

OFFICE OF REGISTER OF DEEDS,
STATE OF MINNESOTA, COUNTY OF ANOKA

I hereby certify that the within instrument was filed in this office for record on the day of AUG. 14. 1953 A. D. 1953 at 1 o'clock P. M., and was duly recorded in Book 9 of Plates, page 9.

Estelle Renner
Register of Deeds