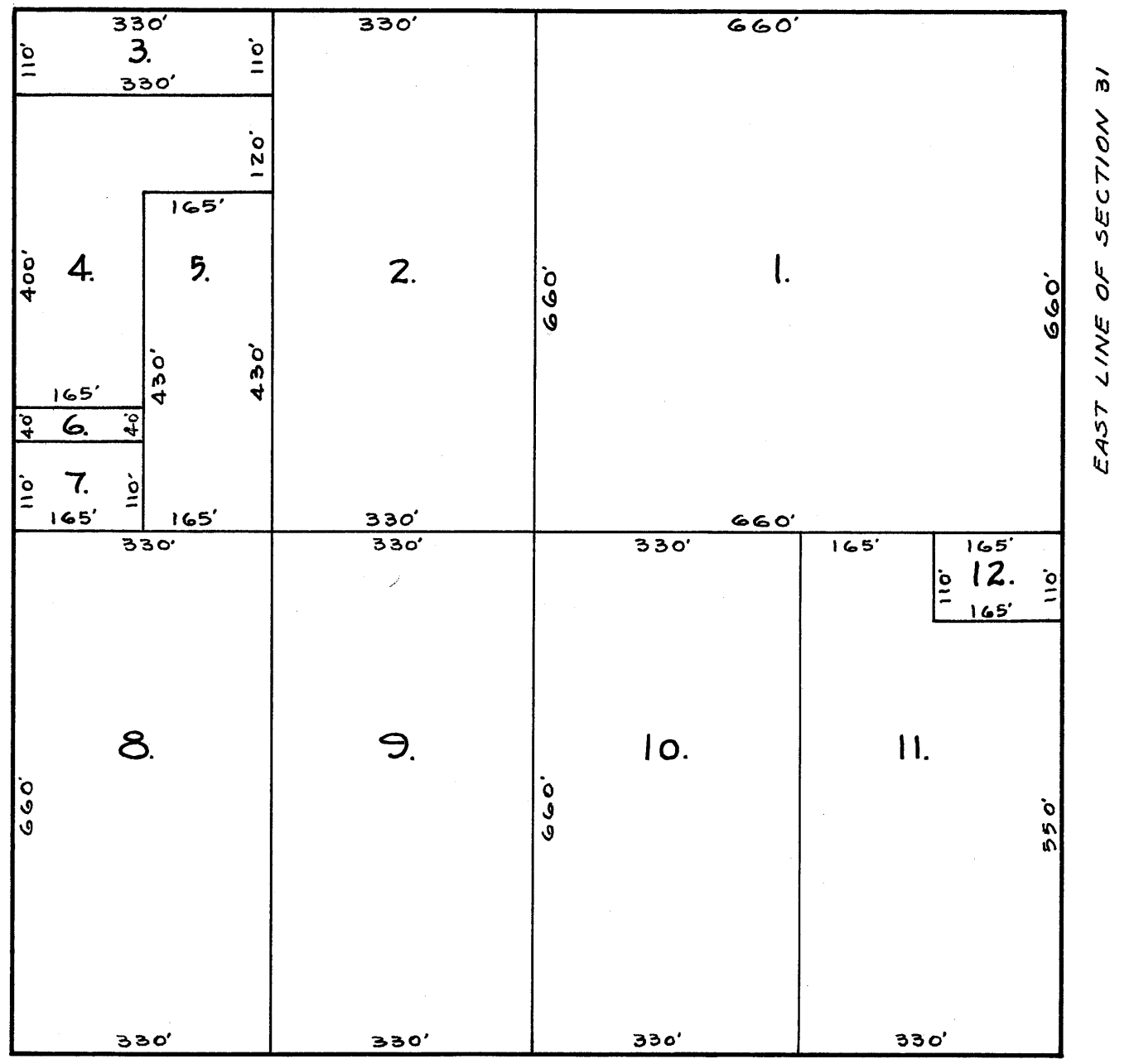
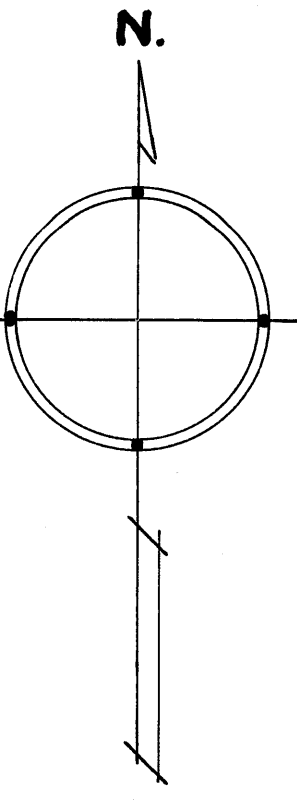


I hereby certify that the within instrument was filed in this office for record on the 29 day of May, A.D. 1939, at 9 o'clock A.M. and was duly recorded in book 7 of Plats, page 12.  
Eva Brundell  
Register of Deeds.

# AUDITOR'S SUBDIVISION NUMBER 19

SCALE 1"=200'



I, HEREBY CERTIFY THAT IN ACCORDANCE WITH SECTION 2219 CHAPTER 11 GENERAL STATUTES OF 1923 AND AS AMENDED BY CHAPTER 21 LAWS OF 1935, AND IN ACCORDANCE WITH THE ORDER OF THE COUNTY AUDITOR OF ANOKA COUNTY MINNESOTA I HAVE PLATTED THE FOLLOWING DESCRIBED LAND IN THE COUNTY OF ANOKA AND THE STATE OF MINNESOTA TO WIT: THE SE 1/4 OF THE SE 1/4 OF SECTION 31, TOWNSHIP 31 RANGE 23, THAT THE PLAT ON THIS SHEET IS A CORRECT DELINEATION OF SAID PLATTING AND TO BE KNOWN AS AUDITORS SUBDIVISION NUMBER 19 AND THAT ALL DISTANCES ARE SHOWN IN FEET AND DECIMALS OF A FOOT.

DATED May 23rd, 1939.

Wayne L. Ridge  
COUNTY SURVEYOR  
ANOKA COUNTY MINNESOTA.

ABOVE CERTIFICATE SUBSCRIBED AND SWORN TO BEFORE ME THIS 23<sup>rd</sup> DAY OF May 1939.

Theo. A. Nelson  
Clerk of District Court  
Anoka County, Minnesota

I, E.A. CARLSON, COUNTY AUDITOR OF ANOKA COUNTY MINNESOTA, HEREBY CERTIFY THAT I HAVE NOTIFIED THE OWNERS OF THE LAND DESCRIBED IN THE FOREGOING COUNTY SURVEYORS CERTIFICATE TO PLAT THE SAME AND A REASONABLE TIME HAVING ELAPSED SINCE THE SERVICE OF SAID NOTICE AND REQUEST, I HAVE CAUSED SAME TO BE PLATTED IN ACCORDANCE WITH SECTION 2219 CHAPTER 11 GENERAL STATUTES OF 1923 AND AS AMENDED BY CHAPTER 21 LAWS OF 1935, AND IN ACCORDANCE WITH THE PLAT ON THIS SHEET, AND SAME TO BE KNOWN AS AUDITORS SUBDIVISION NUMBER 19.

DATED May 23rd 1939

E.A. Carlson  
COUNTY AUDITOR  
ANOKA COUNTY MINNESOTA.

ABOVE CERTIFICATE SUBSCRIBED AND SWORN TO BEFORE ME THIS 23<sup>rd</sup> DAY OF May 1939.

Theo. A. Nelson  
Clerk of District Court  
Anoka County, Minnesota

LEGEND	
LOTS AND BLOCKS BELOW REFERED TO, WERE FORMERLY IN VILAS CITY WHICH WAS VACATED BY COURT ORDER JUDGMENT ENTERED JANUARY 4, 1898 AND APRIL 21, 1900.	
AUDITORS SUBDIVISION NUMBER 19.	FORMER DESCRIPTION IN VILAS CITY PLATTED LANDS.
LOT 1	(NE 1/4 OF SE 1/4 OF SE 1/4) LOTS 1 TO 30 INCL. IN BLOCKS 58 & 59.
LOT 2	LOTS 1 TO 30 INCL. BLOCK 60
LOT 3	LOTS 1, 2, 29 & 30 BLOCK 61
LOT 4	LOTS 3, 4, 5, & 19 TO 28 INCL. BLOCK 61
LOT 5	LOTS 6 TO 15 INCL. BLOCK 61
LOT 6	LOT 18 BLOCK 61
LOT 7	LOTS 16 & 17 BLOCK 61
LOT 8	LOTS 1 TO 30 BLOCK 62.
LOT 9	(E 1/2 OF SW 1/4 OF SE 1/4 OF SE 1/4) LOTS 1 TO 30 INCL. BLOCK 63
LOT 10	LOTS 1 TO 30 INCL. BLOCK 64.
LOT 11	LOTS 3 TO 30 INCL. BLOCK 65
LOT 12	LOTS 1 AND 2 BLOCK 65