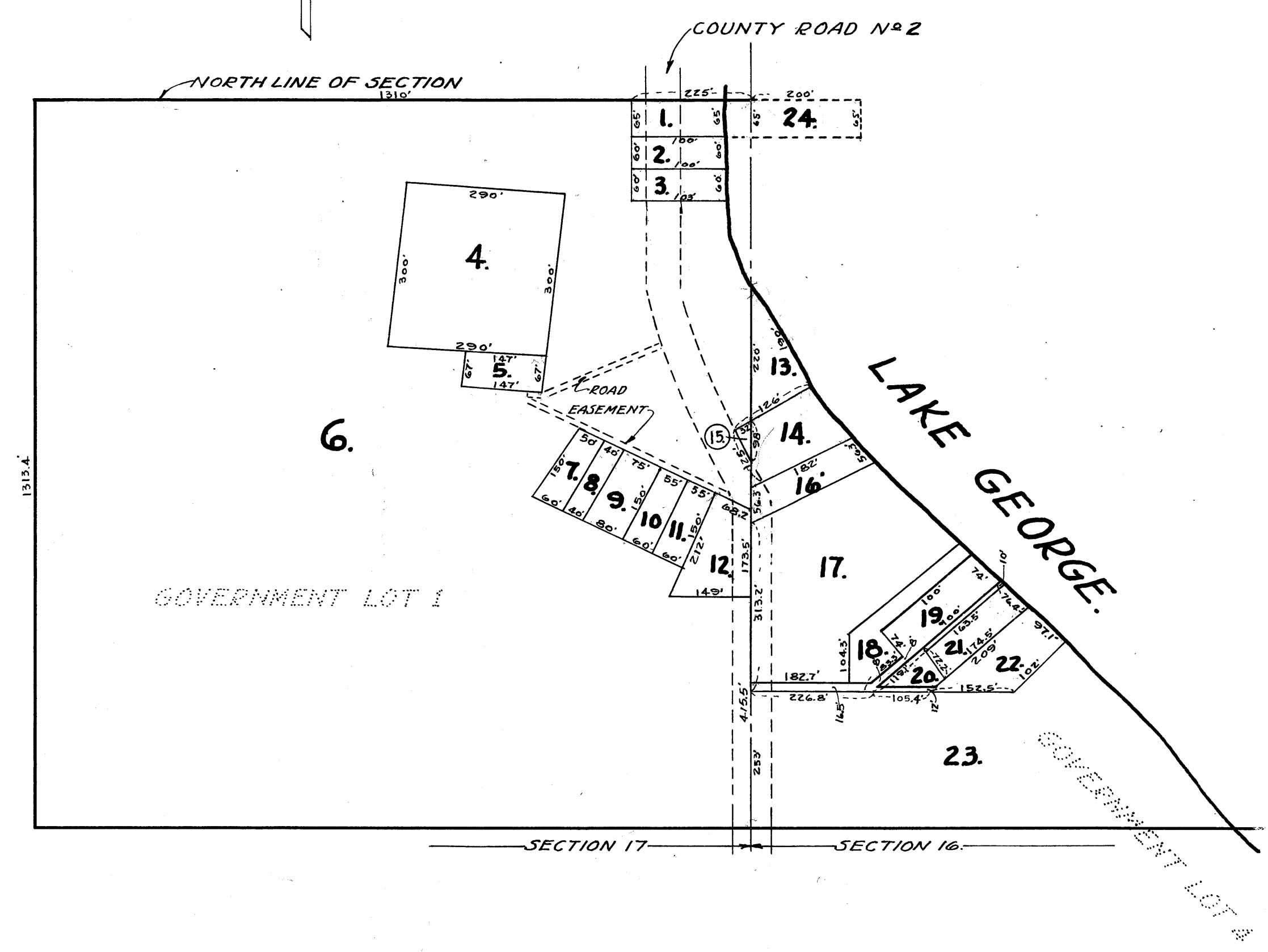
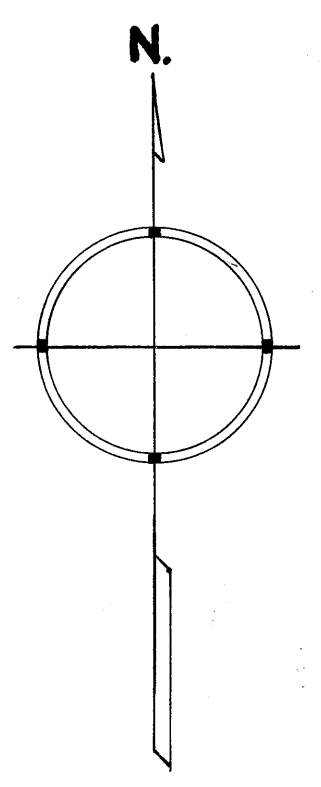


OFFICE OF REGISTER OF DEEDS,
 STATE OF MINNESOTA, COUNTY OF ANOKA }
 I hereby certify that the within instru-
 ment was filed in this office for record on
 the 4th day of October, A.D. 1939
 at 9:20 o'clock A.M. and was duly re-
 corded in book 2 of Plats, page 13

 Register of Deeds.

AUDITOR'S SUBDIVISION NUMBER 20

SCALE 1" = 200'



I HEREBY CERTIFY THAT IN ACCORDANCE WITH SECTION 2219 CHAPTER 11 GENERAL STATUTES OF 1923 AND AS AMENDED BY CHAPTER 21 LAWS OF 1935, AND IN ACCORDANCE WITH THE ORDER OF THE COUNTY AUDITOR OF ANOKA COUNTY MINNESOTA, I HAVE PLATTED THE FOLLOWING DESCRIBED LAND IN THE COUNTY OF ANOKA AND THE STATE OF MINNESOTA TO WIT: GOVERNMENT LOT 1, SECTION 17, AND THAT PART OF GOVERNMENT LOT 4 SECTION 16 WHICH IS DIRECTLY EAST OF GOVERNMENT LOT 1 SECTION 17, ALL BEING IN TOWNSHIP 33 RANGE 24, THAT THE PLAT ON THIS SHEET IS A CORRECT DELINEATION OF SAID PLATTING AND TO BE KNOWN AS AUDITOR'S SUBDIVISION NUMBER 20, AND THAT DISTANCES ARE SHOWN IN FEET AND DECIMALS OF A FOOT.

DATED Oct 4th 1939

Wayne L. Ridge
 COUNTY SURVEYOR
 ANOKA COUNTY MINNESOTA.

ABOVE CERTIFICATE SUBSCRIBED AND SWORN TO BEFORE ME THIS 4th DAY OF October 1939.

Thos. A. Nelson
 CLERK OF DIST. COURT
 ANOKA COUNTY, MINNESOTA.

I, E. A. CARLSON, COUNTY AUDITOR OF ANOKA COUNTY MINNESOTA, HEREBY CERTIFY THAT I HAVE NOTIFIED THE OWNERS OF THE LAND DESCRIBED IN THE FOREGOING COUNTY SURVEYOR'S CERTIFICATE TO PLAT THE SAME AND A REASONABLE TIME HAVING ELAPSED SINCE THE SERVICE OF SAID NOTICE AND REQUEST, I HAVE CAUSED SAME TO BE PLATTED IN ACCORDANCE WITH SECTION 2219 CHAPTER 11 GENERAL STATUTES OF 1923, AND AS AMENDED BY CHAPTER 21 LAWS OF 1935, AND IN ACCORDANCE WITH THE PLAT ON THIS SHEET, AND SAME TO BE KNOWN AS AUDITOR'S SUBDIVISION NUMBER 20.

DATED Oct 4 - 1939

E. A. Carlson
 COUNTY AUDITOR
 ANOKA COUNTY MINNESOTA.

ABOVE CERTIFICATE SUBSCRIBED AND SWORN TO BEFORE ME THIS 4th DAY OF October 1939.

Thos. A. Nelson
 CLERK OF DIST. COURT
 ANOKA COUNTY, MINNESOTA.