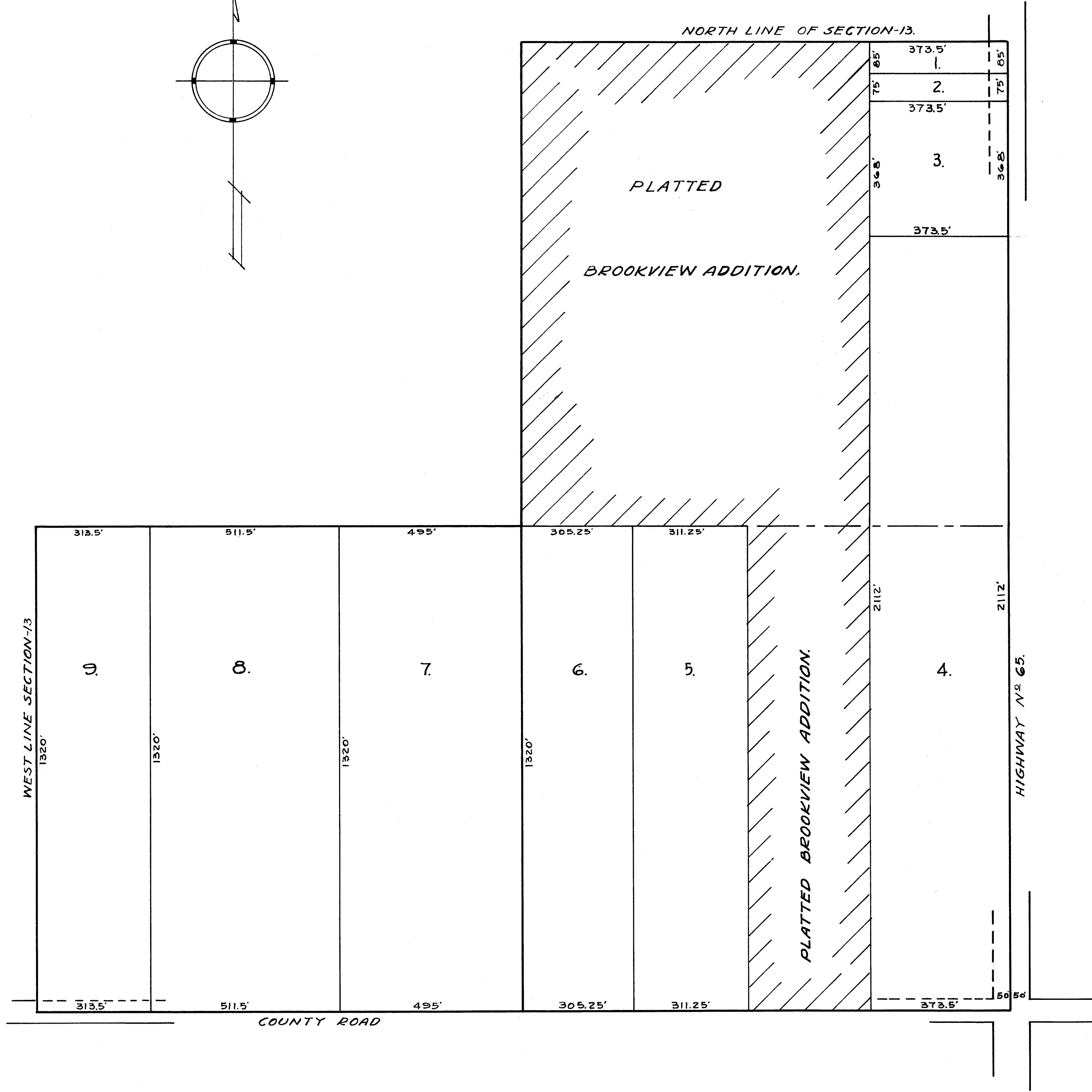
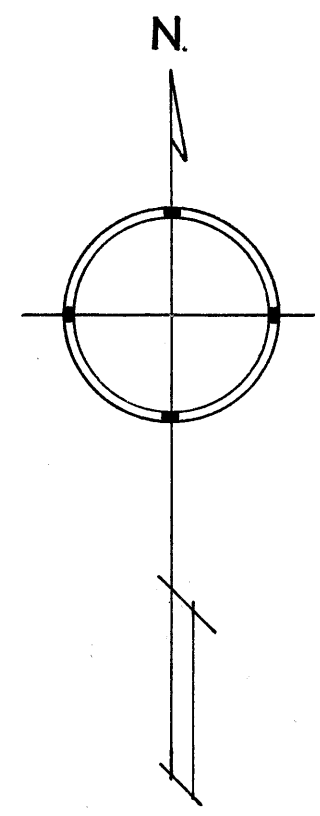


OFFICE OF REGISTER OF DEEDS,
STATE OF MINNESOTA, COUNTY OF ANOKA } 88
I hereby certify that the within instrument
was filed in this office for record on
the 23 day of May A.D. 1939
at 11:02 clock P.M. and was duly
recorded in book 117 of 1939, page 14
Gus Brandell
Register of Deeds

AUDITOR'S SUBDIVISION NUMBER 21

SCALE 1"=200'



I HEREBY CERTIFY THAT IN ACCORDANCE WITH SECTION 2219 CHAPTER 11 GENERAL STATUTES OF 1923 AND AS AMENDED BY CHAPTER 21 LAWS OF 1935 AND IN ACCORDANCE WITH THE ORDER OF THE COUNTY AUDITOR OF ANOKA COUNTY MINNESOTA I HAVE PLATTED THE FOLLOWING DESCRIBED LAND IN THE COUNTY OF ANOKA AND THE STATE OF MINNESOTA TO WIT: THE NE 1/4 OF NW 1/4 AND THE S 1/2 OF THE NW 1/4 OF SECTION 13 TOWNSHIP 30 RANGE 24 EXCEPT THE LAND PLATTED AS BROOKVIEW ADDITION AND RECORDED IN BOOK 1 OF REGISTERED LANDS, THAT THE PLAT ON THIS SHEET IS A CORRECT DELINEATION OF SAID PLATTING AND TO BE KNOWN AS AUDITORS SUBDIVISION NUMBER 21 AND THAT ALL DISTANCES ARE SHOWN IN FEET AND DECIMALS OF A FOOT.

DATED May 23rd 1939

Wayne L. Ridge
COUNTY SURVEYOR,
ANOKA COUNTY MINNESOTA.

ABOVE CERTIFICATE SUBSCRIBED AND SWORN TO BEFORE ME THIS 23rd DAY OF May 1939.

Alva A. Nelson
Clerk of District Court
Anoka County, Minnesota

I, E.A. CARLSON, COUNTY AUDITOR OF ANOKA COUNTY MINNESOTA, HEREBY CERTIFY THAT I HAVE NOTIFIED THE OWNERS OF THE LAND DESCRIBED IN THE FOREGOING COUNTY SURVEYORS CERTIFICATE TO PLAT THE SAME AND A REASONABLE TIME HAVING ELAPSED SINCE THE SERVICE OF SAID NOTICE AND REQUEST, I HAVE CAUSED SAME TO BE PLATTED IN ACCORDANCE WITH SECTION 2219 CHAPTER 11 GENERAL STATUTES OF 1923 AND AS AMENDED BY CHAPTER 21 LAWS OF 1935, AND IN ACCORDANCE WITH THE PLAT ON THIS SHEET, AND SAME TO BE KNOWN AS AUDITORS SUBDIVISION NUMBER 21.

DATED May 23rd 1939

E.A. Carlson
COUNTY AUDITOR
ANOKA COUNTY MINNESOTA

ABOVE CERTIFICATE SUBSCRIBED AND SWORN TO BEFORE ME THIS 23rd DAY OF May 1939.

Alva A. Nelson
Clerk of District Court
Anoka County, Minnesota

NOTE: THIS PLAT NOT TO BE USED AFTER MARCH 17, 1949.

SEE REVISED PLAT No. 21 PAGE 14-A