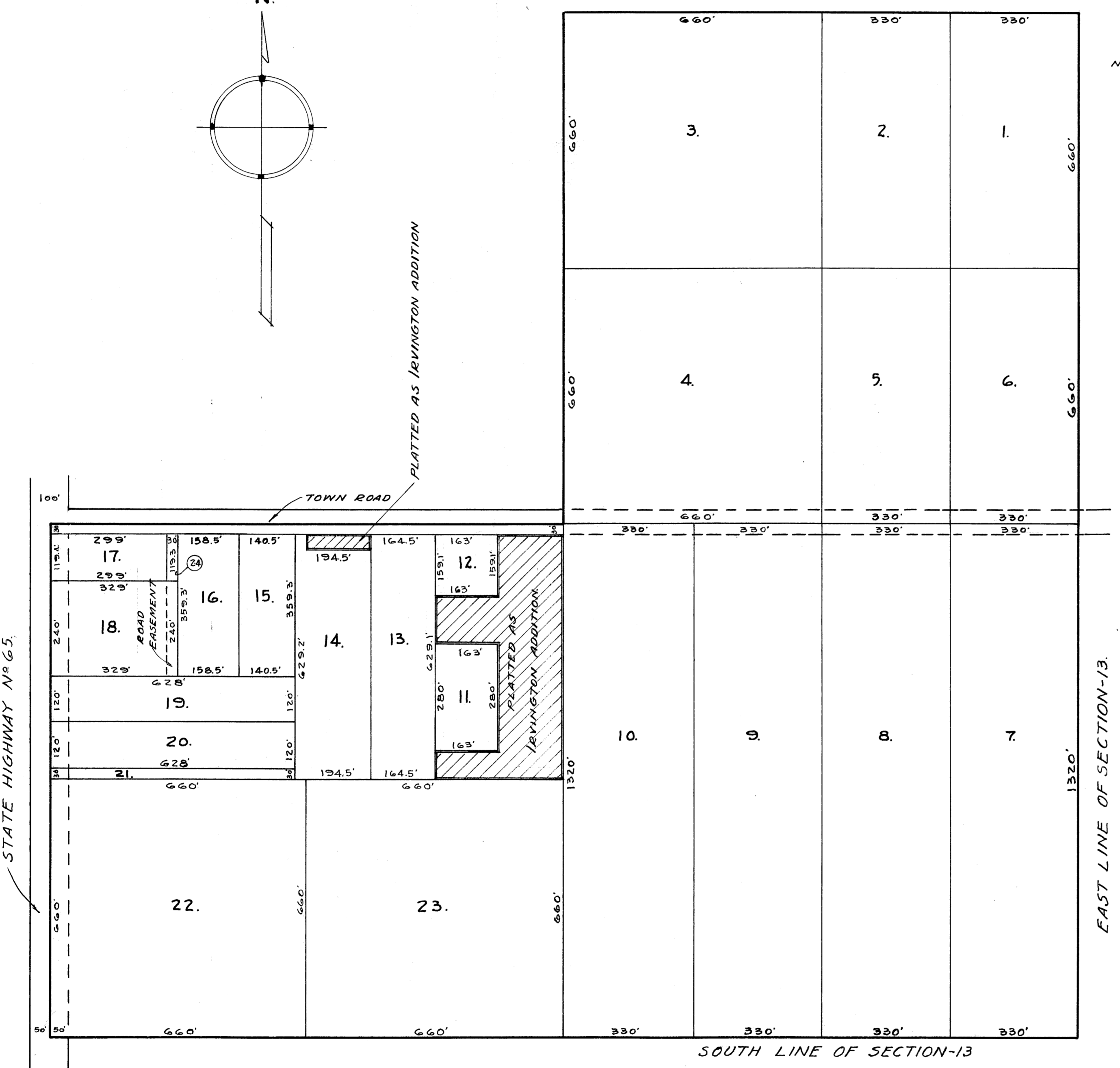
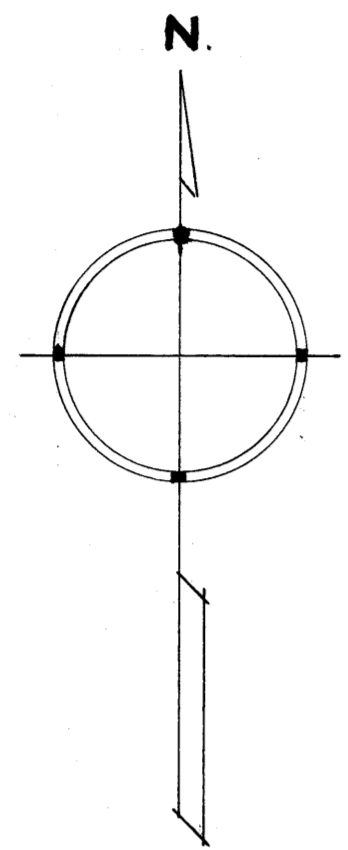


OFFICE OF REGISTER OF DEEDS,
STATE OF MINNESOTA, COUNTY OF ANOKA }
I hereby certify that the within instrument was filed in this office for record on the 1 day of June, A.D. 1939, at 8 o'clock A.M. and was duly recorded in book 7 page 15.
C. W. B. Deuel
Register of Deeds.

AUDITOR'S SUBDIVISION NUMBER 22

SCALE 1"=200'



I, HEREBY CERTIFY THAT IN ACCORDANCE WITH SECTION 2219 CHAPTER 11 GENERAL STATUTES OF 1923 AND AS AMENDED BY CHAPTER 21 LAWS OF 1935, AND IN ACCORDANCE WITH THE ORDER OF THE COUNTY AUDITOR OF ANOKA COUNTY, MINNESOTA I HAVE PLATTED THE FOLLOWING DESCRIBED LAND IN THE COUNTY OF ANOKA AND THE STATE OF MINNESOTA TO WIT; THE NE 1/4 OF SE 1/4 AND THE SW 1/4 OF THE SE 1/4 OF SECTION 13 TOWNSHIP 30 RANGE 24 EXCEPT THE LAND PLATTED AS IRVINGTON ADDITION AND NOT HERETOFORE VACATED, THAT THE PLAT ON THIS SHEET IS A CORRECT DELINEATION OF SAID PLATTING AND TO BE KNOWN AS AUDITORS SUBDIVISION NUMBER 22 AND THAT ALL DISTANCES ARE SHOWN IN FEET AND DECIMALS OF A FOOT.

DATED: May 31st 1939

Wayne L. Page
COUNTY SURVEYOR,
ANOKA COUNTY MINNESOTA.

ABOVE CERTIFICATE SUBSCRIBED AND SWORN TO BEFORE ME THIS 31st DAY OF May 1939.

Theo. A. Nelson
Clerk of District Court,
Anoka County, Minnesota.

I, E.A. CARLSON, COUNTY AUDITOR OF ANOKA COUNTY MINNESOTA, HEREBY CERTIFY THAT I HAVE NOTIFIED THE OWNERS OF THE LAND DESCRIBED IN THE FOREGOING COUNTY SURVEYORS CERTIFICATE TO PLAT THE SAME AND A REASONABLE TIME HAVING ELAPSED SINCE THE SERVICE OF SAID NOTICE AND REQUEST, I HAVE CAUSED SAME TO BE PLATTED IN ACCORDANCE WITH SECTION 2219 CHAPTER 11 GENERAL STATUTES OF 1923 AND AS AMENDED BY CHAPTER 21 LAWS OF 1935, AND IN ACCORDANCE WITH THE PLAT ON THIS SHEET, AND SAME TO BE KNOWN AS AUDITORS SUBDIVISION NUMBER 22.

DATED May 31st 1939

E.A. Carlson
COUNTY AUDITOR,
ANOKA COUNTY MINNESOTA.

ABOVE CERTIFICATE SUBSCRIBED AND SWORN TO BEFORE ME THIS 31st DAY OF May 1939.

Theo. A. Nelson
Clerk of District Court,
Anoka County, Minnesota.