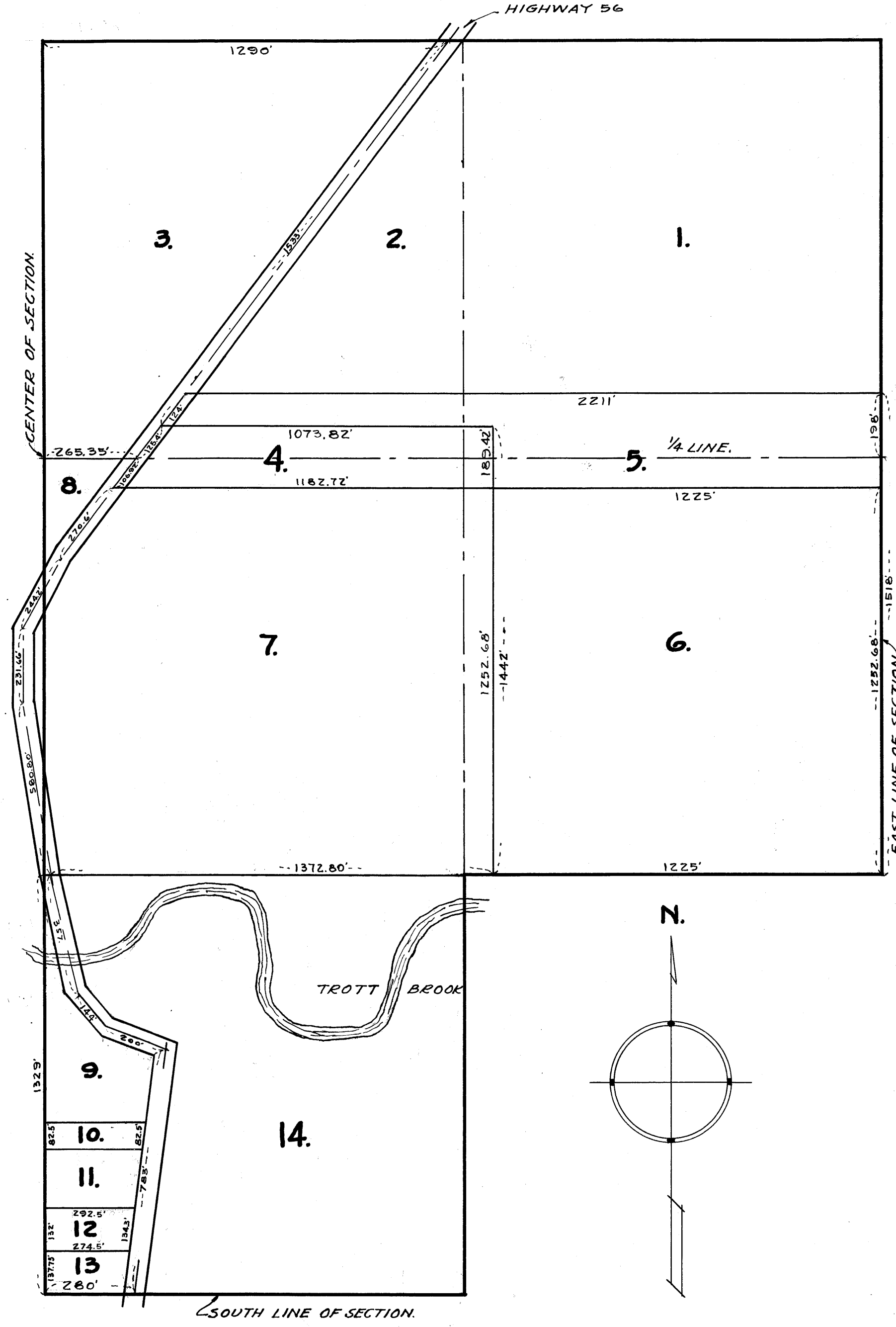


OFFICE OF REGISTER OF DEEDS,
 STATE OF MINNESOTA, COUNTY OF ANOKA }
 I hereby certify that the within instrument was filed in this office for record on this day of Aug. A.D. 1939 at 10 o'clock A.M. and was duly recorded in book 727, P. 10, page 2. P.
 C. W. Randall
 Register of Deeds

AUDITOR'S SUBDIVISION NUMBER 27

SCALE 1"=300'



I, HEREBY CERTIFY THAT IN ACCORDANCE WITH SECTION 2219 CHAPTER 11 GENERAL STATUTES OF 1923 AND AS AMENDED BY CHAPTER 21 LAWS OF 1935, AND IN ACCORDANCE WITH THE ORDER OF THE COUNTY AUDITOR OF ANOKA COUNTY MINNESOTA I HAVE PLATTED THE FOLLOWING DESCRIBED LAND IN THE COUNTY OF ANOKA AND THE STATE OF MINNESOTA TO WIT: THE S 1/2 OF THE NE 1/4 AND THE N 1/2 OF THE SE 1/4 AND THE SW 1/4 OF SE 1/4 AND THAT PART OF THE NE 1/4 OF THE SW 1/4 WHICH IS EAST OF HIGHWAY 56, ALL OF SAID LANDS BEING IN SECTION 2 TOWNSHIP 32 RANGE 25, THAT THE PLAT ON THIS SHEET IS A CORRECT DELINEATION OF SAID PLATTING AND TO BE KNOWN AS AUDITORS SUBDIVISION NUMBER 27 AND THAT ALL DISTANCES ARE SHOWN IN FEET AND DECIMALS OF A FOOT.

DATED Aug. 3rd 1939

Wayne L. Ridge
 COUNTY SURVEYOR
 ANOKA COUNTY MINNESOTA.

ABOVE CERTIFICATE SUBSCRIBED AND SWORN TO BEFORE ME THIS 3rd DAY OF August 1939

Thos. A. Nelson
 CLERK OF DIST. COURT
 ANOKA COUNTY MINNESOTA.

I, E. A. CARLSON, COUNTY AUDITOR OF ANOKA COUNTY MINNESOTA, HEREBY CERTIFY THAT I HAVE NOTIFIED THE OWNERS OF THE LAND DESCRIBED IN THE FOREGOING COUNTY SURVEYORS CERTIFICATE TO PLAT THE SAME AND A REASONABLE TIME HAVING ELAPSED SINCE THE SERVICE OF SAID NOTICE AND REQUEST I HAVE CAUSED SAME TO BE PLATTED IN ACCORDANCE WITH SECTION 2219 CHAPTER 11 GENERAL STATUTES OF 1923 AND AS AMENDED BY CHAPTER 21 LAWS OF 1935, AND IN ACCORDANCE WITH THE PLAT ON THIS SHEET, AND SAME TO BE KNOWN AS AUDITORS SUBDIVISION NUMBER 27.

DATED Aug 3-1939

E. A. Carlson
 COUNTY AUDITOR
 ANOKA COUNTY MINNESOTA.

ABOVE CERTIFICATE SUBSCRIBED AND SWORN TO BEFORE ME THIS 3rd DAY OF August 1939.

Thos. A. Nelson
 CLERK OF DIST COURT
 ANOKA COUNTY MINNESOTA.