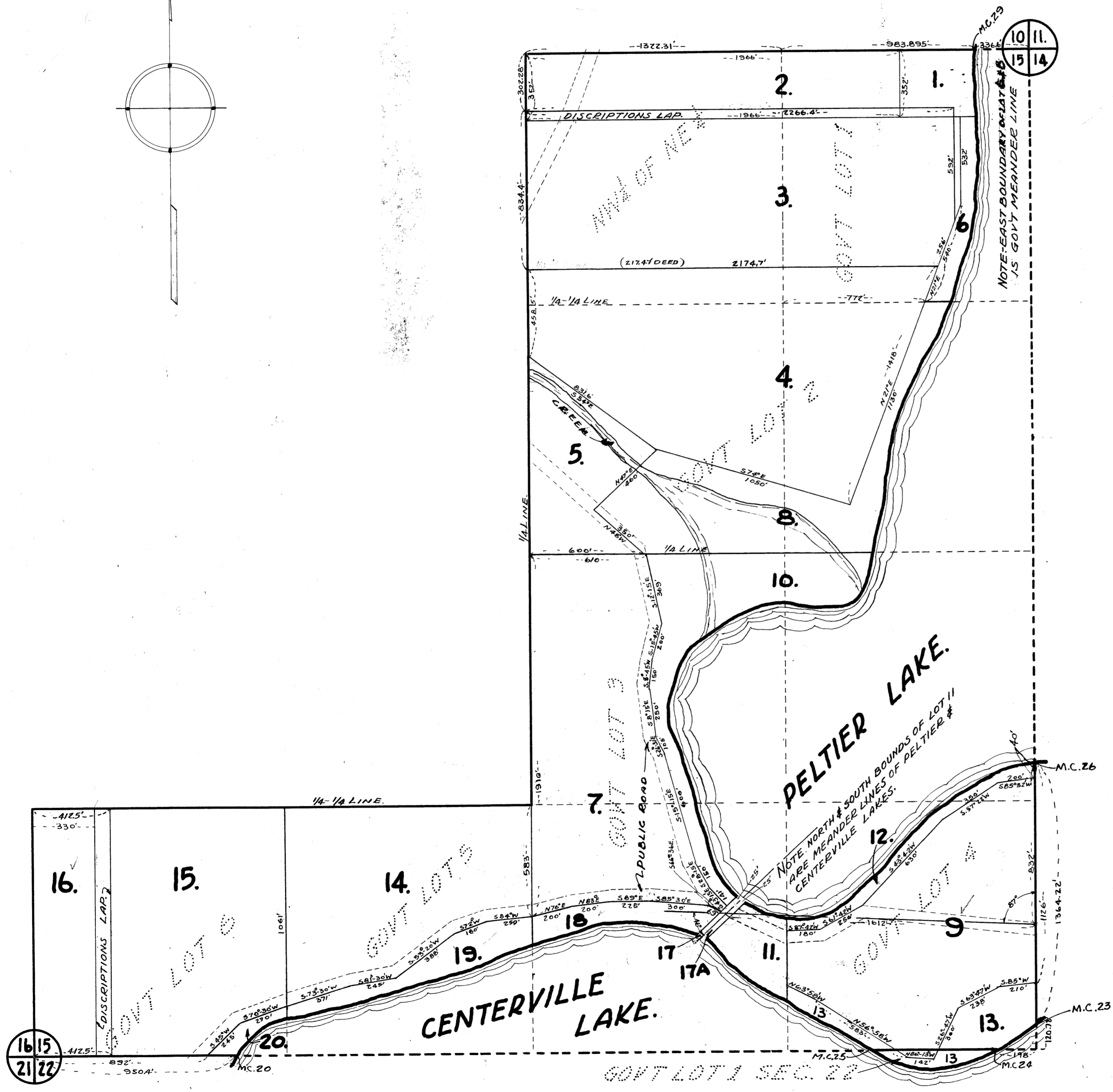
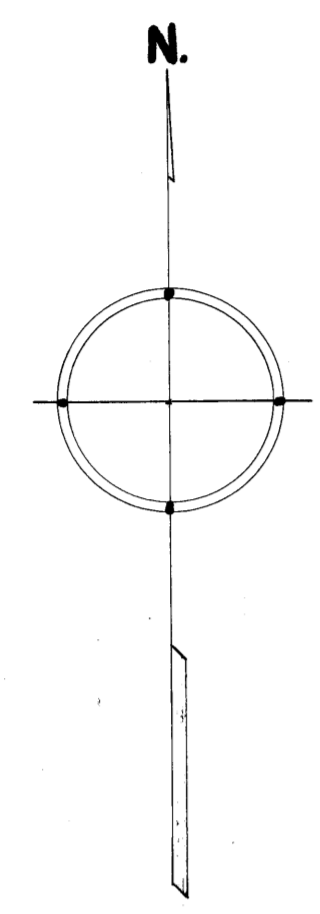


OFFICE OF REGISTER OF DEEDS,
 STATE OF MINNESOTA, COUNTY OF ANOKA
 I hereby certify that the within instrument was filed in this office for record on the 23rd day of September, A. D. 1940, at _____ o'clock P. M., and was duly recorded in book _____ of _____ page _____.

Eva Brandell
 Register of Deeds

AUDITOR'S SUBDIVISION NUMBER 46

REVISED
 SCALE 1" = 400'



I HEREBY CERTIFY THAT IN ACCORDANCE WITH SECTION 2219 CHAPTER 11 GENERAL STATUTES OF 1923 AND AS AMENDED BY CHAPTER 21 LAWS OF 1938, AND IN ACCORDANCE WITH THE ORDER OF THE COUNTY AUDITOR OF ANOKA COUNTY MINNESOTA, I HAVE PLATTED THE FOLLOWING DESCRIBED LAND IN THE COUNTY OF ANOKA AND STATE OF MINNESOTA TO WIT, GOVERNMENT LOTS 1 TO 6 INCLUSIVE AND THE NW 1/4 OF THE NE 1/4 ALL OF WHICH ARE IN SECTION 15, ALSO GOVERNMENT LOT 1 SECTION 22, ALL ABOVE MENTIONED LANDS BEING IN TOWNSHIP 31 NORTH RANGE 22 WEST, THAT THE PLAT ON THIS SHEET IS A CORRECT DELINEATION OF SAID PLATTING AND TO BE KNOWN AS AUDITOR'S SUBDIVISION NUMBER 46, AND THAT DISTANCES ARE SHOWN IN FEET AND DECIMALS OF A FOOT.

DATED Sept 23rd 1940

Wayne L. Rife
 COUNTY SURVEYOR
 ANOKA COUNTY MINNESOTA.

ABOVE CERTIFICATE SUBSCRIBED AND SWORN TO BEFORE ME THIS 23rd DAY OF September 1940.

Sho. Carlson
 COUNTY CLERK
 ANOKA COUNTY MINNESOTA.

I, E. A. CARLSON COUNTY AUDITOR OF ANOKA COUNTY MINNESOTA, HEREBY CERTIFY THAT I HAVE NOTIFIED THE OWNERS OF THE LAND DESCRIBED IN THE FOREGOING COUNTY SURVEYOR'S CERTIFICATE TO PLAT THE SAME AND A REASONABLE TIME HAVING ELAPSED SINCE THE SERVICE OF SAID NOTICE AND REQUEST, I HAVE CAUSED SAME TO BE PLATTED IN ACCORDANCE WITH SECTION 2219 CHAPTER 11 GENERAL STATUTES OF 1923 AND AS AMENDED BY CHAPTER 21 LAWS OF 1938, AND IN ACCORDANCE WITH THE PLAT ON THIS SHEET AND SAME TO BE KNOWN AS AUDITOR'S SUBDIVISION NUMBER 46.

DATED Sept 23-1940

E. A. Carlson
 COUNTY AUDITOR
 ANOKA COUNTY MINNESOTA.

ABOVE CERTIFICATE SUBSCRIBED AND SWORN TO BEFORE ME THIS 23rd DAY OF September 1940.

Sho. Carlson
 COUNTY CLERK
 ANOKA COUNTY MINNESOTA.

NOTE.
 BOUNDARIES OF ALL LOTS ABUTTING LAKES ARE LOW WATER LINE UNLESS OTHERWISE NOTED.