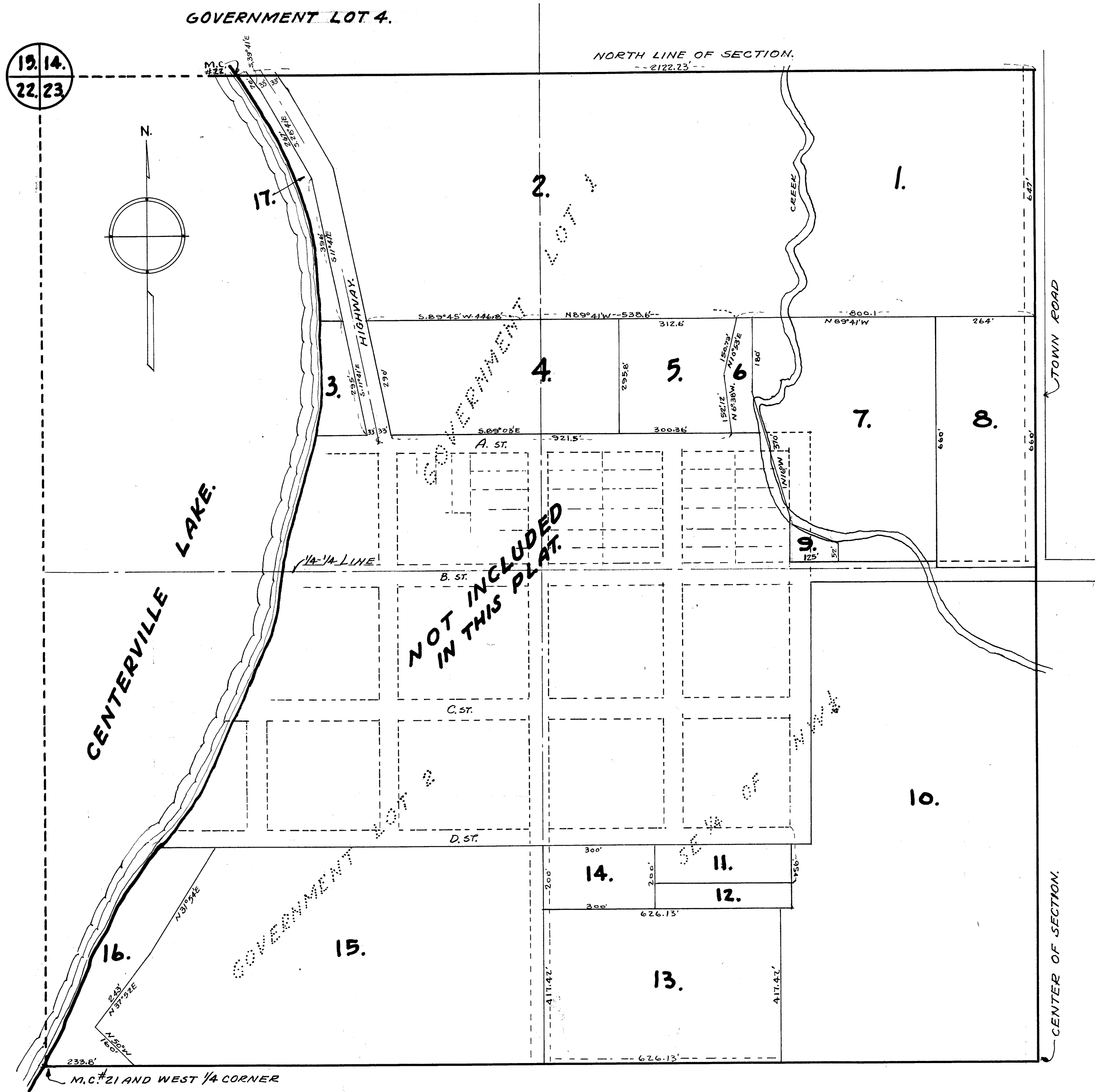


OFFICE OF REGISTER OF DEEDS,  
STATE OF MINNESOTA, COUNTY OF ANOKA  
I hereby certify that the within instrument was filed in this office for record on the 22 day of Sept. A. D. 1940. at St. Cloud, Minn. and was duly recorded in book *Def. Matter*, page *427*.  
*Eva Brandell*  
Register of Deeds

# AUDITOR'S SUBDIVISION NUMBER 48.

REVISED  
SCALE 1" = 200'



I HEREBY CERTIFY THAT IN ACCORDANCE WITH SECTION 2219 CHAPTER 11 GENERAL STATUTES OF 1923 AND AS AMENDED BY CHAPTER 21 LAWS OF 1935, AND IN ACCORDANCE WITH THE ORDER OF THE COUNTY AUDITOR OF ANOKA COUNTY MINNESOTA, I HAVE PLATTED THE FOLLOWING DESCRIBED LAND IN THE COUNTY OF ANOKA AND THE STATE OF MINNESOTA TO WIT: GOVERNMENT LOTS 1 AND 2 AND THE SE 1/4 OF THE NW 1/4, EXCEPT THE LAND PREVIOUSLY PLATTED AS 'CENTERVILLE' AND RECORDED IN BOOK 'A' OF PLATS PAGE 15, ALL OF SAID LAND BEING IN SECTION 23 TOWNSHIP 31 NORTH RANGE 22 WEST; THAT THE PLAT ON THIS SHEET IS A CORRECT DELINEATION OF SAID PLATTING AND TO BE KNOWN AS AUDITORS SUBDIVISION NUMBER 48 AND THAT DISTANCES ARE SHOWN IN FEET AND DECIMALS OF A FOOT.

DATED Sept. 19th 1940

*Wayne L. Ridge*  
COUNTY SURVEYOR  
ANOKA COUNTY MINNESOTA.

ABOVE CERTIFICATE SUBSCRIBED AND SWORN TO BEFORE ME THIS 19th DAY OF September, 1940.

*Thomas Nelson*  
CLERK OF DIST. COURT  
ANOKA COUNTY MINNESOTA.

I, E.A. CARLSON, COUNTY AUDITOR OF ANOKA COUNTY MINNESOTA, HEREBY CERTIFY THAT I HAVE NOTIFIED THE OWNERS OF THE LAND DESCRIBED IN THE FOREGOING COUNTY SURVEYORS CERTIFICATE TO PLAT THE SAME, AND A REASONABLE TIME HAVING ELAPSED SINCE THE SERVICE OF SAID NOTICE AND REQUEST I HAVE CAUSED SAME TO BE PLATTED IN ACCORDANCE WITH SECTION 2219 CHAPTER 11 GENERAL STATUTES OF 1923 AND AS AMENDED BY CHAPTER 21 LAWS OF 1935, AND IN ACCORDANCE WITH THE PLAT ON THIS SHEET AND SAME TO BE KNOWN AS AUDITORS SUBDIVISION NUMBER 48.

DATED Sept 19-1940

*E.A. Carlson*  
COUNTY AUDITOR  
ANOKA COUNTY MINNESOTA.

ABOVE CERTIFICATE SUBSCRIBED AND SWORN TO BEFORE ME THIS 19th DAY OF September 1940.

*Thomas Nelson*  
CLERK OF DIST. COURT  
ANOKA COUNTY MINNESOTA.

NOTE.  
WESTERLY BOUNDARY LINE OF LOTS 3, 16 AND 17 BY DEEDS ARE LOW WATER MARK OF CENTERVILLE LAKE.