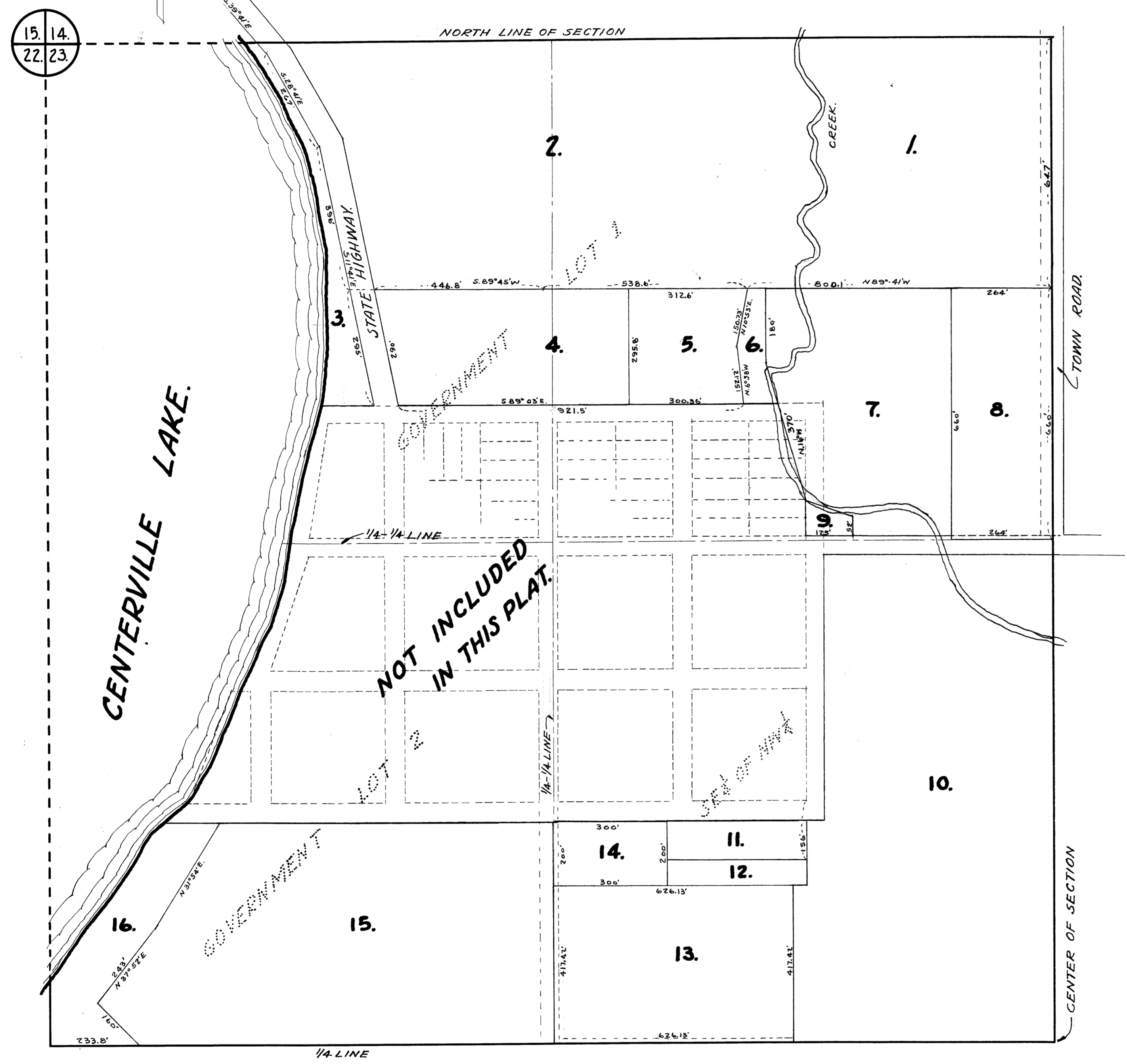
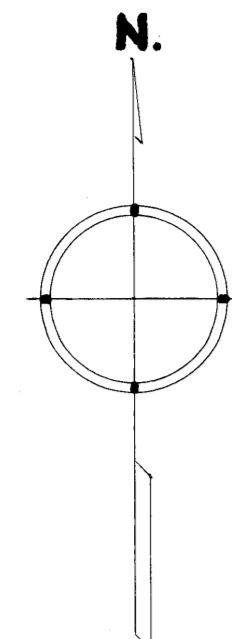


OFFICE OF REGISTER OF DEEDS,
 STATE OF MINNESOTA, COUNTY OF ANOKA 1^{SS}.
 I hereby certify that the within instru-
 ment was filed in this office for record on
 the 29 day of April A. D. 1940.
 at 2 o'clock P. M., and was duly recorded
 in book 2 of Plats page 42.
 Eva Beardslee
 Register of Deeds

AUDITOR'S SUBDIVISION NUMBER 48

SCALE 1" = 200'



I HEREBY CERTIFY THAT IN ACCORDANCE WITH SECTION 2219 CHAPTER 11 GENERAL STATUTES OF 1923 AND AS AMENDED BY CHAPTER 21 LAWS OF 1935 AND IN ACCORDANCE WITH THE ORDER OF THE COUNTY AUDITOR OF ANOKA COUNTY MINNESOTA I HAVE PLATTED THE FOLLOWING DESCRIBED LAND IN THE COUNTY OF ANOKA AND THE STATE OF MINNESOTA TO WIT: GOVERNMENT LOTS 1 AND 2, AND THE SE 1/4 OF THE NW 1/4, EXCEPT THE LAND PREVIOUSLY PLATTED AS 'CENTERVILLE' AND RECORDED IN BOOK 'A' OF PLATS PAGE 15, ALL OF SAID LAND BEING IN SECTION 23 TOWNSHIP 31 RANGE 22, THAT THE PLAT ON THIS SHEET IS A CORRECT DELINEATION OF SAID PLATTING AND TO BE KNOWN AS AUDITOR'S SUBDIVISION NUMBER 48 AND THAT DISTANCES ARE SHOWN IN FEET AND DECIMALS OF A FOOT.

DATED Apr. 29 1940

Wayne L. Ridge
 COUNTY SURVEYOR
 ANOKA COUNTY MINNESOTA.

ABOVE CERTIFICATE SUBSCRIBED AND SWORN TO BEFORE ME THIS 29th DAY OF April 1940.

Thos Carlson
 CLERK OF DIST. COURT
 ANOKA COUNTY, MINNESOTA

I, E. A. CARLSON, COUNTY AUDITOR OF ANOKA COUNTY MINNESOTA, HEREBY CERTIFY THAT I HAVE NOTIFIED THE OWNERS OF THE LAND DESCRIBED IN THE FOREGOING COUNTY SURVEYORS CERTIFICATE TO PLAT THE SAME AND A REASONABLE TIME HAVING ELAPSED SINCE THE SERVICE OF SAID NOTICE AND REQUEST I HAVE CAUSED SAME TO BE PLATTED IN ACCORDANCE WITH SECTION 2219 CHAPTER 11 GENERAL STATUTES OF 1923 AND AS AMENDED BY CHAPTER 21 LAWS OF 1935, AND IN ACCORDANCE WITH THE PLAT ON THIS SHEET, AND SAME TO BE KNOWN AS AUDITOR'S SUBDIVISION NUMBER 48.

DATED Apr. 29, 1940

E. A. Carlson
 COUNTY AUDITOR
 ANOKA COUNTY MINNESOTA.

ABOVE CERTIFICATE SUBSCRIBED AND SWORN TO BEFORE ME THIS 29th DAY OF April 1940.

Thos Carlson
 CLERK OF DIST. COURT
 ANOKA COUNTY, MINNESOTA

NOTE --- THIS PLAT NOT TO BE USED AFTER 9-19-40 SEE REVISED PLAT NO 48 PAGE 42A.