

# AUDITOR'S SUBDIVISION NUMBER 49

SCALE 1"=300'

OFFICE OF REGISTER OF DEEDS,  
STATE OF MINNESOTA, COUNTY OF ANOKA

I hereby certify that the within instrument was filed in this office for record on the 26 day of March, A.D. 1940 at 4:00 P.M., and was duly recorded in book page 49

*Caro Brandell*  
Register of Deeds

I HEREBY CERTIFY THAT IN ACCORDANCE WITH SECTION 2219 CHAPTER 11 GENERAL STATUTES OF 1923 AND AS AMENDED BY CHAPTER 21 LAWS OF 1935, AND IN ACCORDANCE WITH THE ORDER OF THE COUNTY AUDITOR OF ANOKA COUNTY MINNESOTA I HAVE PLATTED THE FOLLOWING DESCRIBED LAND IN THE COUNTY OF ANOKA AND THE STATE OF MINNESOTA TO WIT; THE SW 1/4 AND THE SW 1/4 OF THE NW 1/4, AND THE NW 1/4 OF THE SE 1/4, AND THE SE 1/4 OF SE 1/4 ALL IN SECTION 2 TOWNSHIP 31 NORTH, RANGE 22 WEST. THAT THE PLAT ON THIS SHEET IS A CORRECT DELINEATION OF SAID PLATTING AND TO BE KNOWN AS AUDITORS SUBDIVISION NUMBER 49 AND THAT ALL DISTANCES ARE SHOWN IN FEET AND DECIMALS OF A FOOT.

DATED March 26<sup>th</sup> 1940

*Wayne J. Ridge*  
COUNTY SURVEYOR  
ANOKA COUNTY MINNESOTA

ABOVE CERTIFICATE SUBSCRIBED AND SWORN TO BEFORE ME THIS 26<sup>th</sup> DAY OF March AD 1940

*John Carlson*

I, E.A. CARLSON, COUNTY AUDITOR OF ANOKA COUNTY MINNESOTA, HEREBY CERTIFY THAT I HAVE NOTIFIED THE OWNERS OF THE LAND DESCRIBED IN THE FOREGOING COUNTY SURVEYORS CERTIFICATE TO PLAT THE SAME AND A REASONABLE TIME HAVING ELAPSED SINCE THE SERVICE OF SAID NOTICE AND REQUEST I HAVE CAUSED SAME TO BE PLATTED IN ACCORDANCE WITH SECTION 2219 CHAPTER 11 GENERAL STATUTES OF 1923 AND AS AMENDED BY CHAPTER 21 LAWS OF 1935 AND IN ACCORDANCE WITH THE PLAT ON THIS SHEET, AND SAME TO BE KNOWN AS AUDITORS SUBDIVISION NUMBER 49.

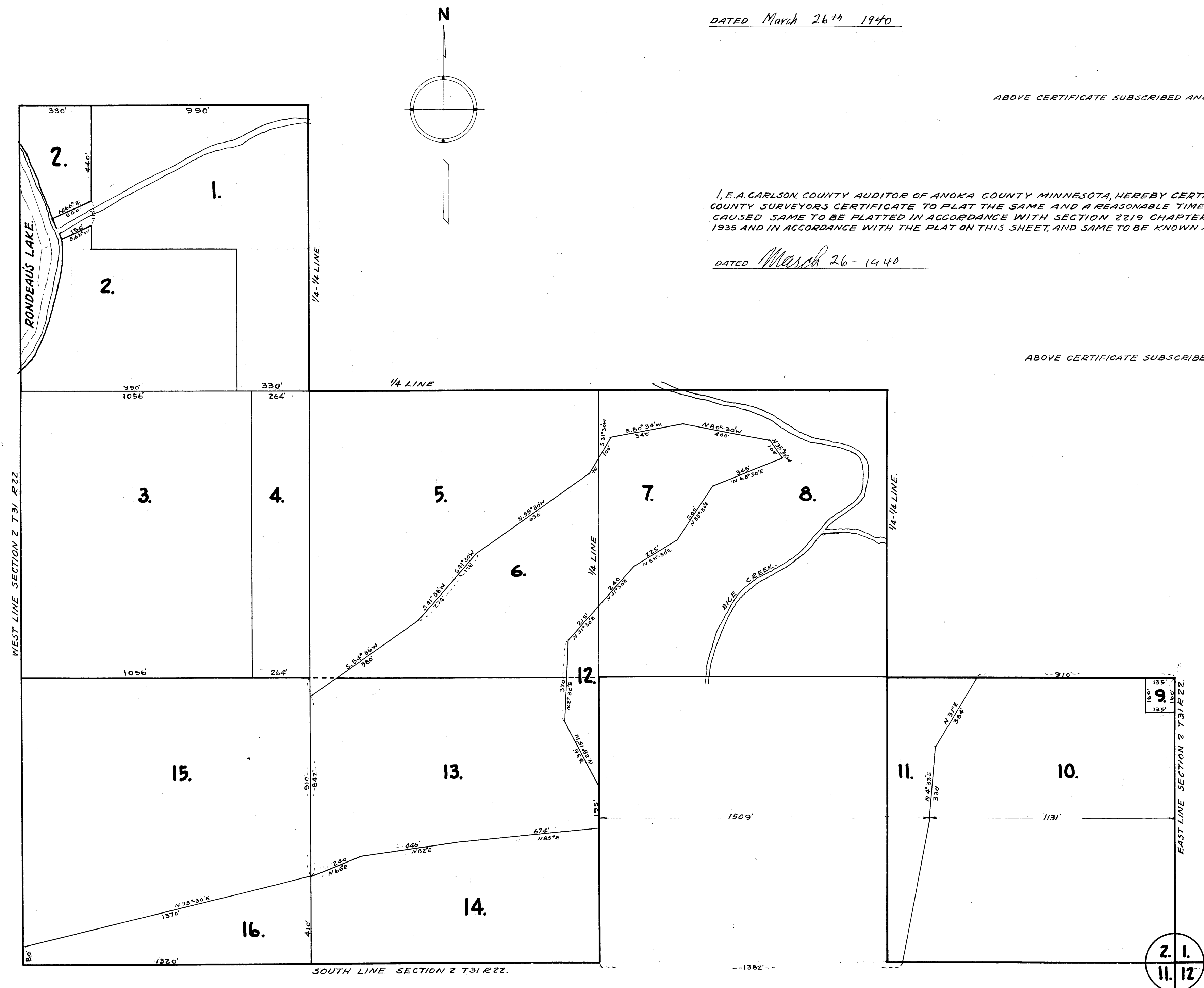
DATED March 26 - 1940

*E.A. Carlson*  
COUNTY AUDITOR  
ANOKA COUNTY MINNESOTA

ABOVE CERTIFICATE SUBSCRIBED AND SWORN TO BEFORE ME THIS 26<sup>th</sup> DAY OF March AD 1940

*John Carlson*

CLERK OF DIST. COURT  
ANOKA COUNTY, MINNESOTA



NOTE--- THIS PLAT NOT TO BE USED AFTER 9-19-40 SEE REVISED PLAT N° 49 PAGE 43A.