

AUDITOR'S SUBDIVISION No 57 2ND REVISION ANOKA COUNTY, MINNESOTA

I hereby certify that pursuant to Minnesota Statutes of 1945, Section 27219, as amended by Chapter 494 Laws of 1947, and in accordance with the order of the County Auditor of Anoka County, Minnesota, I have platted the following described land in the County of Anoka and State of Minnesota, to-wit: The Southeast 1/4 and the South 1/2 of the Northeast 1/4 of Section 26, Township 31 North, Range 24 West, except the land previously platted as DUNN VALLEY and recorded in book E of plats page 21, that the plat on this sheet is a correct delineation of said platting and shall be known as AUDITOR'S SUBDIVISION No 57 2ND REVISION, and that all distances are shown in feet and decimals of a foot.

March 19, 1948
Dated

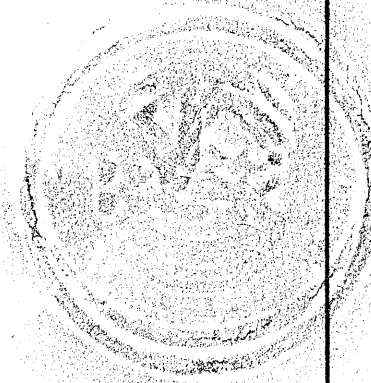
Harvey A. Cartwright
Harvey A. Cartwright
County Surveyor, Anoka County, Minnesota

I, E. A. Carlson, County Auditor of Anoka County, Minnesota, hereby certify that pursuant to Minnesota Statutes of 1945, Section 27219, as amended by Chapter 494 Laws of 1947, have caused the foregoing plat, as described in the County Surveyor's Certificate, to be prepared and the same to be known as AUDITOR'S SUBDIVISION No 57 2ND REVISION

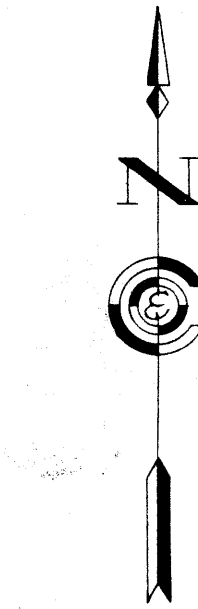
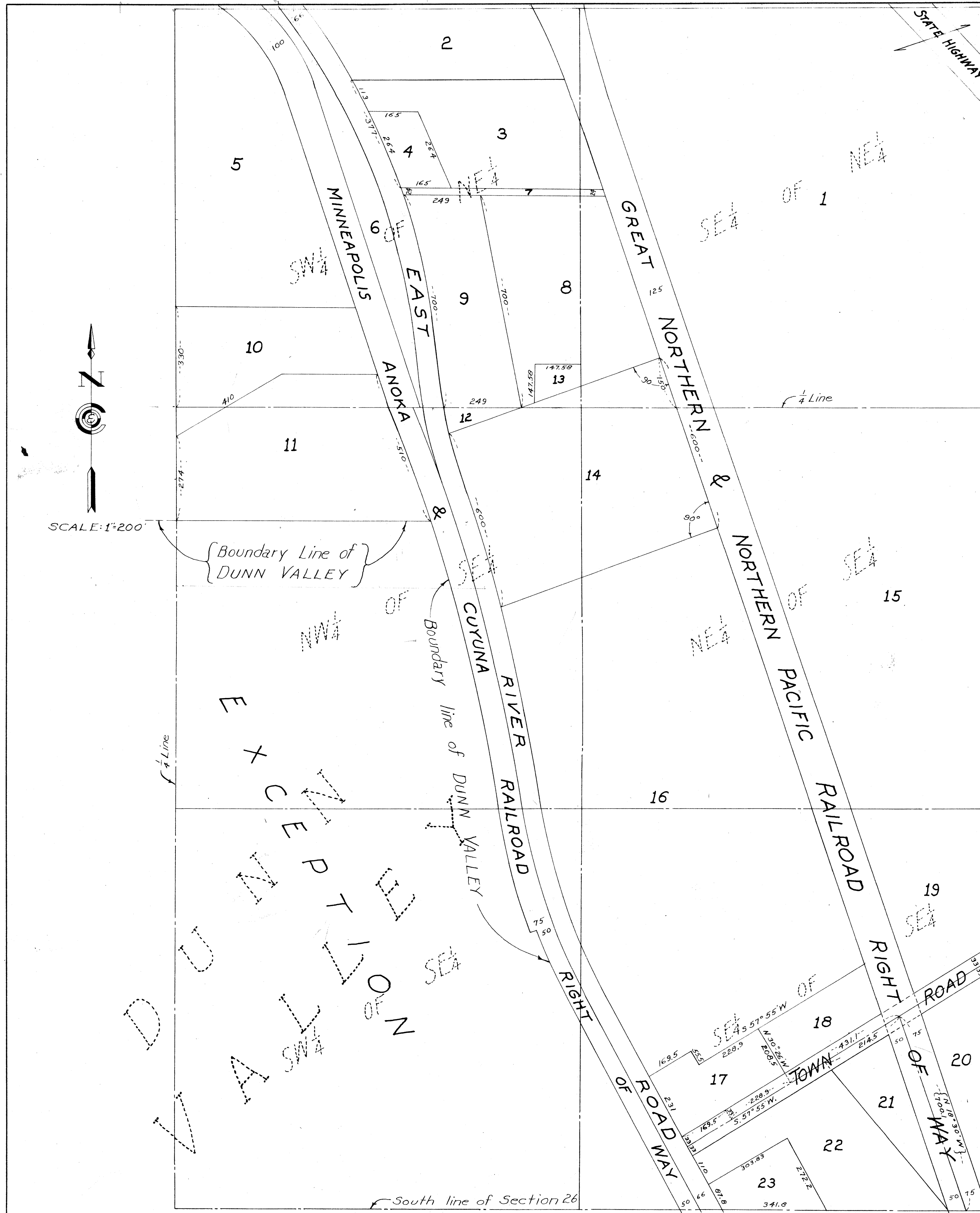
March 18-1948
Dated

E. A. Carlson
E. A. Carlson
County Auditor, Anoka County, Minnesota

OFFICE OF REGISTER OF DEEDS,
STATE OF MINNESOTA, COUNTY OF ANOKA
I hereby certify that the within instrument was filed in this office for record on the day of MAR 20 1948 A. D. 1948 at 11 o'clock A.M. and was duly recorded in book 7 of Plat Page 51-B
Wm. Brown
Register of Deeds



CARTWRIGHT & OLSON
LAND SURVEYORS



SCALE: 1"=200'

Boundary Line of
DUNN VALLEY

DUNN VALLEY
SECTION

East line of Section 26

S.E. Corner of
Sec. 26, Twp. 31, Rge. 24