

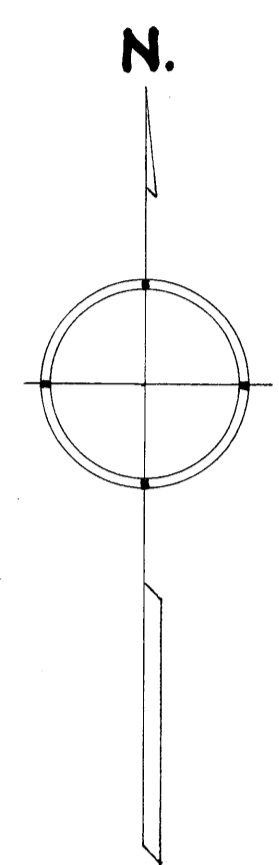
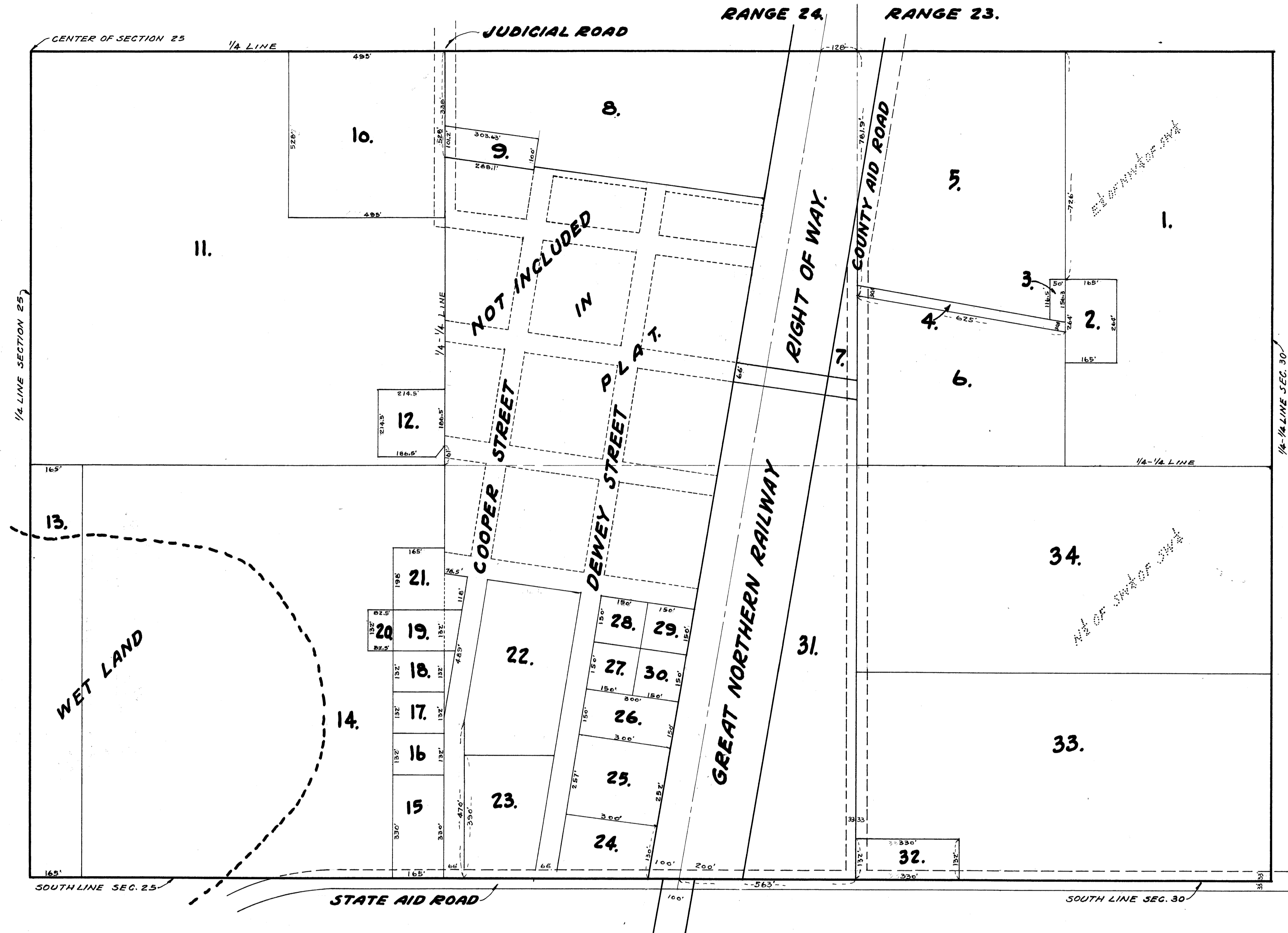
AUDITORS SUBDIVISION NUMBER 60.

SCALE 1" = 200'

OFFICE OF REGISTER OF DEEDS,
STATE OF MINNESOTA, COUNTY OF ANOKA

I hereby certify that the within instrument was filed in this office for record on the 29th day of September, D. 1940 at 9 o'clock A.M., and was duly recorded in book 7, P. 54 page 54.

Eva Bundeel
Register of Deeds



I HEREBY CERTIFY THAT IN ACCORDANCE WITH SECTION 2219 CHAPTER 11 GENERAL STATUTES OF 1923 AND AS AMENDED BY CHAPTER 21 LAWS OF 1935, AND IN ACCORDANCE WITH THE ORDER OF THE COUNTY AUDITOR OF ANOKA COUNTY MINNESOTA I HAVE PLATTED THE FOLLOWING DESCRIBED LAND IN THE COUNTY OF ANOKA AND THE STATE OF MINNESOTA TO WIT: THE SE 1/4 OF SECTION 25 TOWNSHIP 34 NORTH, RANGE 24 WEST, EXCEPT THE LAND PREVIOUSLY PLATTED AS BETHEL AND RECORDED IN BOOK 8 OF PLATS PAGE 18, AND ALSO THE WEST 1/4 OF THE SW 1/4 OF SECTION 30 TOWNSHIP 34 NORTH, RANGE 23 WEST, THAT THE PLAT ON THIS SHEET IS A CORRECT DELINEATION OF SAID PLATTING AND TO BE KNOWN AS AUDITORS SUBDIVISION NUMBER 60, AND THAT DISTANCES ARE SHOWN IN FEET AND DECIMALS OF A FOOT.

DATED Sept. 19th 1940

Wayne L. Rife
COUNTY SURVEYOR
ANOKA COUNTY MINNESOTA.

ABOVE CERTIFICATE SUBSCRIBED AND SWORN TO BEFORE ME THIS 19th DAY OF September 1940.

Charles Nelson
CLERK OF DIST. COURT
ANOKA COUNTY, MINNESOTA.

I, E. A. CARLSON, COUNTY AUDITOR OF ANOKA COUNTY MINNESOTA, HEREBY CERTIFY THAT I HAVE NOTIFIED THE OWNERS OF THE LAND DESCRIBED IN THE FOREGOING COUNTY SURVEYORS CERTIFICATE TO PLAT THE SAME AND A REASONABLE TIME HAVING ELAPSED SINCE THE SERVICE OF SAID NOTICE AND REQUEST, I HAVE CAUSED SAME TO BE PLATTED IN ACCORDANCE WITH SECTION 2219 CHAPTER 11 GENERAL STATUTES OF 1923 AND AS AMENDED BY CHAPTER 21 LAWS OF 1935, AND IN ACCORDANCE WITH THE PLAT ON THIS SHEET, AND SAME TO BE KNOWN AS AUDITORS SUBDIVISION NUMBER 60.

DATED Sept 19-1940

E. A. Carlson
COUNTY AUDITOR
ANOKA COUNTY MINNESOTA

ABOVE CERTIFICATE SUBSCRIBED AND SWORN TO BEFORE ME THIS 19th DAY OF September 1940.

Charles Nelson
CLERK OF DIST. COURT
ANOKA COUNTY, MINNESOTA.