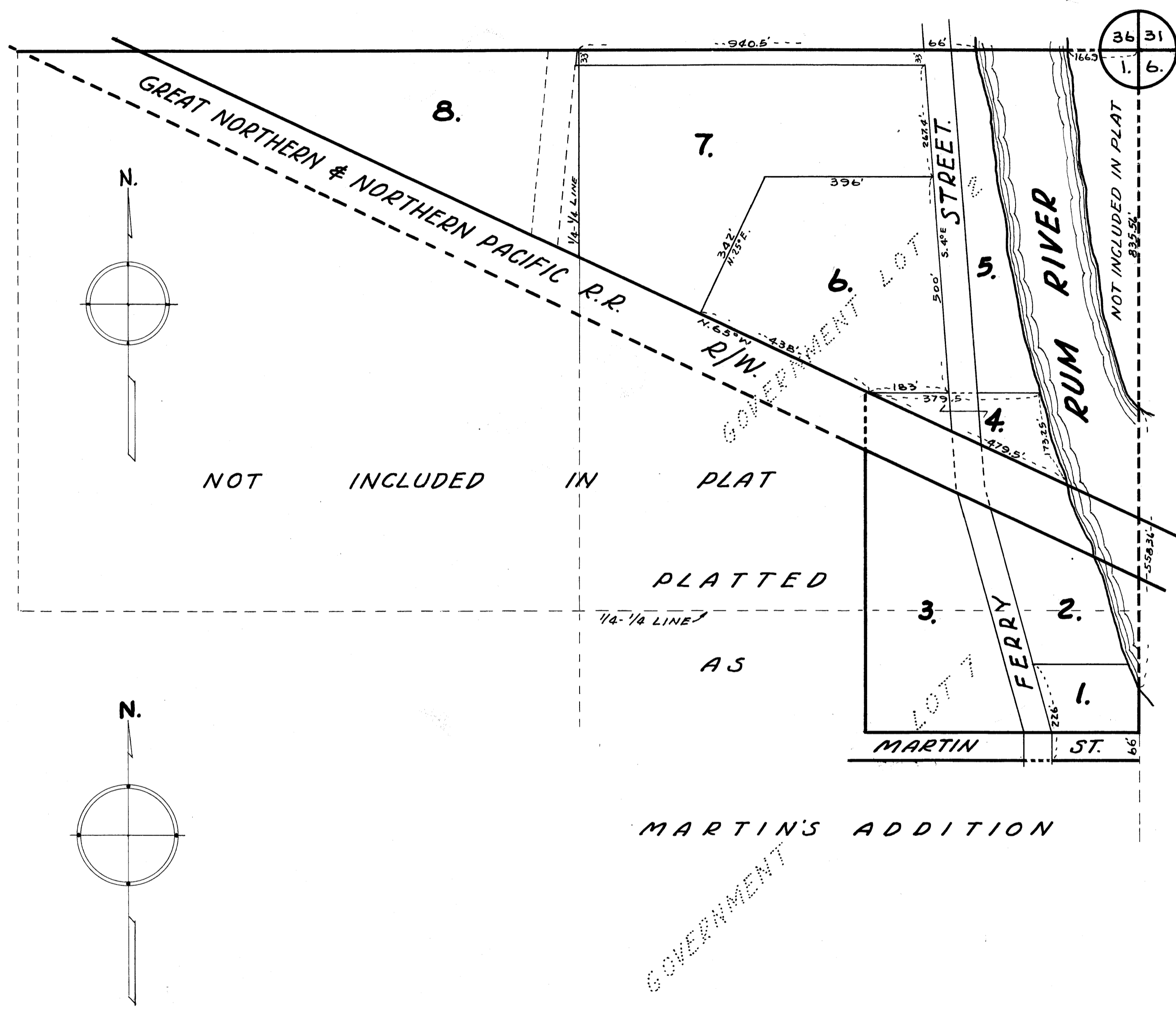


I hereby certify that the within instrument was filed in this office for record on the 7th day of November, 1940, at 9 o'clock A.M., and was duly recorded in book 87 page 1

Eva Brandell
Register of Deeds

AUDITORS SUBDIVISION NUMBER 64.

SCALE 1"=200'



I HEREBY CERTIFY THAT IN ACCORDANCE WITH SECTION 2219 CHAPTER 11 GENERAL STATUTES OF 1923 AND AS AMENDED BY CHAPTER 21 LAWS OF 1935, AND IN ACCORDANCE WITH THE ORDER OF THE COUNTY AUDITOR OF ANOKA COUNTY MINNESOTA, I HAVE PLATTED THE FOLLOWING DESCRIBED LAND IN THE COUNTY OF ANOKA AND THE STATE OF MINNESOTA TO WIT, THAT PART OF THE NW 1/4 OF THE N.E. 1/4 WHICH IS NORTH OF THE RAILROAD RIGHT OF WAY, AND ALSO THAT PART OF GOVERNMENT LOTS 2 & 7 WHICH IS NORTH OF THE LAND PLATTED AS MARTIN'S ADDITION, (RECORDED IN BOOK A OF PLATS PAGE 18) AND WEST OF THE RUM RIVER, ALL BEING IN SECTION 1 TOWNSHIP 31 NORTH RANGE 25 WEST; THAT THE PLAT ON THIS SHEET IS A CORRECT DELINEATION OF SAID PLATTING AND TO BE KNOWN AS AUDITORS SUBDIVISION NUMBER 64, AND THAT DISTANCES ARE SHOWN IN FEET AND DECIMALS OF A FOOT.

DATED Nov 7th 1940

Wayne L. Rapp
COUNTY SURVEYOR
ANOKA COUNTY MINNESOTA

ABOVE CERTIFICATE SUBSCRIBED AND SWORN TO BEFORE ME THIS 7th DAY OF November 1940

Thomas Nelson
CLERK OF DIST. COURT
ANOKA COUNTY, MINNESOTA

I, E. A. CARLSON, COUNTY AUDITOR OF ANOKA COUNTY MINNESOTA HEREBY CERTIFY THAT I HAVE NOTIFIED THE OWNERS OF THE LAND DESCRIBED IN THE FOREGOING COUNTY SURVEYORS CERTIFICATE TO PLAT THE SAME AND A REASONABLE TIME HAVING ELAPSED SINCE THE SERVICE OF SAID NOTICE AND REQUEST I HAVE CAUSED SAME TO BE PLATTED IN ACCORDANCE WITH SECTION 2219 CHAPTER 11 GENERAL STATUTES OF 1923 AND AS AMENDED BY CHAPTER 21 LAWS OF 1935 AND IN ACCORDANCE WITH THE PLAT ON THIS SHEET, AND SAME TO BE KNOWN AS AUDITORS SUBDIVISION NUMBER 64.

DATED Nov 7-1940

E. A. Carlson
COUNTY AUDITOR
ANOKA COUNTY MINNESOTA.

ABOVE CERTIFICATE SUBSCRIBED AND SWORN TO BEFORE ME THIS 7th DAY OF November 1940.

Thomas Nelson
CLERK OF DIST. COURT
ANOKA COUNTY, MINNESOTA