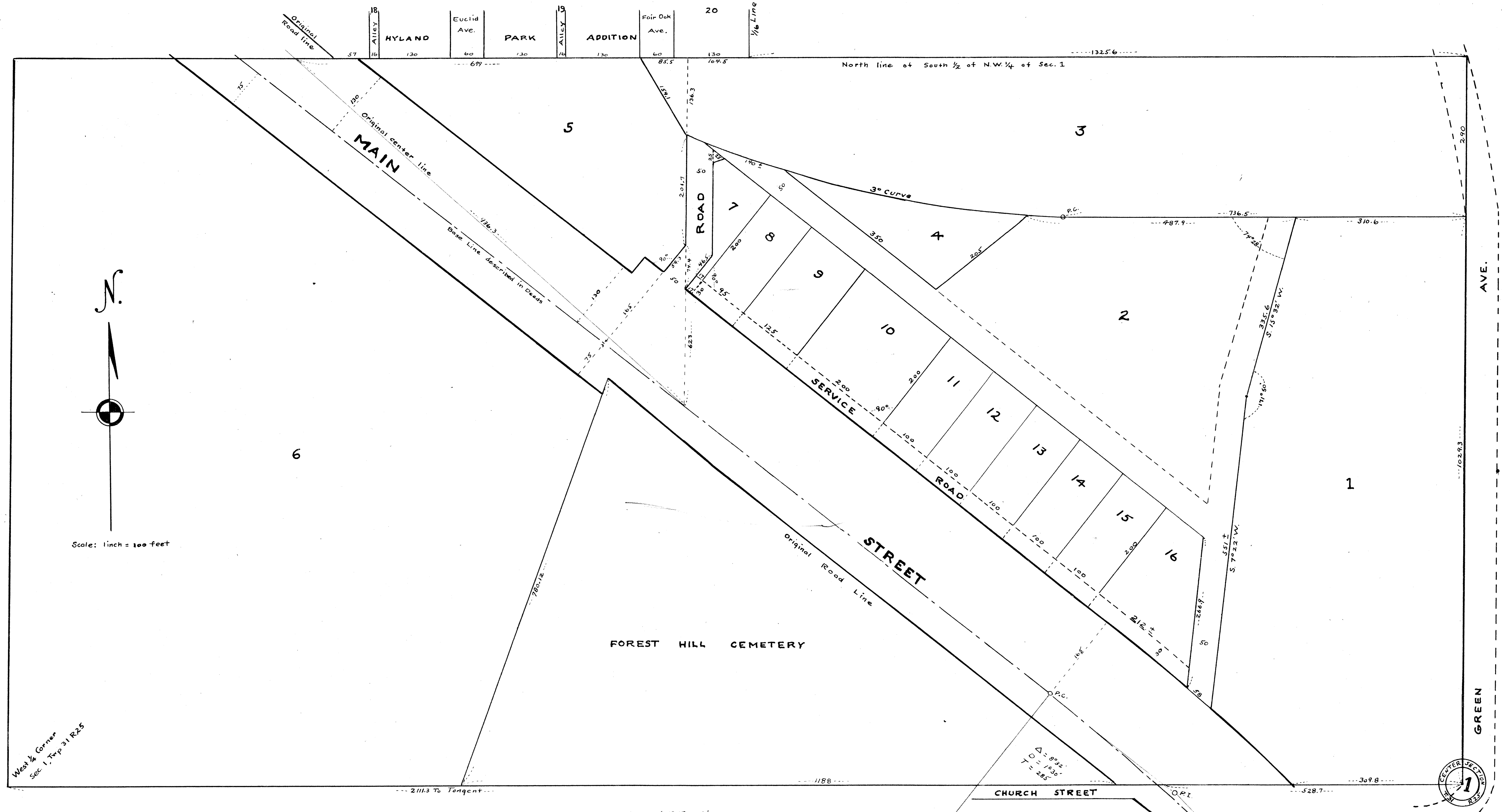


143454

OFFICE OF REGISTER OF DEEDS,
STATE OF MINNESOTA, COUNTY OF ANOKA } ss
I hereby certify that the within instru-
ment was filed in this office for record on
the day of Apr. 7, 1952, A. D., 194-
at 2:30 o'clock P.M., and was duly recorded
in book H of State, page 28
James Rimmer
Register of Deeds

REVISED AUDITORS' SUBDIVISION No. 66



I hereby certify that in accordance with Section 2219 Chapter 11, General Statutes of 1923 and as amended by Chapter 494 Laws of 1947 and in accordance with the order of the County Auditor of Anoka County, Minnesota and made pursuant to the resolution of the Board of County Commissioners for Anoka County, Minnesota, dated the 11 day of Feb, 1952, I have plotted the South one-half (S $\frac{1}{2}$) of Northwest one-quarter (N.W $\frac{1}{4}$) of Section one (1) Township Thirty-one (31) Range Twenty-five (25) now known as Auditor's Subdivision Number Sixty-Six (66); that the plat on this sheet is a correct delineation of said platting and is to be known as REVISED AUDITORS' SUBDIVISION No. 66 and that all distances are shown in feet and decimals of a foot and conform to those stated in the instruments of conveyance.
4-3-52
Dated

P. B. Streetly
Registered Engineer No. 378

I, Kenneth W. Campbell, County Auditor of Anoka County, Minnesota, hereby certify that pursuant to Minnesota Statutes of 1923, Section 2219, Chapter 11 and as amended by Chapter 494 Laws of 1947, I have caused the foregoing plat as described in the foregoing engineer's certificate, to be prepared and the same to be known as REVISED AUDITORS' SUBDIVISION No. 66
4-3-52
Dated
Kenneth W. Campbell
County Auditor, Anoka County, Minnesota
By *P. O. Peterson, Deputy*

