

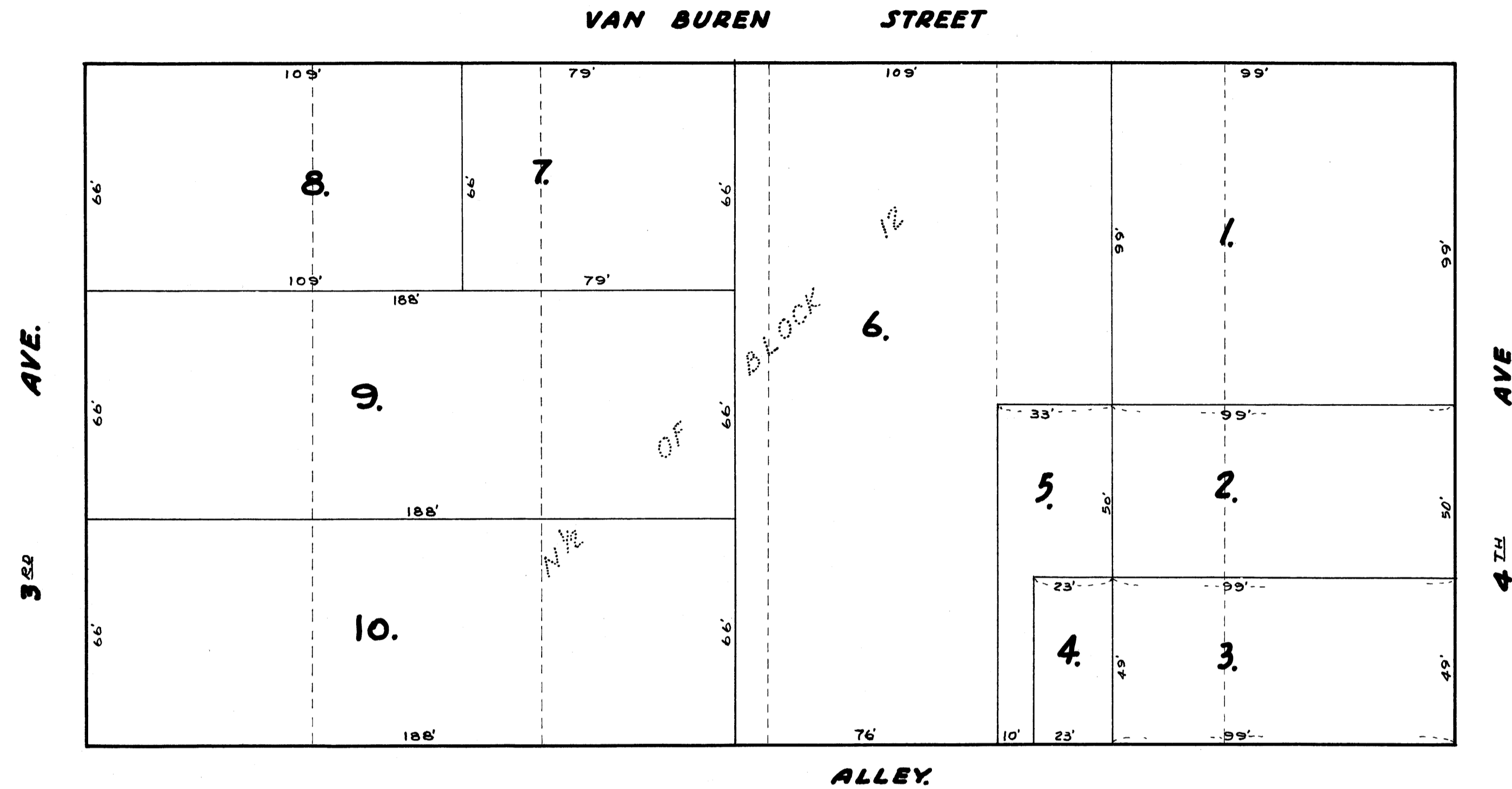
AUDITOR'S SUBDIVISION NUMBER 67.

SCALE 1" = 30'

100185

OFFICE OF REGISTER OF DEEDS,
 STATE OF MINNESOTA, COUNTY OF ANOKA, 1888.
 I hereby certify that the within plat was filed by the Auditor of Anoka County, Minnesota, on the 7th day of November, 1940, at 1:00 p.m. and is recorded in book 2 of Platpage 4.

Eda Brumfield
 Register of Deeds



AND AS AMENDED BY CHAPTER 21 LAWS OF 1935,
 I HEREBY CERTIFY THAT IN ACCORDANCE WITH SECTION 2219 CHAPTER 11 GENERAL STATUTES OF 1923 AND IN ACCORDANCE WITH THE ORDER OF THE COUNTY AUDITOR OF ANOKA COUNTY MINNESOTA I HAVE PLATTED THE FOLLOWING DESCRIBED LAND IN THE COUNTY OF ANOKA AND THE STATE OF MINNESOTA TO WIT: LOTS 1 TO 6 INCL. IN BLOCK 12, BEING THE N 1/2 OF SAID BLOCK 12 IN THE TOWN, NOW CITY OF ANOKA AND RECORDED IN BOOK A OF PLATS PAGE 2, THAT THE PLAT ON THIS SHEET IS A CORRECT DELINEATION OF SAID PLATTING AND TO BE KNOWN AS AUDITOR'S SUBDIVISION NUMBER 67 AND THAT DISTANCES ARE SHOWN IN FEET AND DECIMALS OF A FOOT.

I, E. A. CARLSON COUNTY AUDITOR OF ANOKA COUNTY MINNESOTA, HEREBY CERTIFY THAT I HAVE NOTIFIED THE OWNERS OF THE LAND DESCRIBED IN THE COUNTY SURVEYORS CERTIFICATE TO PLAT THE SAME AND A REASONABLE TIME HAVING ELAPSED SINCE THE SERVICE OF SAID NOTICE AND REQUEST I HAVE CAUSED SAME TO BE PLATTED IN ACCORDANCE WITH SECTION 2219 CHAPTER 11 GENERAL STATUTES OF 1923 AND AS AMENDED BY CHAPTER 21 LAWS OF 1935 AND IN ACCORDANCE WITH THE PLAT ON THIS SHEET AND SAME TO BE KNOWN AS AUDITOR'S SUBDIVISION NUMBER 67.

DATED Nov 7th 1940

Wayne L. Ryge
 COUNTY SURVEYOR
 ANOKA COUNTY MINNESOTA.

DATED Nov 7-1940

E. A. Carlson
 COUNTY AUDITOR
 ANOKA COUNTY MINNESOTA.

ABOVE CERTIFICATE SUBSCRIBED AND SWORN TO BEFORE ME THIS 7th DAY OF November 1940.

John A. Carlson
 CLERK OF DIST. COURT
 ANOKA COUNTY MINNESOTA

ABOVE CERTIFICATE SUBSCRIBED AND SWORN TO BEFORE ME THIS 7th DAY OF November 1940.

John A. Carlson
 CLERK OF DIST. COURT
 ANOKA COUNTY MINNESOTA

