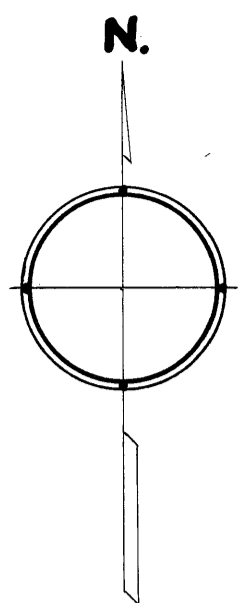


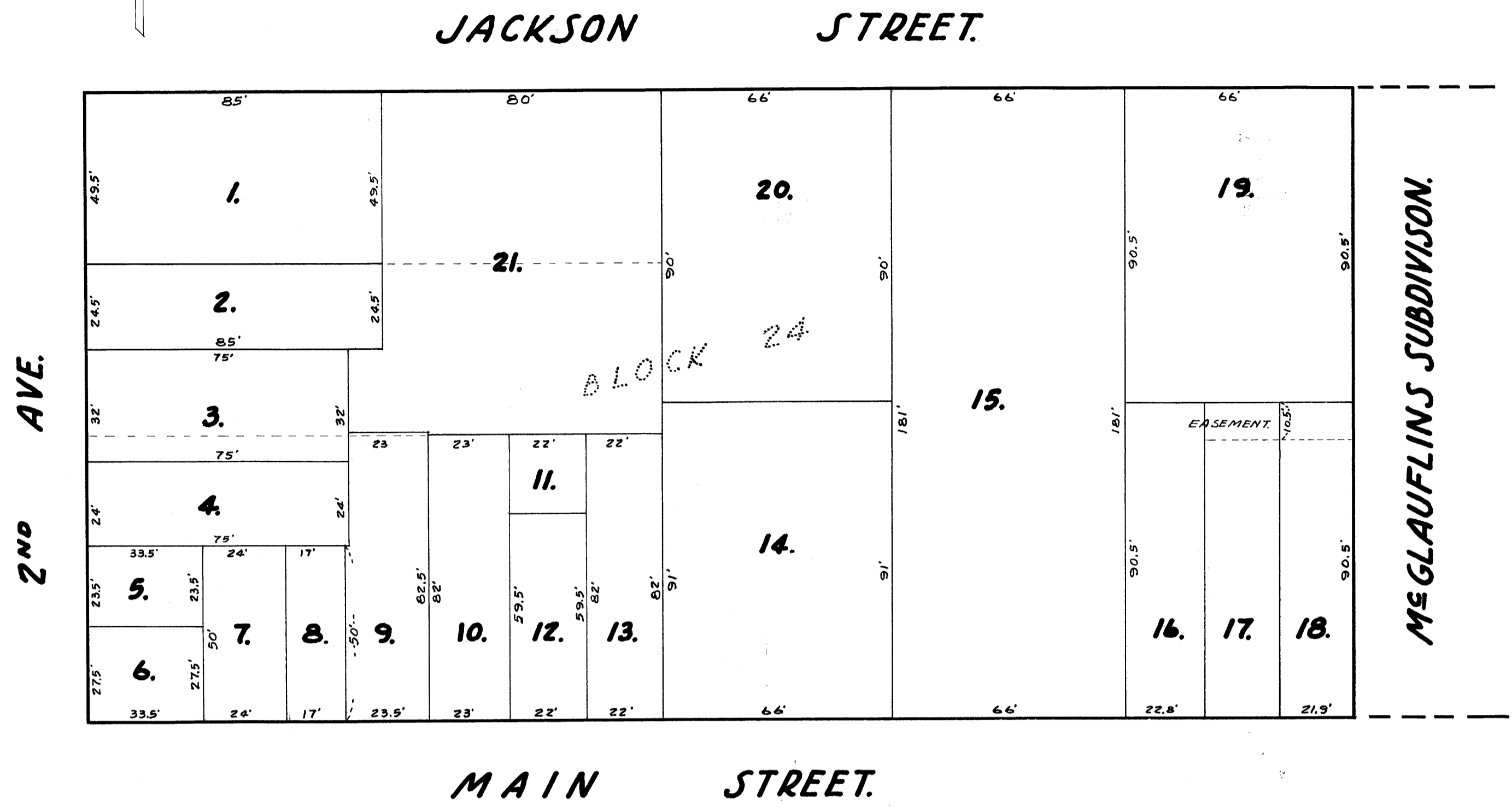
OFFICE OF REGISTER OF DEEDS, 1 SS.  
 STATE OF MINNESOTA, COUNTY OF ANOKA  
 I hereby certify that the following subdivision was filed in the office of the Register of Deeds on the 7th day of November, 1940 at 9 o'clock a.m. and is recorded in book 28 page 6.

*Eva B. ...*  
 Register of Deeds



# AUDITORS SUBDIVISION NUMBER 69.

SCALE 1" = 30'



I HEREBY CERTIFY THAT IN ACCORDANCE WITH SECTION 2219 CHAPTER 11 GENERAL STATUTES OF 1923 AND AS AMENDED BY CHAPTER 21 LAWS OF 1935 AND IN ACCORDANCE WITH THE ORDER OF THE COUNTY AUDITOR OF ANOKA COUNTY MINNESOTA I HAVE PLATTED THE FOLLOWING DESCRIBED LAND IN THE COUNTY OF ANOKA AND THE STATE OF MINNESOTA TO WIT; BLOCK 24 TOWN, NOW CITY OF ANOKA AS RECORDED IN BOOK 2 OF PLATS PAGE 2, EXCEPT THE LAND PREVIOUSLY PLATTED AS McGLAUFLINS SUBDIVISION OF LOTS 1 AND 2 IN SAID BLOCK 24, THAT THE PLAT ON THIS SHEET IS A CORRECT DELINEATION OF SAID PLATTING AND TO BE KNOWN AS AUDITORS SUBDIVISION NUMBER 69 AND THAT DISTANCES ARE SHOWN IN FEET AND DECIMALS OF A FOOT.

DATED Nov. 7<sup>th</sup> 1940

*Wayne S. ...*  
 COUNTY SURVEYOR  
 ANOKA COUNTY MINNESOTA.

I, E.A. CARLSON COUNTY AUDITOR OF ANOKA COUNTY MINNESOTA, HEREBY CERTIFY THAT I HAVE NOTIFIED THE OWNERS OF THE LAND DESCRIBED IN THE FOREGOING COUNTY SURVEYORS CERTIFICATE TO PLAT THE SAME AND A REASONABLE TIME HAVING ELAPSED SINCE THE SERVICE OF SAID NOTICE AND REQUEST I HAVE CAUSED SAME TO BE PLATTED IN ACCORDANCE WITH SECTION 2219 CHAPTER 11 GENERAL STATUTES OF 1923 AND AS AMENDED BY CHAPTER 21 LAWS OF 1935 AND IN ACCORDANCE WITH THE PLAT ON THIS SHEET, AND SAME TO BE KNOWN AS AUDITORS SUBDIVISION NUMBER 69.

DATED Nov 7-1940

*E.A. Carlson*  
 COUNTY AUDITOR  
 ANOKA COUNTY MINNESOTA.

ABOVE CERTIFICATE SUBSCRIBED AND SWORN TO BEFORE ME THIS 17<sup>th</sup> DAY OF November, 1940.

*Thos. A. Nelson*  
 CLERK OF DIST. COURT  
 ANOKA COUNTY, MINNESOTA.

ABOVE CERTIFICATE SUBSCRIBED AND SWORN TO BEFORE ME THIS 7<sup>th</sup> DAY OF November, 1940.

*Thos. A. Nelson*  
 CLERK OF DIST. COURT  
 ANOKA COUNTY, MINNESOTA.