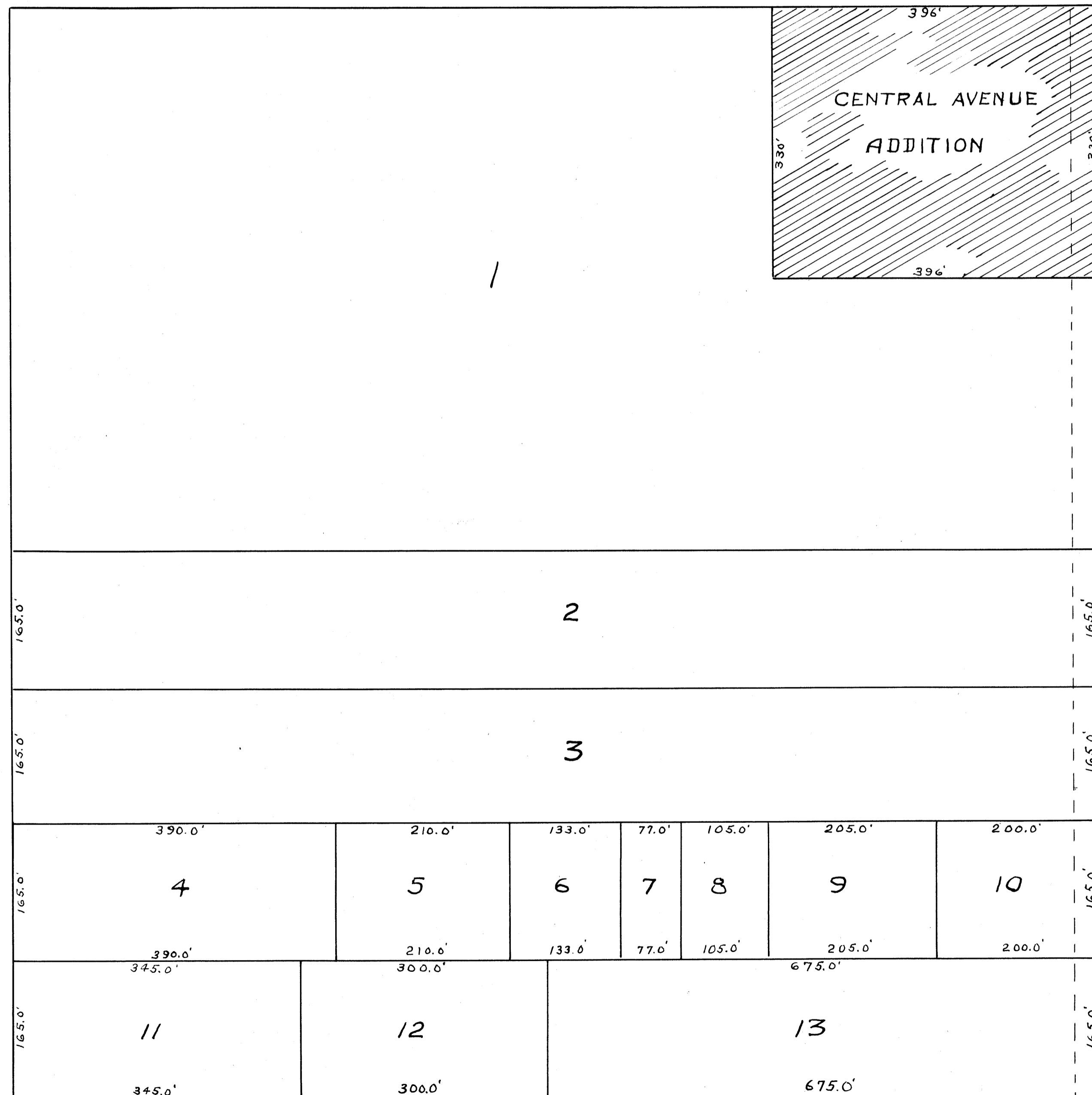


AUDITOR'S SUBDIVISION No. 89

SCALE 1" = 100'

OFFICE OF REGISTER OF DEEDS,
STATE OF MINNESOTA, COUNTY OF ANOKA
I hereby certify that the within instru-
ment was filed in this office for record on
the 01st day of October, A. D. 1949
at 4 o'clock P.M., and was duly recorded
in book of Plats page 86

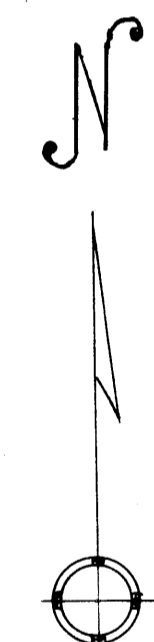
Eve Bransell
Register of Deeds
By *Harlem Carlson*
Deputy



I hereby certify that in accordance with Section 2219, Chapter 11, General Statutes of 1923 and as amended by Chapter 494 Laws of 1947 and in accordance with the order of the County Auditor of Anoka County, Minnesota made pursuant to the resolution of the Board of County Commissioners for Anoka County, Minnesota dated the 11th day of October 1948, I have platted the following described land in Anoka County, Minnesota to-wit:- the Northeast 1/4 of the Southwest 1/4 of Section 12, Township 30, Range 24 except that part platted and known as Central Avenue Addition. That the Plat on this sheet is a correct delineation of said platting and is to be known as AUDITOR'S SUBDIVISION No. 89 and distances are shown in feet and decimals of a foot and the measurements and divisions shown hereon conform to those stated in the instruments of conveyance.

October 4-1949
Dated

R.H. Sturtis
Registered Engineer No. 378



I E.A. Carlson, County Auditor of Anoka County, Minnesota hereby certify that pursuant to Minnesota Statutes of 1923 Chapter 11 and as amended by Chapter 494, laws of 1947, I have caused the foregoing plat, as described in the Engineers certificate, to be prepared and and the same to be known as AUDITOR'S SUBDIVISION No. 89.

October 4, 1949
Dated

E.A. Carlson
County Auditor Anoka County Minn.
By *J. Hanstad* Deputy